

# Installing the 2012 Driver Station software on a non-Classmate PC

---

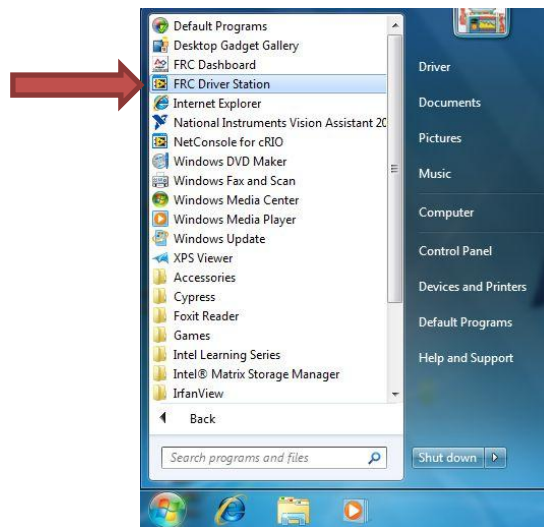
This document describes the installation and setup process to use the 2012 Driver Station software on a non-Classmate PC.

## Prerequisites:

1. A non-Classmate PC running Windows XP or Windows 7. **NOTE:** The 2012 Driver Station software has only been tested on the Windows XP and Windows 7 operating systems. Installing the 2012 DS software on other Windows-based operating systems (such as Windows Vista) may work, but could result in unexpected behavior.
2. A user account with Administrator privileges
3. The 2012 National Instruments LabVIEW installation USB key that was included in the 2012 Kit of Parts
4. The FRC 2012 Utilities Update (25 MB) found at: <http://joule.ni.com/nidu/cds/view/p/id/2262/>
5. The 2012 FRC Driver Station installer (51 MB) found at <http://joule.ni.com/nidu/cds/view/p/id/2263>
6. A robot running the v43 cRIO image
7. Deployed code running on the robot.
8. Confirm that the robot and Classmate PC connect via tether and that the robot can be driven when enabled.

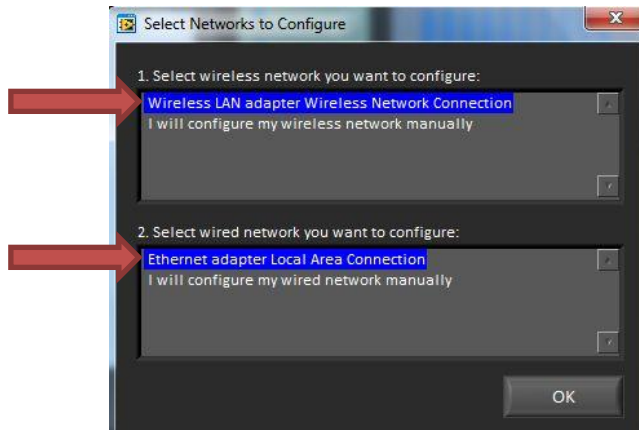
## Installation Procedure:

1. Turn on your computer and login to a user account with Administrator privileges.
2. Install the FRC 2012 Tools & CompactRIO Drivers from the LabVIEW USB key included in the 2012 Kit of Parts. If the computer will only be used to run the 2012 Driver Station and Dashboard programs, select the “Install only Driver Station Support” option.
3. If you elected to install the complete LabVIEW development environment along with the FRC Tools in the previous step, install the latest LabVIEW update now:  
<http://joule.ni.com/nidu/cds/view/p/id/2261>
4. Install the 2012 FRC Utilities Update
5. Install the 2012 FRC Driver Station
6. Execute the FRC Driver Station software from the Start menu



7. If prompted by Windows Firewall to add exceptions for the Driver Station software, Dashboard program, and NI Vision Remote Server; choose YES.
8. Go to the Setup tab and select “Choose NIC...”.

9. Select how the Driver Station software should manage your network connections. The default options allow the Driver Station software to set the connections automatically.



10. Enter your Team Number and press Enter.
11. Your computer is now setup to run the 2012 FRC Driver Station. Connect to the robot via tether cable and confirm that the Driver Station links correctly with the robot.

### Usage Notes:

1. The 2012 FRC Driver Station **does not** require a user login named "Driver" to link to the Field Management System (FMS).
2. The USB Stop button is no longer required for the Driver Station to operate and will **not work** as an emergency stop. Instead the E-Stop has been assigned to the Spacebar key, the Disable key has been remapped to Enter/Return.
3. Pressing the Exit button on the Setup tab will close the Driver Station software. If the user account is named "Driver" it will also log out of the account.