

2014 Yellow Tote



Previous Season KOP Tote (2013)





Previous Season KOP Tote (2010?)

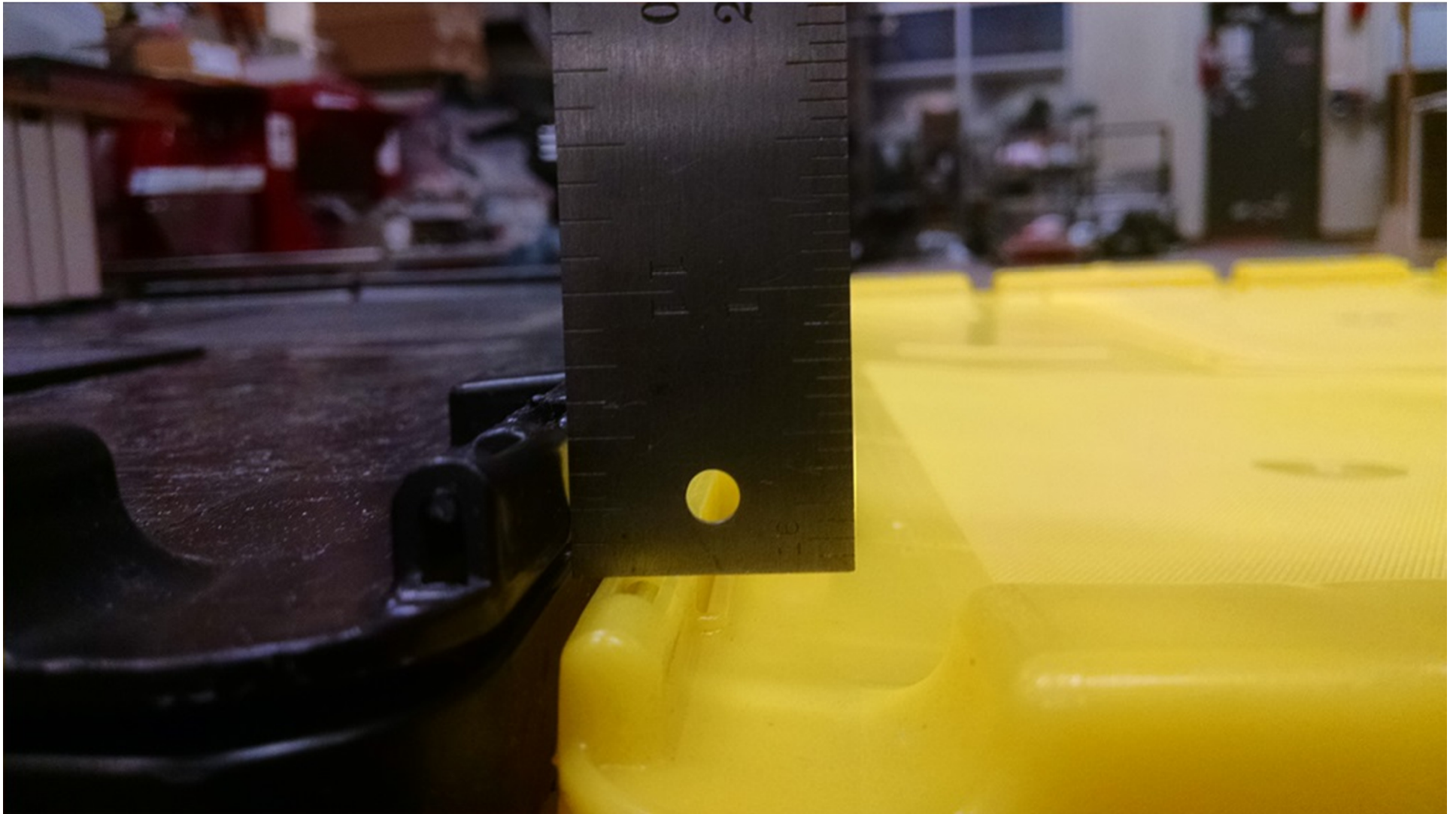


Yellow Tote: 26.9" long, 16.9" wide, 12.1" tall, 7.8 lbs

Black Tote: 26  $\frac{3}{4}$ " long, 17  $\frac{1}{16}$ " wide, 12  $\frac{5}{8}$ " tall, 8.0 lbs

Blue Tote: 27  $\frac{1}{8}$ " long, 16  $\frac{9}{16}$ " wide, 12  $\frac{7}{16}$ " tall, 7.8 lbs

Height difference between yellow and black tote.

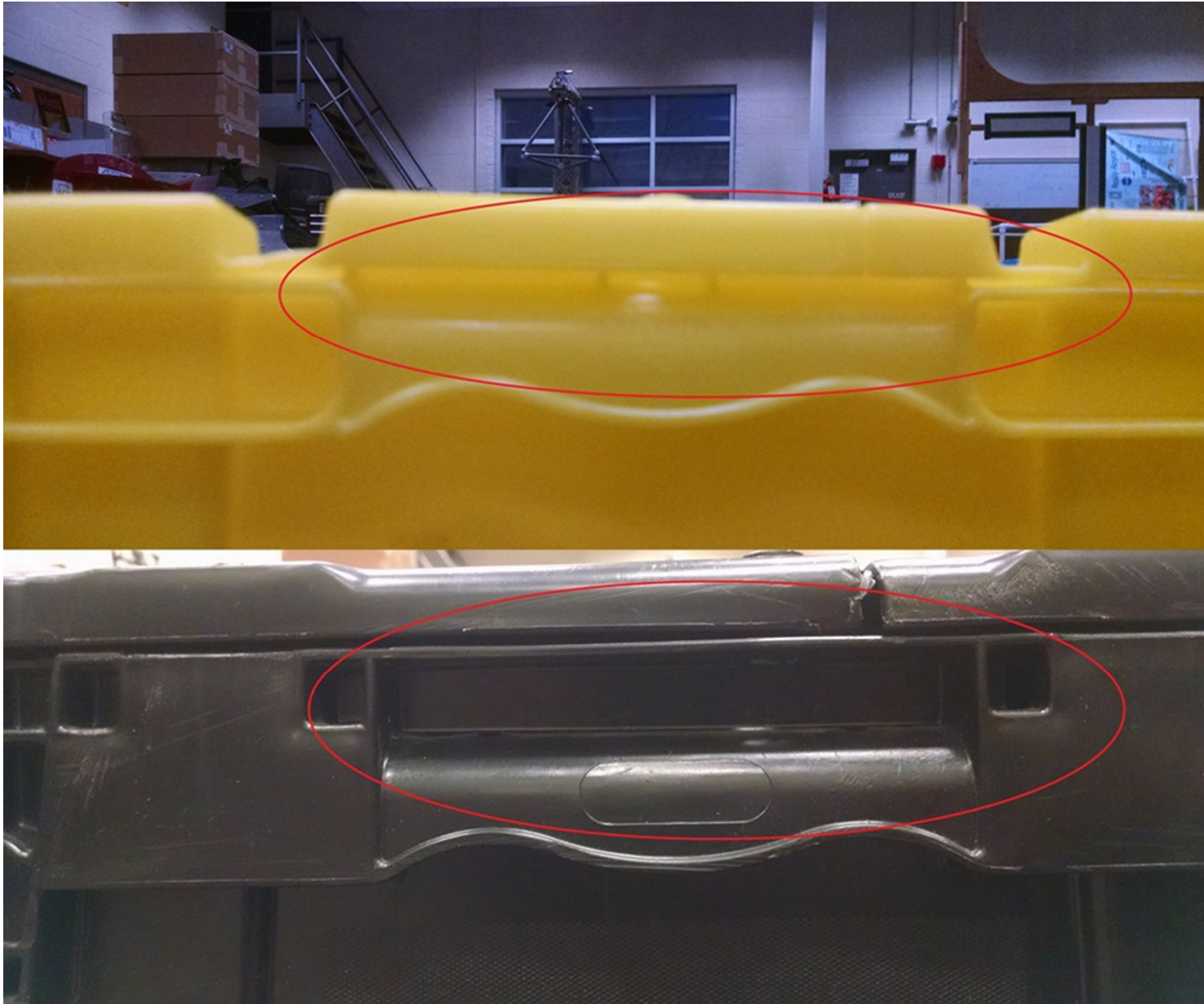




Height difference between blue and yellow totes



Difference in handle location on yellow and black totes. The yellow tote handle is  $\frac{1}{8}$ " higher than the black tote handle.



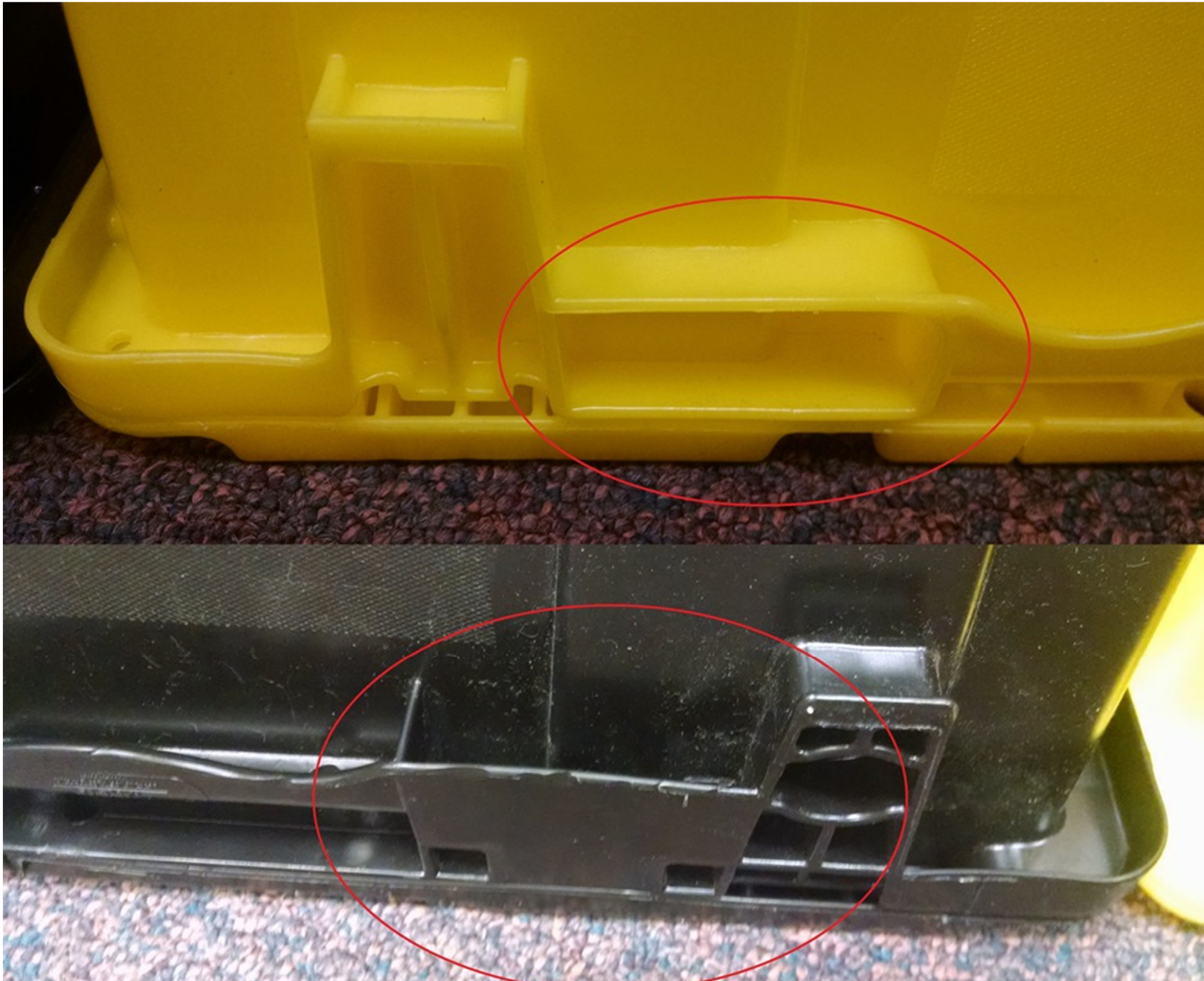


Blue tote handle profile. Also note wider trapezoid shapes on ends.





The black tote has a void under the feature next to the handle. The yellow tote does not.



The ribs on the black tote are twice as long as the ribs on the yellow tote. The blue tote has long ribs but only has 4 , whereas the others have 5.

