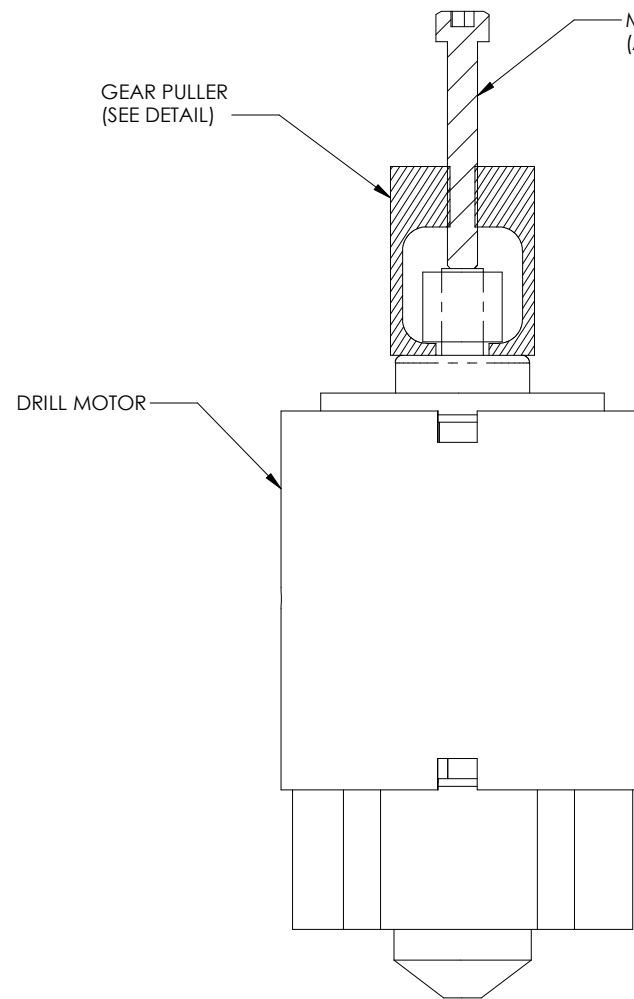
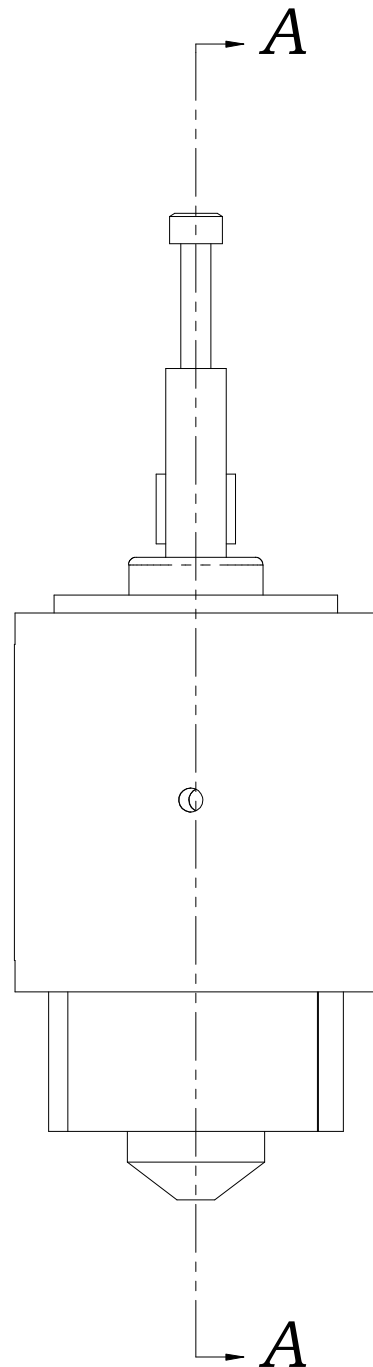
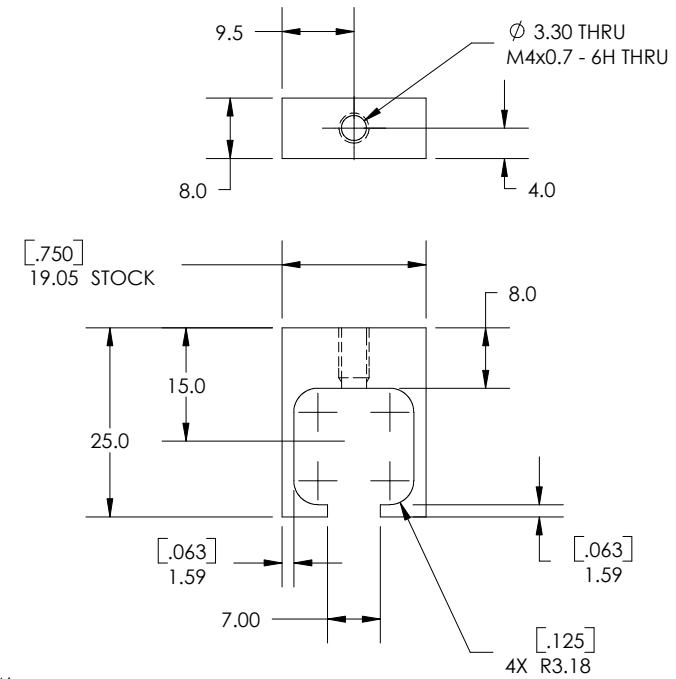
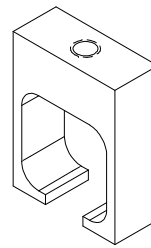


1. ATTACH GEAR PULLER AS SHOWN.
2. TIGHTEN M4 SCREW UNTIL GEAR COMES OFF.



SECTION A-A

MATERIAL: AISI 1018 STEEL	
HEAT TREAT:	
CASE DEPTH:	
HARDNESS:	
SURF TREAT:	
OTHER	

ECN	REV	ZONE	CHANGE	DATE	BY
E####	A		RELEASED	XX/XX/01	XX

FOR FEATURES - OF - SIZE PERFECT, STRAIGHTNESS NOT REQUIRED AT MMC.
FOR DIAMETRAL FEATURES, ROUNDNESS MUST BE WITHIN THE MMC AND LMC BOUNDARY.
TRUE POSITION TOLERANCES AND RELATED DATUMS (EXCEPT PLANE SURFACES), APPLY AT MMC.
OTHER GEOMETRIC TOLERANCES AND RELATED DATUMS, APPLY RFS.
SEPARATE TRUE POSITION CALLOUTS MAY BE GAGED SEPARATELY, REGARDLESS OF DATUM REFERENCE.

METRIC

UNLESS OTHERWISE SPECIFIED

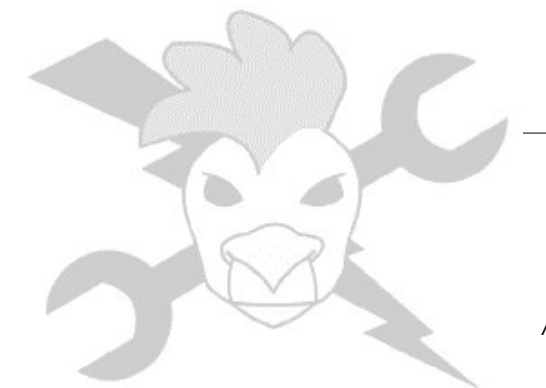
ALL DIMENSIONS ARE IN MILLIMETERS.
ALL ONE PLACE DECIMAL DIMENSIONS ± 0.2 .
ALL TWO PLACE DECIMAL DIMENSIONS ± 0.10 .
ALL THREE PLACE DECIMAL DIMENSIONS ± 0.012 .
ALL MACHINED ANGLES $\pm 0.15^\circ$.
CSINK ALL TAPPED HOLES.
REMOVE ALL BURRS AND SHARP CORNERS.
UNFINISHED CASTING AND WELDMENT DIMENSIONS ± 3.0 .
BURNOUT DIMENSIONS ± 3.0 .
DO NOT USE REF. DIMENSIONS FOR MANUFACTURING.
DIMENSIONS IN [X.X] ARE IN INCHES.
FOLLOW FANUC ROBOTICS ENGINEERING STANDARDS.

PART IDENTIFICATION, PRESERVATION, LABELING, AND PACKAGING SHALL BE IN ACCORDANCE WITH FANUC ROBOTICS SUPPLIER QUALITY ASSURANCE DOCUMENTS.

THIS MATERIAL IS THE EXCLUSIVE PROPERTY OF FANUC ROBOTICS, AND MUST BE RETURNED TO FANUC ROBOTICS IMMEDIATELY UPON REQUEST.
THIS MATERIAL AND THE INFORMATION ILLUSTRATED OR CONTAINED HEREIN MAY NOT BE REPRODUCED, COPIED, USED OR TRANSMITTED IN WHOLE OR PART IN ANY WAY WITHOUT THE PRIOR WRITTEN CONSENT OF FANUC ROBOTICS.

THUNDERCHICKENS

TEAM #217 - UTICA COMMUNITY SCHOOLS
FORD MOTOR CO. / TRW / FANUC ROBOTICS / VISTEON



TITLE: DRILL GEAR PULLER	
DRAWN BY: P. COPIOLI	DATE: 1/30/04
CHECKED BY:	DATE:
APPR'D BY:	DATE:
SHEET SIZE: B	SCALE: FULL
SHEET NO. 1	TOTAL SHEETS 1
DRAWING PART NO./PART NO. TC-2004-700-001	