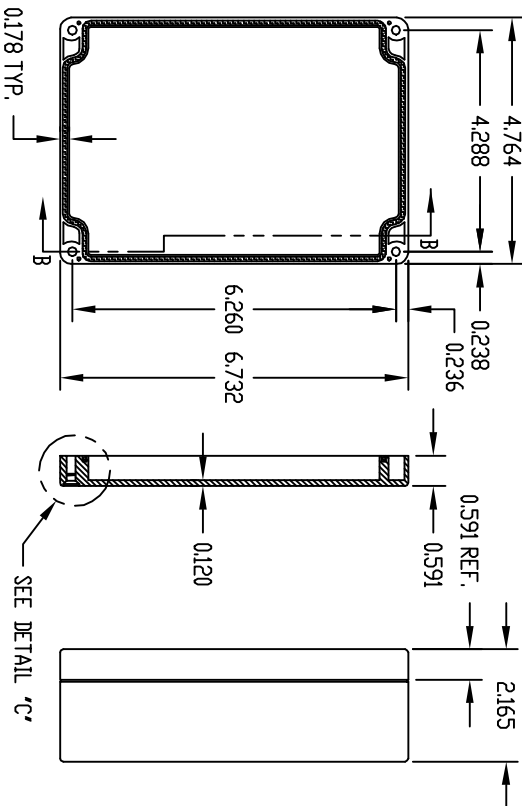
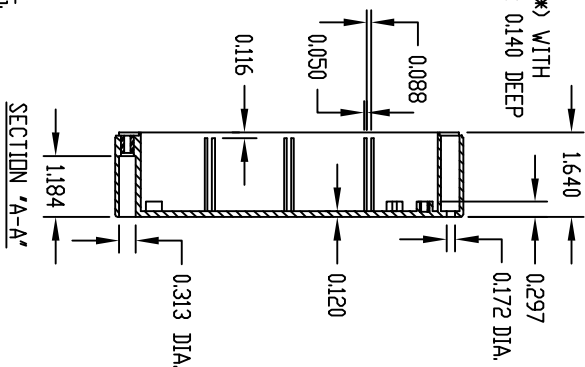
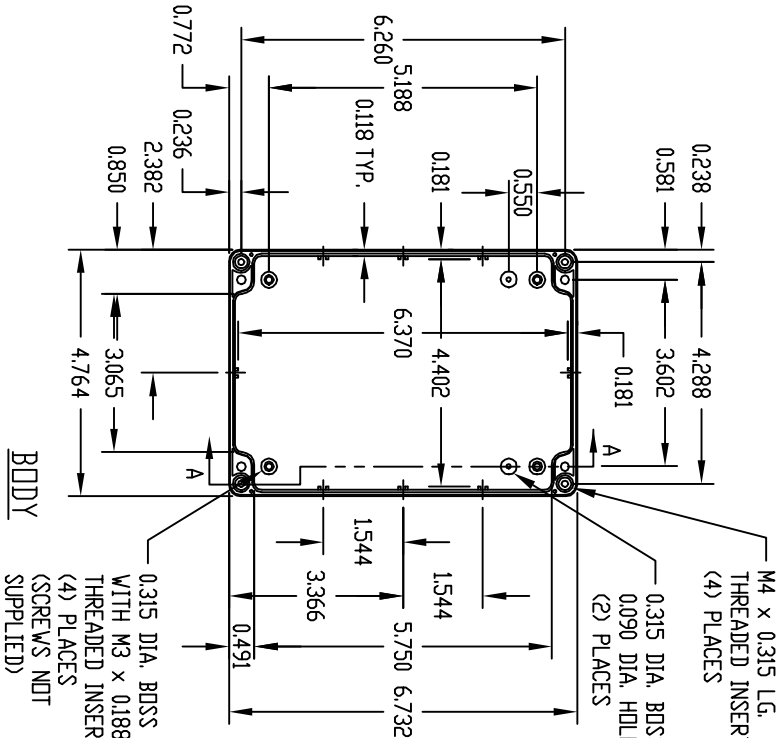


PART NAME NEMA 4X ENCLOSURE

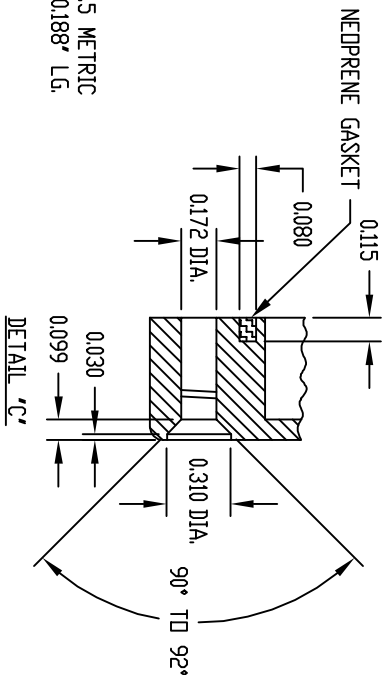
PART No.

PN-1324, PN-1324-C AND PN-1324-DG

INDUSTRY STANDARDS:
POLYCARBONATE (LIGHT GRAY AND CLEAR)
UL 94V-2 FLAMMABILITY RATING
(UL FILE #E41613)
UV STABILIZED
SERVICE TEMPERATURE RANGE:
-40°C TD +120°C
ABS (DARK GRAY)
UL 94-HB FLAMMABILITY RATING
(UL FILE #E56070)
SERVICE TEMPERATURE RANGE:
-40°C TD +80°C



(*) MOUNTING BUSES USE EITHER M2.5 METRIC DR #4 STD. SHEET METAL SCREWS x 0.188" LG. (NOT SUPPLIED)



NOTE: ALL DIMENSIONS HAVE ±0.015 TOLERANCE UNLESS OTHERWISE SPECIFIED.

PART NUMBER	MATERIAL	FINISH	HARDWARE
PN-1324	POLYCARBONATE	LIGHT GRAY	KIT CONTAINS (4) M4 x 20mm (0.787") LG. SCREWS FOR ASSEMBLY
PN-1324-C	POLYCARBONATE	LIGHT GRAY	
PN-1324-DG	HIGH-IMPACT ABS	DARK GRAY	