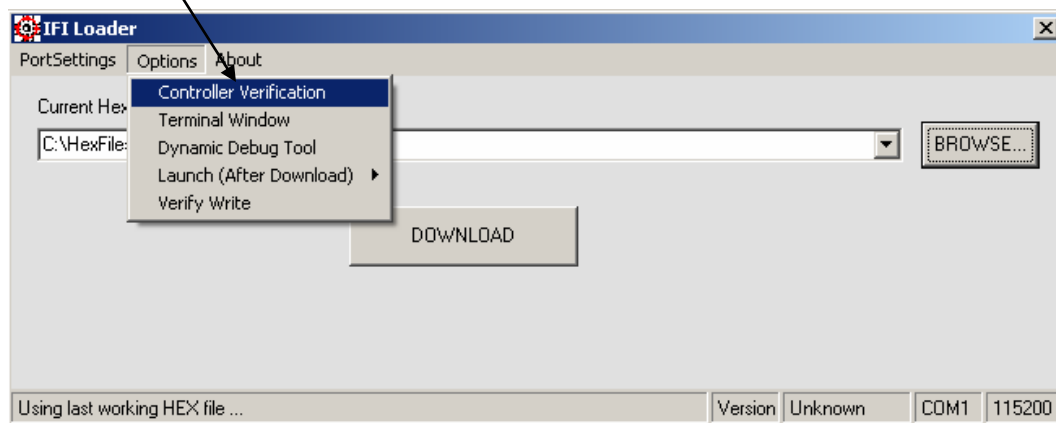
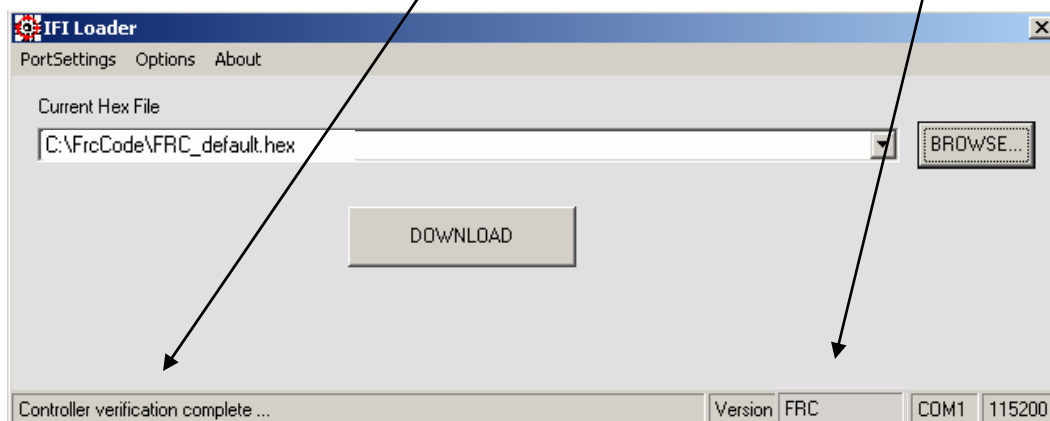


The following process is how to update firmware in the Master processor.

The **1st Step** is to make sure that the robot controller has been verified. Make sure a serial cable has been attached from the PC to the programming port of the RC. Since the IFI Loader supports other robot controllers, the verification process allows the Loader to select the appropriate protocol used during downloading.
To do this click here. (This only needs to be done once).

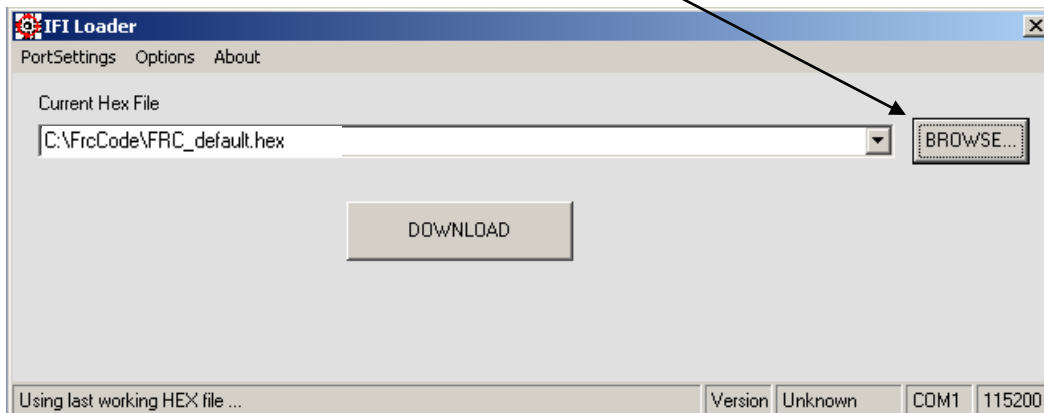


Now you should see 'Controller verification complete ...' on the lower left and 'FRC' in the lower right of the status window.

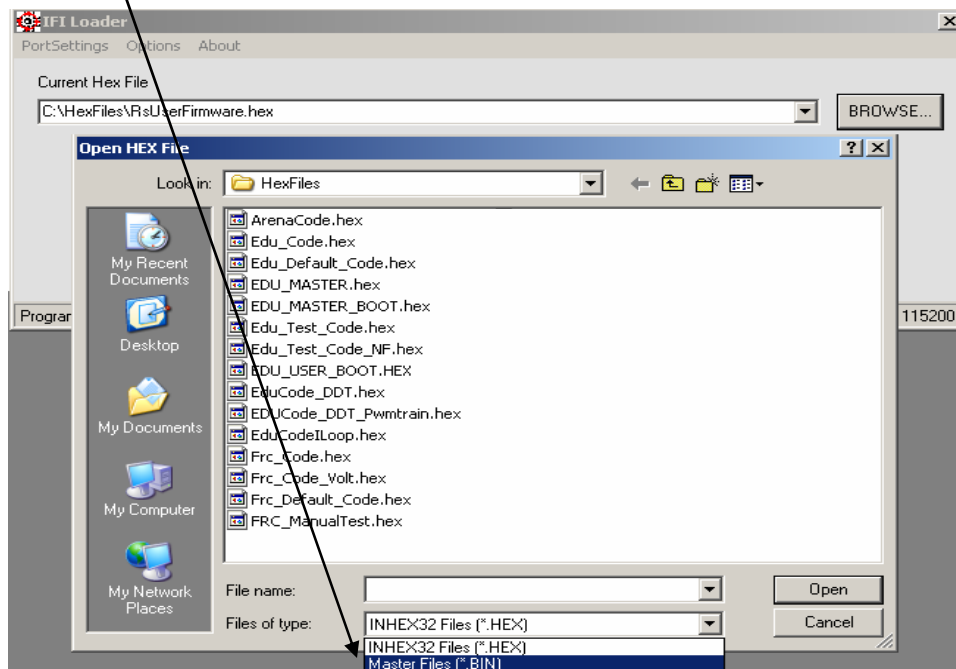


The **2nd Step** is to attach the **TETHER** cable between the **OI** and the **RC** (make sure your team number is properly set before the connection is made). Once a link is established, hold the 'Prog' button (on the RC) down until the 'Program State' LED is solid orange.

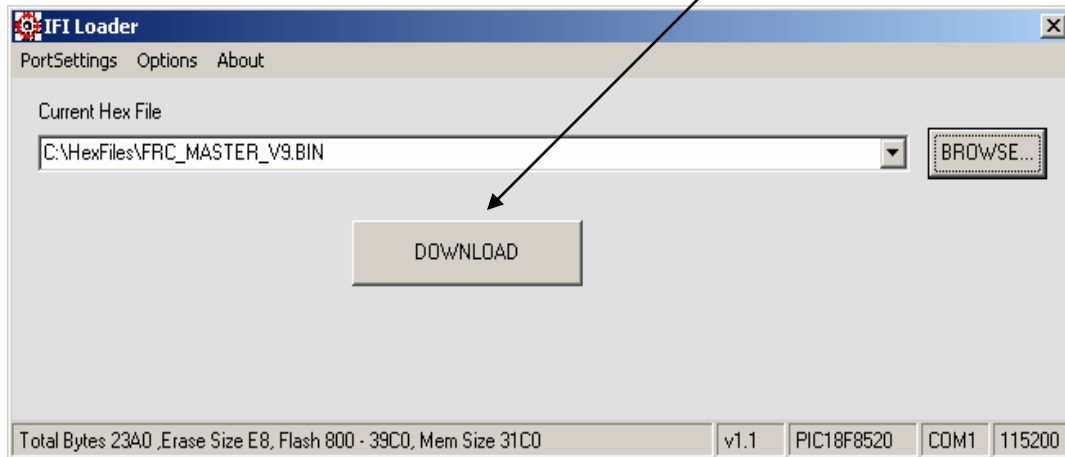
In order to download a BIN file, click on the BROWSE button.



Next, select "Master Files (*.BIN)" in the combo box.



Once the appropriate BIN file has been selected, click on the DOWNLOAD button.



The **3rd Step** is to download the user code. Once the master firmware has been updated, the user code **must be reloaded**. In order to do this, repeat **Step 2**. Rather than selecting 'Master Files (*.BIN)', you must select the 'INHEX32 Files (*.HEX)' option. After downloading the appropriate user code (file), the robot controller is ready for use.