

Northern California Robot Games 2007

Parking & Loading/Unloading Info Page 1

Direction to Woodside High School:

Address:

Woodside High School
199 Churchill Avenue
Woodside, Ca 94062
(650) 367-9750

Direction:

From HWY 280, take the Woodside Road exit. Take Woodside Road (going toward Redwood City/Atherton), for 0.8 mile, you will reach Churchill Ave. If you want to reach the **Main Parking Lot**, go past football field and turn left.

From US-101 N, take exit 408 to merge onto Woodside Rd. Continue for 3.8 miles, you will reach Churchill Ave.

From US-101 S, take exit 408 for Woodside Rd/CA-84 W. Continue for 3.2 miles, you will reach Churchill Ave.

Friday evening parking:

There is a football game at Woodside HS Friday night. **Therefore the Main Parking Lot will be unavailable to CalGames teams and volunteers. The only available parking is Staff Parking.** You can reach that side of campus by taking Alameda de Las Pulgas on Woodside Road (turn left if you are coming from 101, turn right if you are coming from 280), and go through the side entrance by the tennis courts. You may drop off your robot and supplies **here**, and park your vehicle as soon as you are done unloading. Pit Area will be opened at 4:00pm on Friday for participating teams.

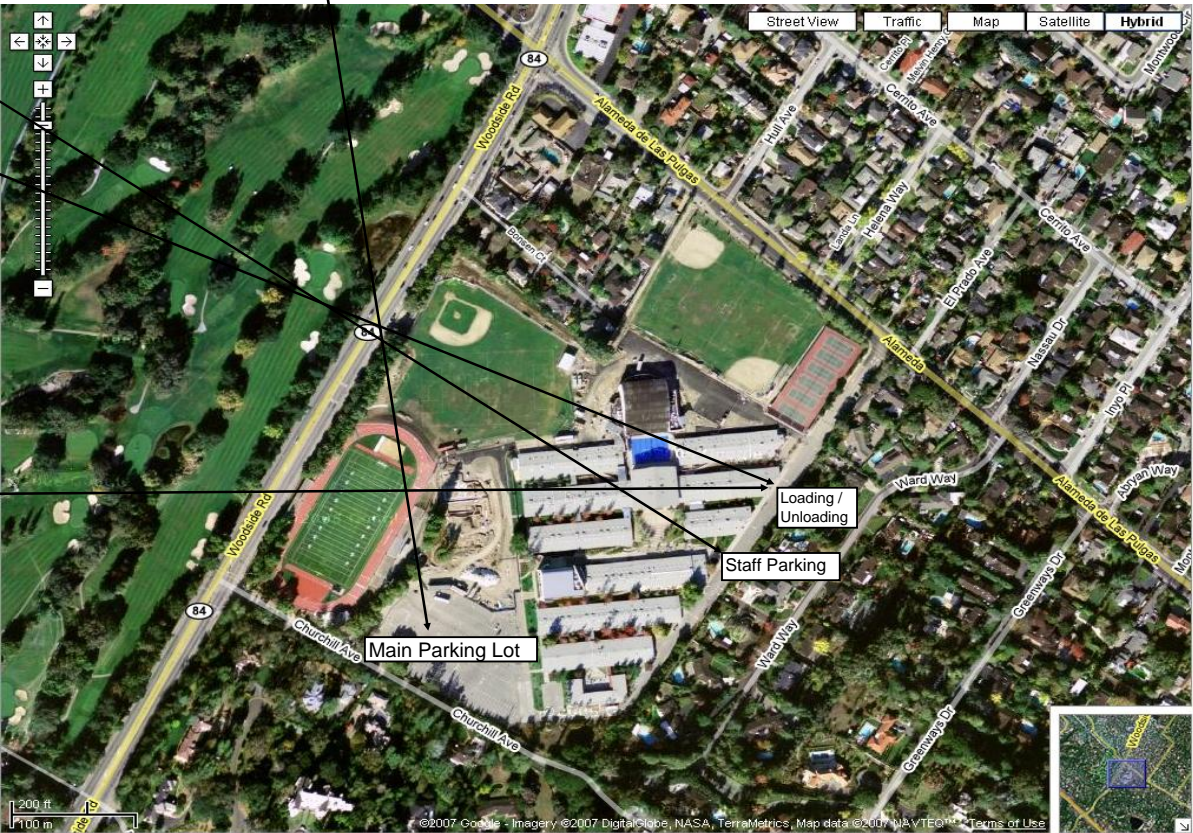
Saturday parking (all day):

You will still be able to drop off your robot and supplies Saturday morning, and park in **Staff Parking**. However, the rest of your team should park in the **Main Parking Lot**. The **Main Parking Lot** will be available to teams and volunteers all day Saturday. Pit Area will be opened to teams as early as 7:00am Saturday. The event will be over around 5:00pm. We plan to finish tear down/clean up around 8:00pm.

Loading/Unloading Info:

If you are unloading the robot, tools, and supplies for your team, make sure you enter the **Staff Parking** by taking Alameda de Las Pulgas and go through the side entrance by the tennis courts. You can unload **here**, then proceed directly to the pit area. You need to clear the loading area as soon as possible for other teams arriving after you.

After the event is over, you may bring your car to the same spot for loading. Quickly finish loading everything on your vehicle, so other teams can do the same. Remember, we have 30 teams this year, so it will get congested really quickly.



See Next Page for a clearer picture of the Woodside HS campus.