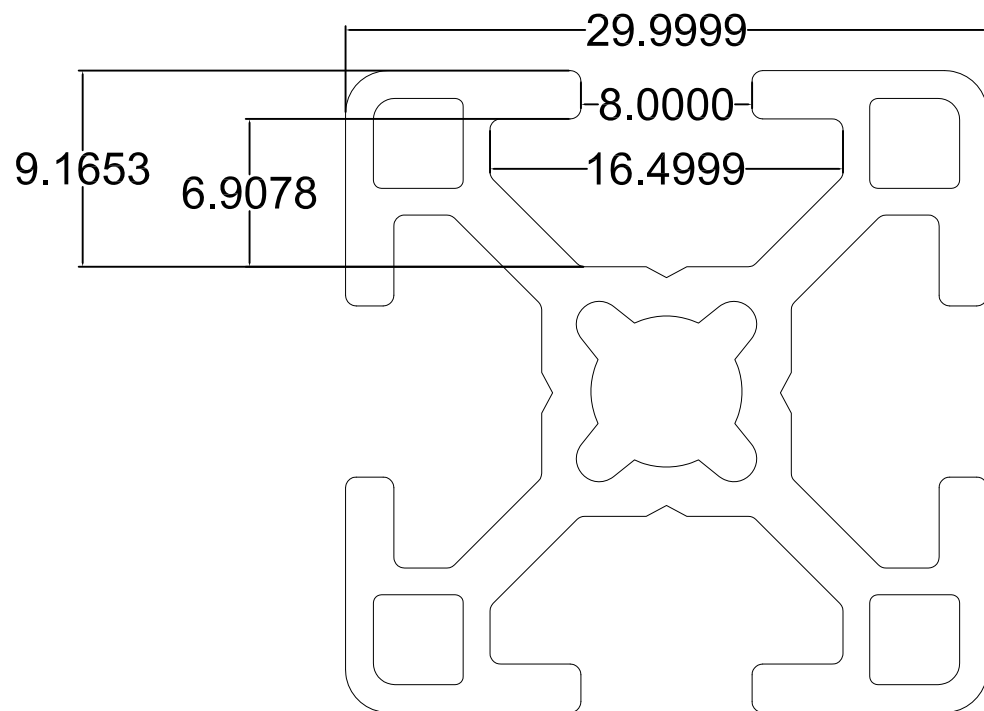
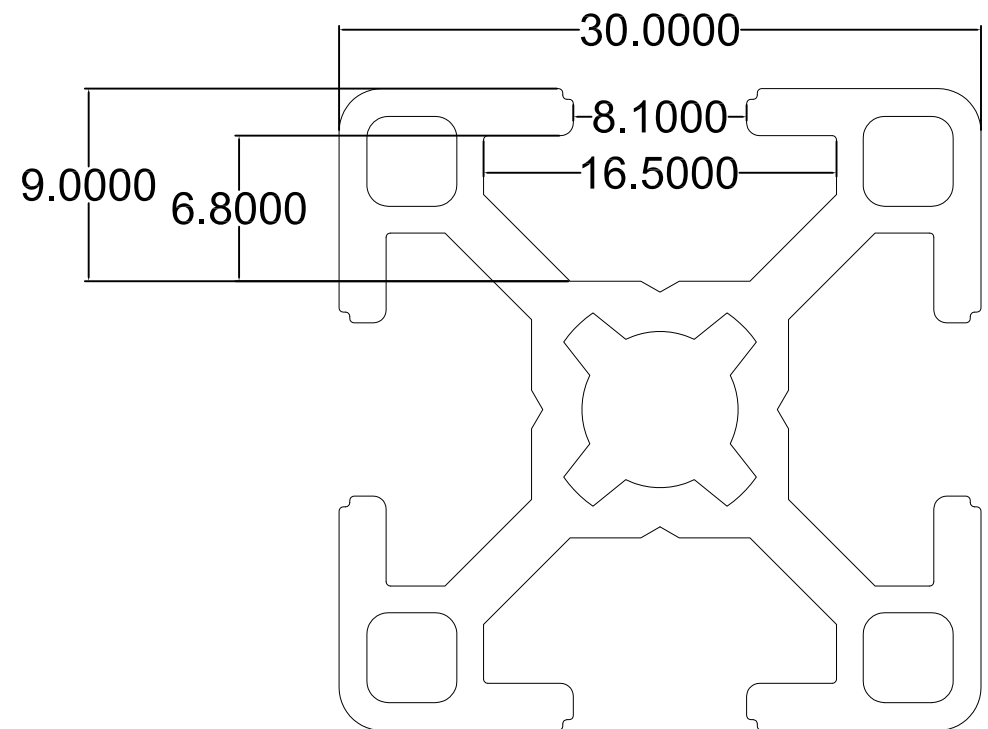


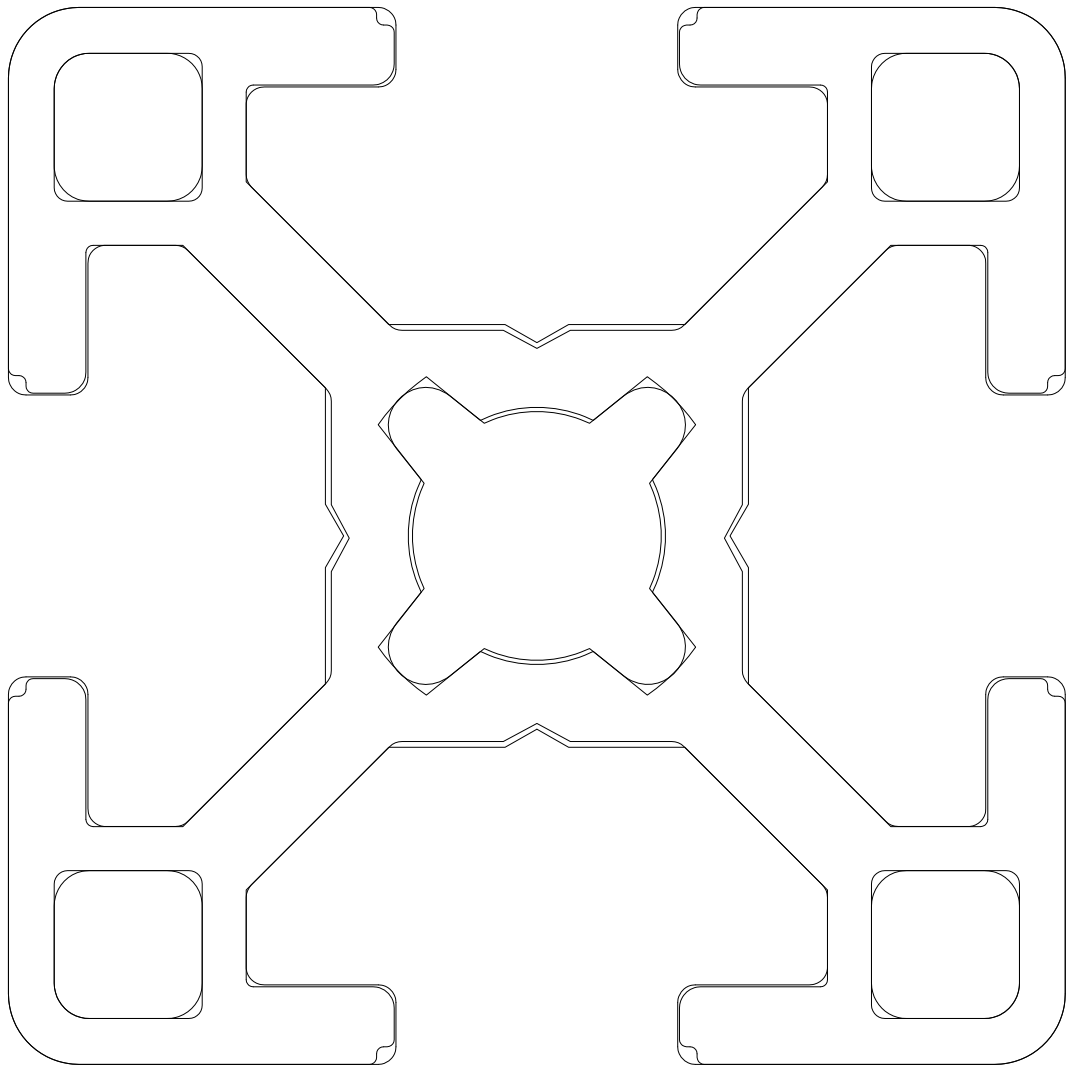
8020



Bosch



8020/Bosch Overlap



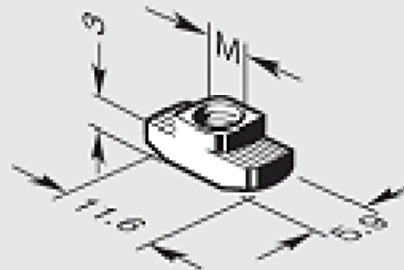
Aluminum Structural Framing

T-Nuts

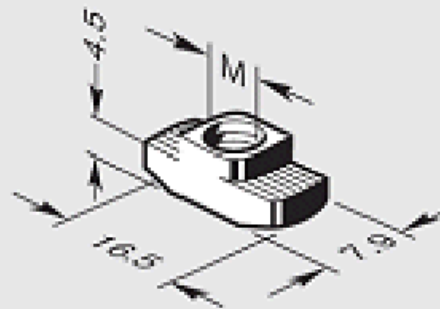


 Log in for **Pricing & Ordering**

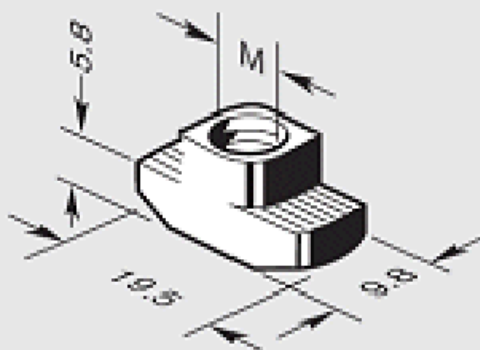
6mm T-Nut



8mm T-Nut



10mm T-Nut



Features:

- Inserts anywhere along the profiles's T-slot and rotates into position
- Grooves "bite" into profile to lock the T-nut into position, and provide ESD protection and resistance to vibration
- Large contact surface improves gripping strength
- Tapered neck simplifies assembly; T-nut is self-aligning in the T-slot

Material

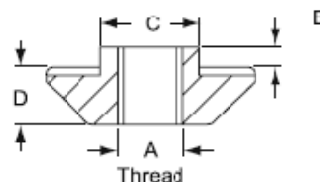
- Zinc-plated 8.8 steel (except as noted below)

80/20® Inc.

The Industrial Erector Set®

Drop-In T-Nut Steel/Stainless Steel

- Loads by dropping into the T-slot, rotating and engaging in the slot
- Penetrates the anodized coating, ensuring a safe, conductive connection
- See Compatibility Code below for profile compatibility



Part No.	Material	A	B	C	D	E	Gram (Lbs.)	Compatibility Code
14162	Steel	10-32	11.50	5.70	3.20	1.00	1.20 (.003)	6-10, 6-25
14164		M4					1.20 (.003)	
14166	Stainless Steel	M4					1.20 (.003)	
13118	Stainless Steel	M6					3.20 (.007)	
13111		1/4-20					3.00 (.006)	
13113	Zinc Plated Steel	M4	16.00	7.70	4.50	1.50	3.80 (.008)	8-30
13115		M5					3.10 (.007)	
13117		M6					3.00 (.007)	
13112		10-32					3.00 (.007)	
13110		1/4-20					3.10 (.007)	
13114	Zinc Plated Steel	M4	16.00	7.70	4.50	3.00	4.50 (.010)	8-15 8-40
13116		M5					3.50 (.008)	
13119		M6					3.30 (.007)	
14165		1/4-20					3.30 (.007)	
13123	Zinc Plated Steel	M4	19.00	9.70	5.80	3.00	7.90 (.017)	10-45
13127		M5					7.70 (.017)	
13129		M6					7.20 (.016)	
13132		M8					5.70 (.013)	
13122		10-32					7.60 (.017)	
13120		1/4-20					6.80 (.015)	
13124		5/16-18					5.80 (.013)	
13130	Stainless Steel	M6					7.30 (.016)	
13133		M8					6.10 (.013)	
13121		1/4-20					7.30 (.016)	
13125		5/16-18					6.20 (.014)	