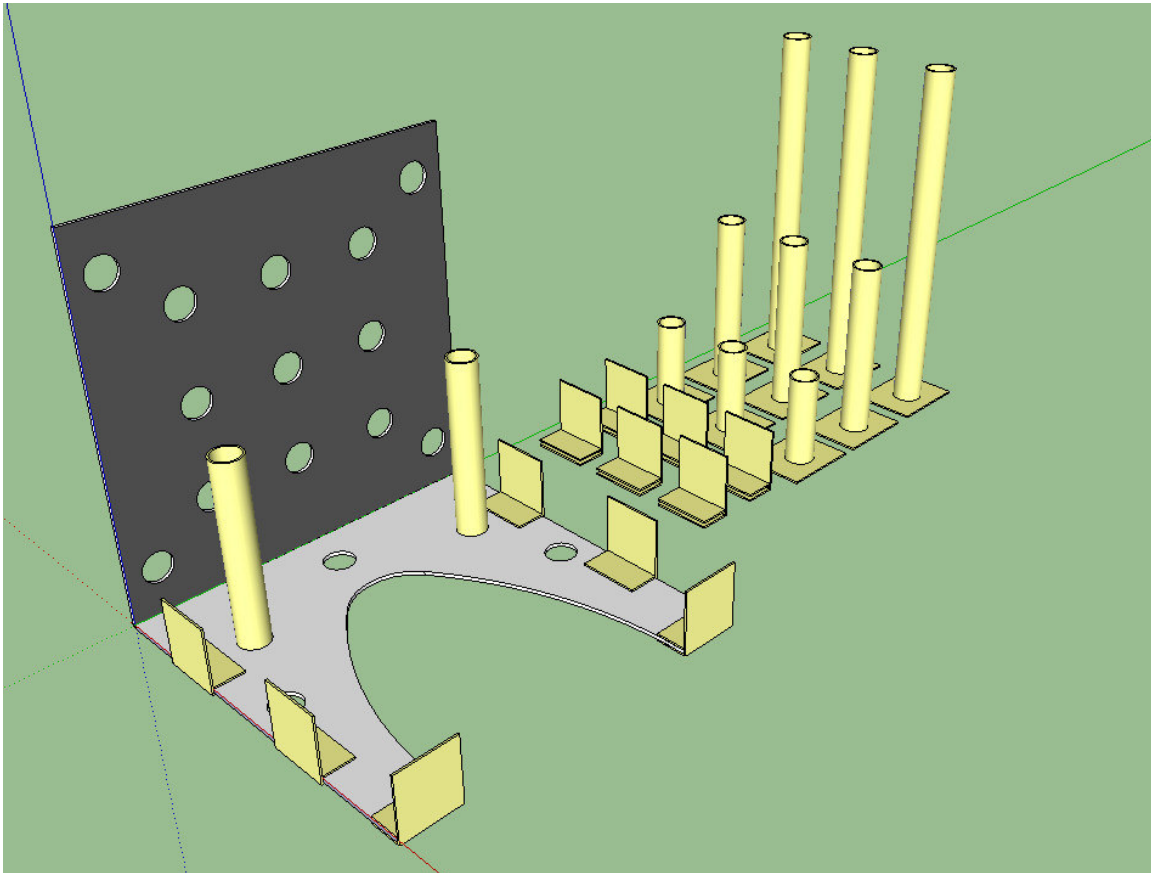


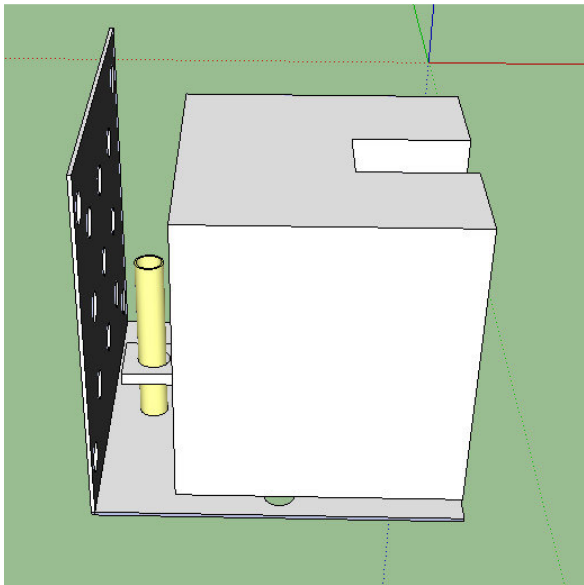
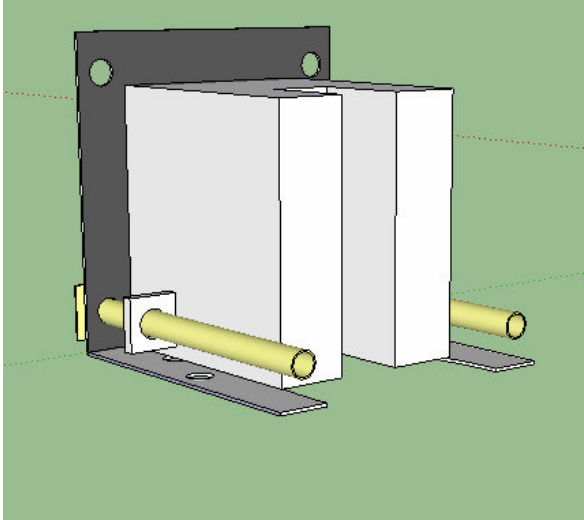
The idea is to have a very simple L-shaped platform with some removable attachments that will help stabilize the minibot. Holes are drilled in many places for major flexibility in ways to support a minibot.

The stuff in yellow is all removable. The tubes are designed to go into any of the holes: vertically or horizontally. The tabs can be attached along the edges to help prevent the robot from slipping out.

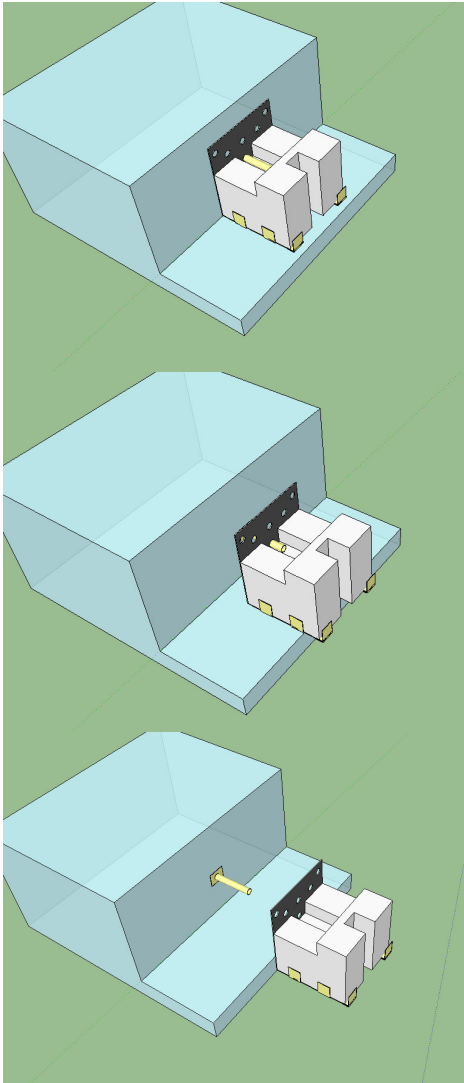
The black face (vertical in this case) of the platform is covered in Velcro for yet another support option or additional stability.



Below are some examples of how it could be used with some hypothetical minibot designs:



The next example shows one of the removable tubes in the horizontal configuration, but in this case the tube is attached to the hostbot, not the platform, so as the platform slides out, the tube no longer holds the minibot from moving up.



The next example shows how the platform doesn't have to be held in the same orientation during the match.

