



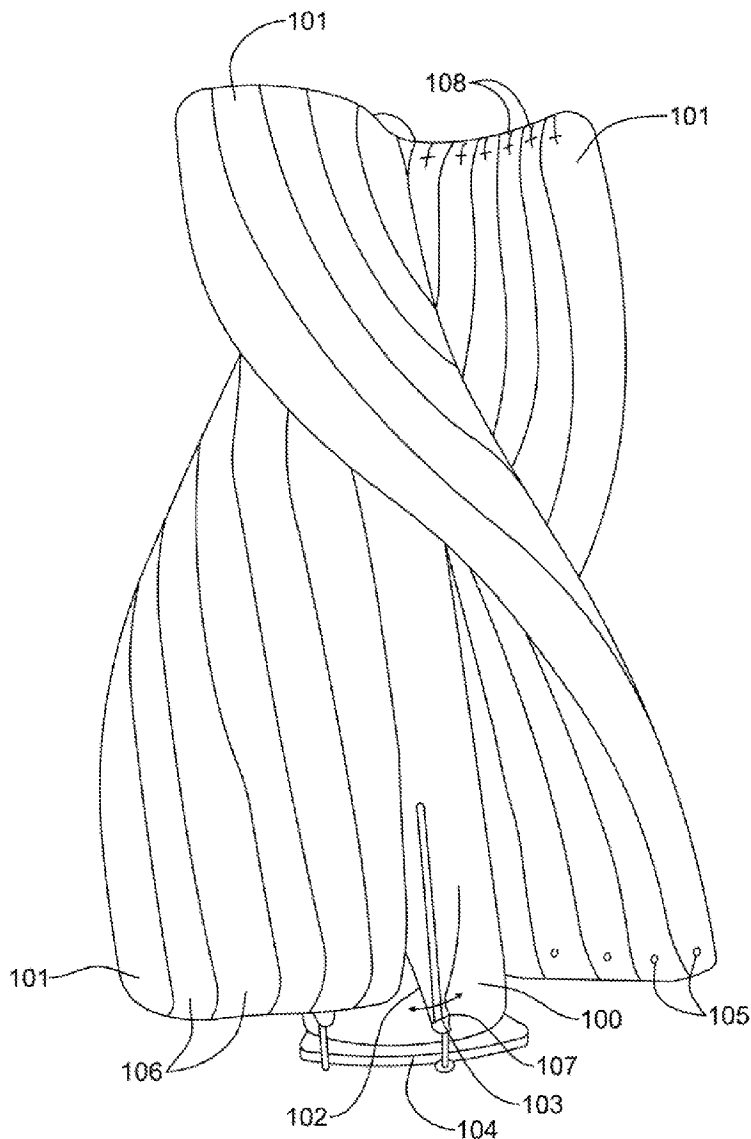
US 20110215738A1

(19) **United States**(12) **Patent Application Publication**
Kamen et al.(10) **Pub. No.: US 2011/0215738 A1**(43) **Pub. Date: Sep. 8, 2011**(54) **WIND TURBINE APPARATUS, SYSTEMS AND METHODS****Related U.S. Application Data**

(60) Provisional application No. 61/310,940, filed on Mar. 5, 2010.

(75) Inventors: **Dean Kamen**, Bedford, NH (US);
Christopher C. Langenfeld,
Nashua, NH (US); **Stanley B.**
Smith, III, Raymond, NH (US);
Andrew A. Schnellinger,
Merrimack, NH (US); **George B.**
Lanigan, Concord, NH (US)**Publication Classification**(51) **Int. Cl.**
H05B 37/02 (2006.01)
H02P 9/04 (2006.01)
(52) **U.S. Cl.** **315/302; 290/44**(73) Assignee: **DEKA Products Limited**
Partnership, Manchester, NH (US)(57) **ABSTRACT**(21) Appl. No.: **13/039,640**(22) Filed: **Mar. 3, 2011**

A wind turbine is disclosed. The wind turbine includes comprising an inflatable portion comprising one or more blades and a device for rotatably driving the inflatable portion at a predetermined rate for a predetermined time.



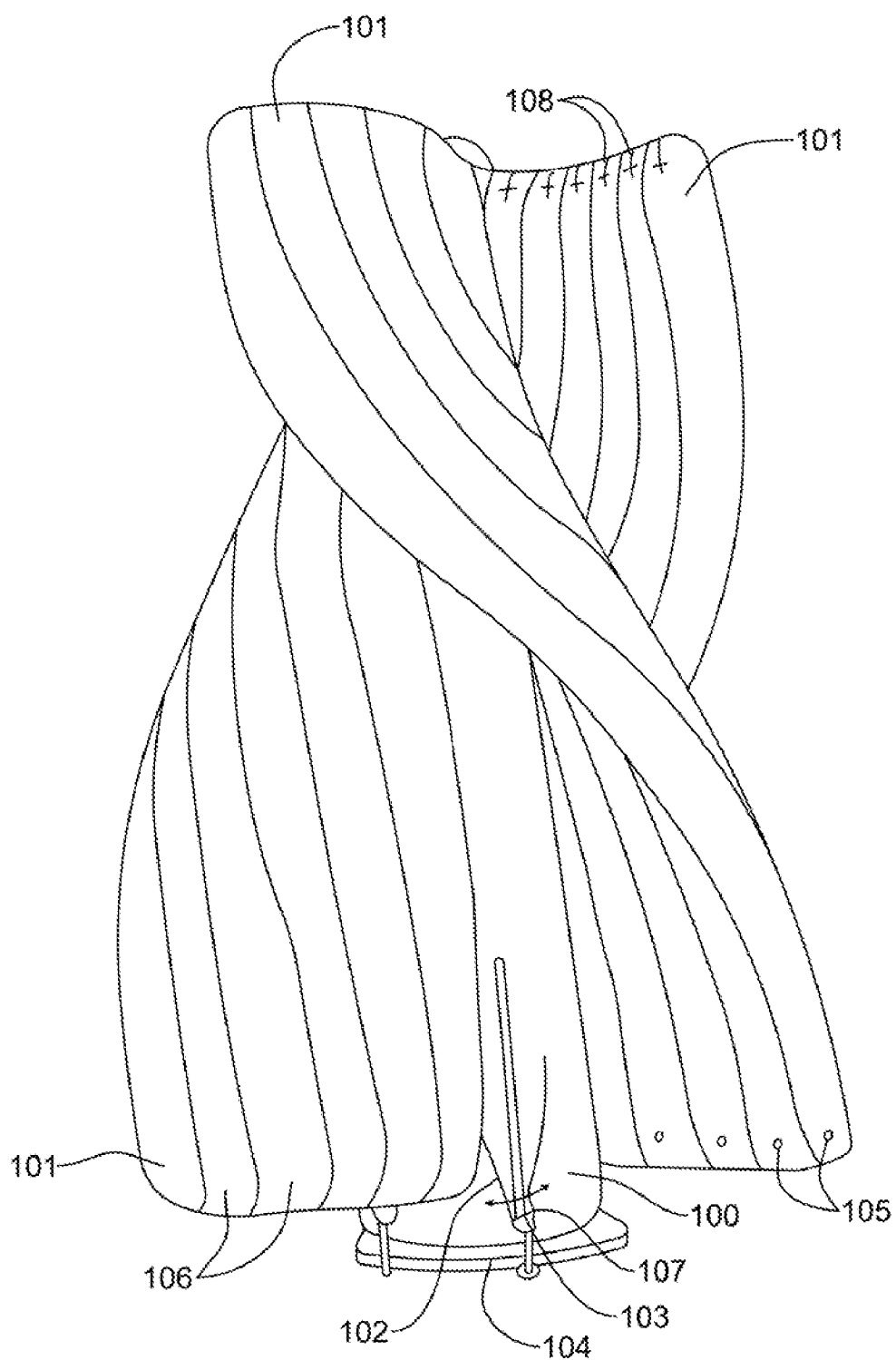


FIG. 1

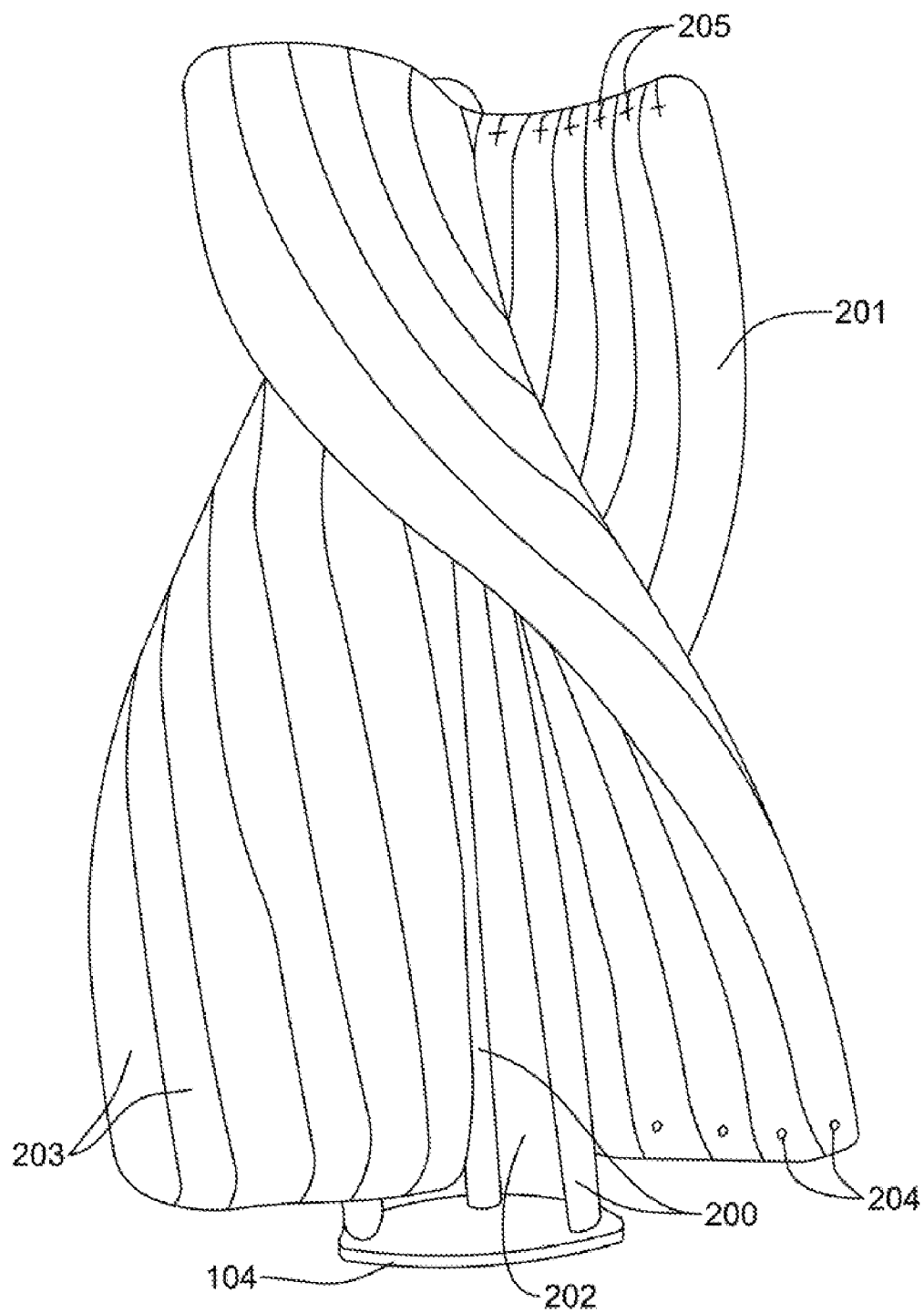


FIG. 2

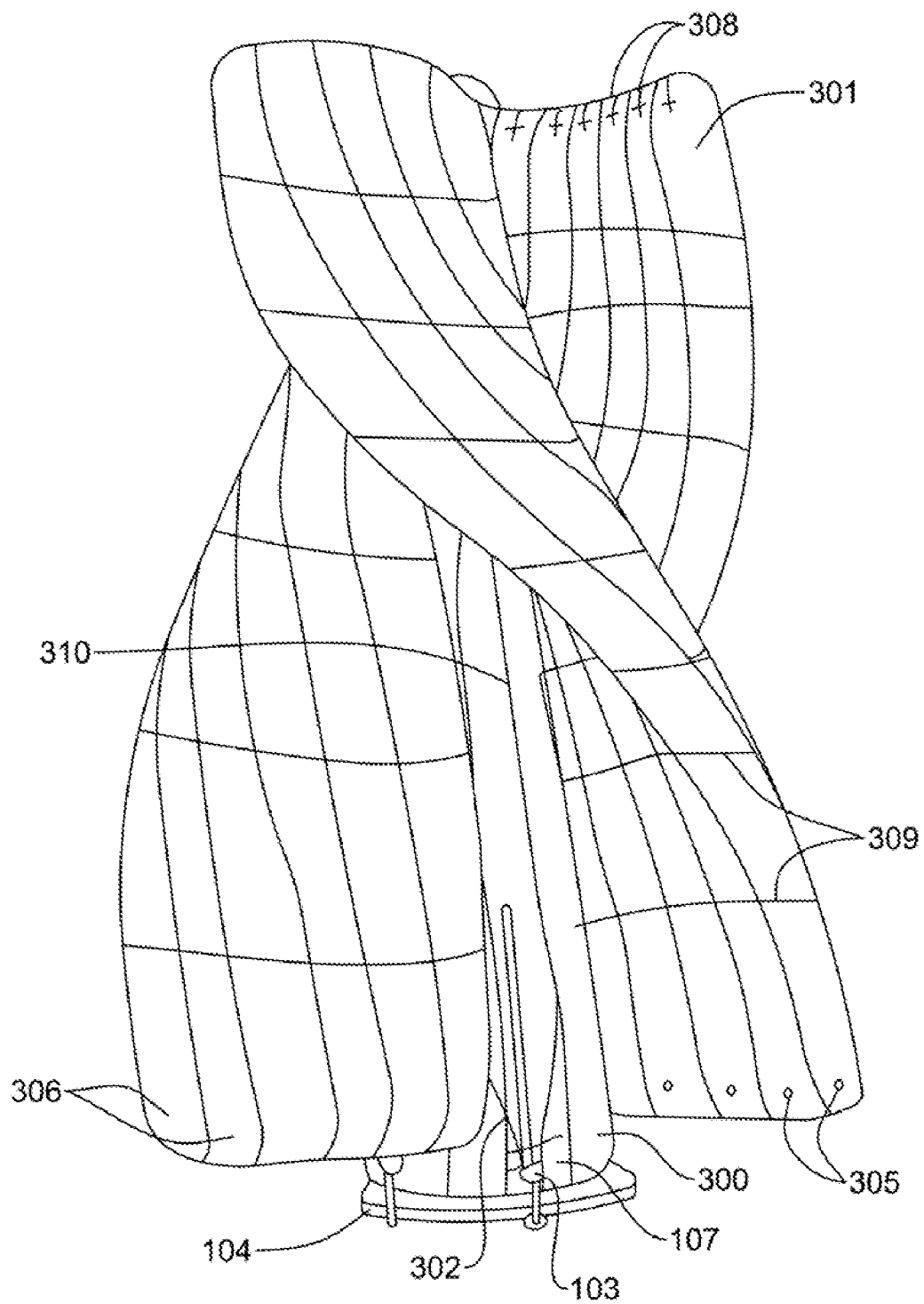


FIG. 3

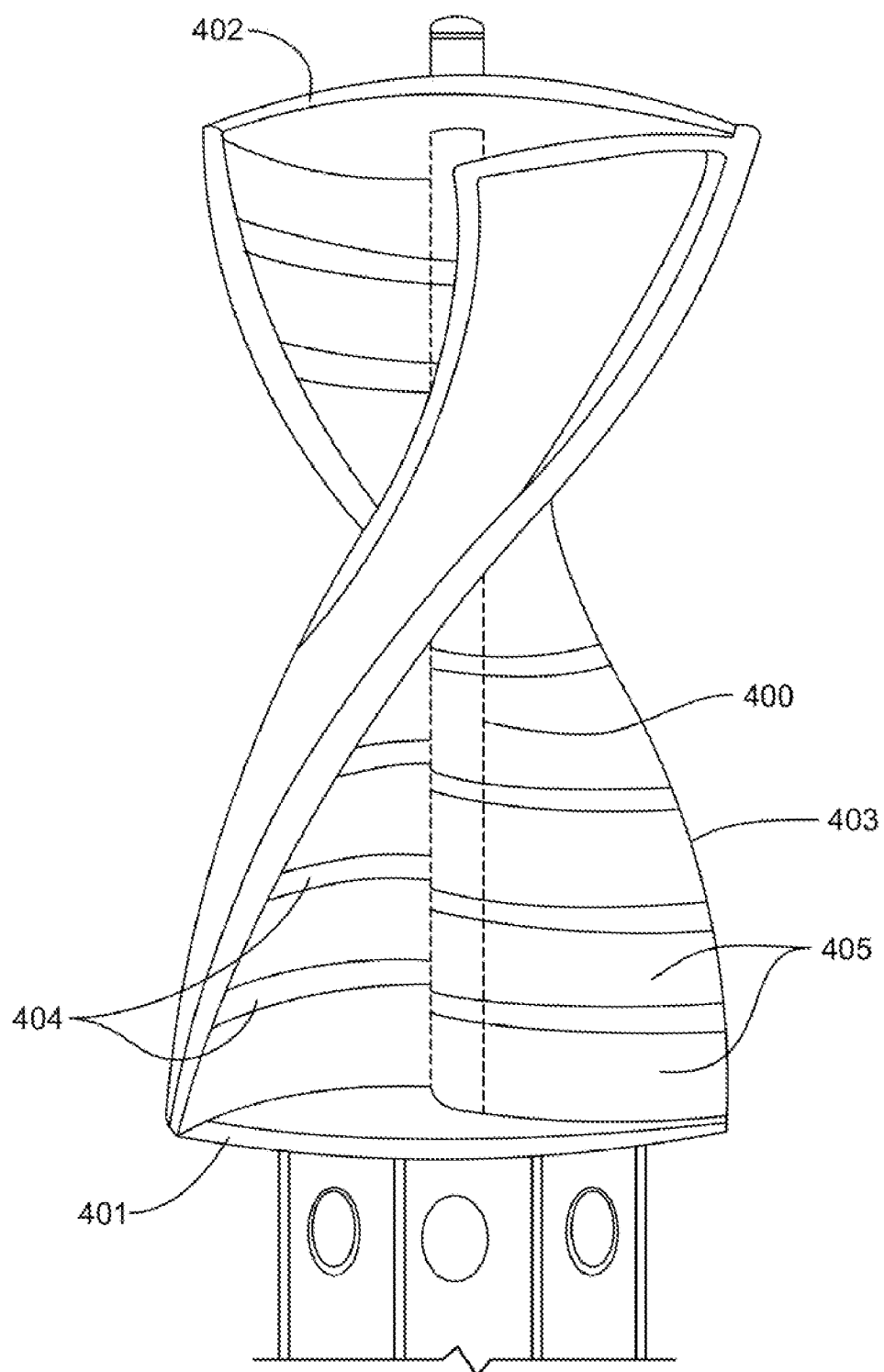


FIG. 4

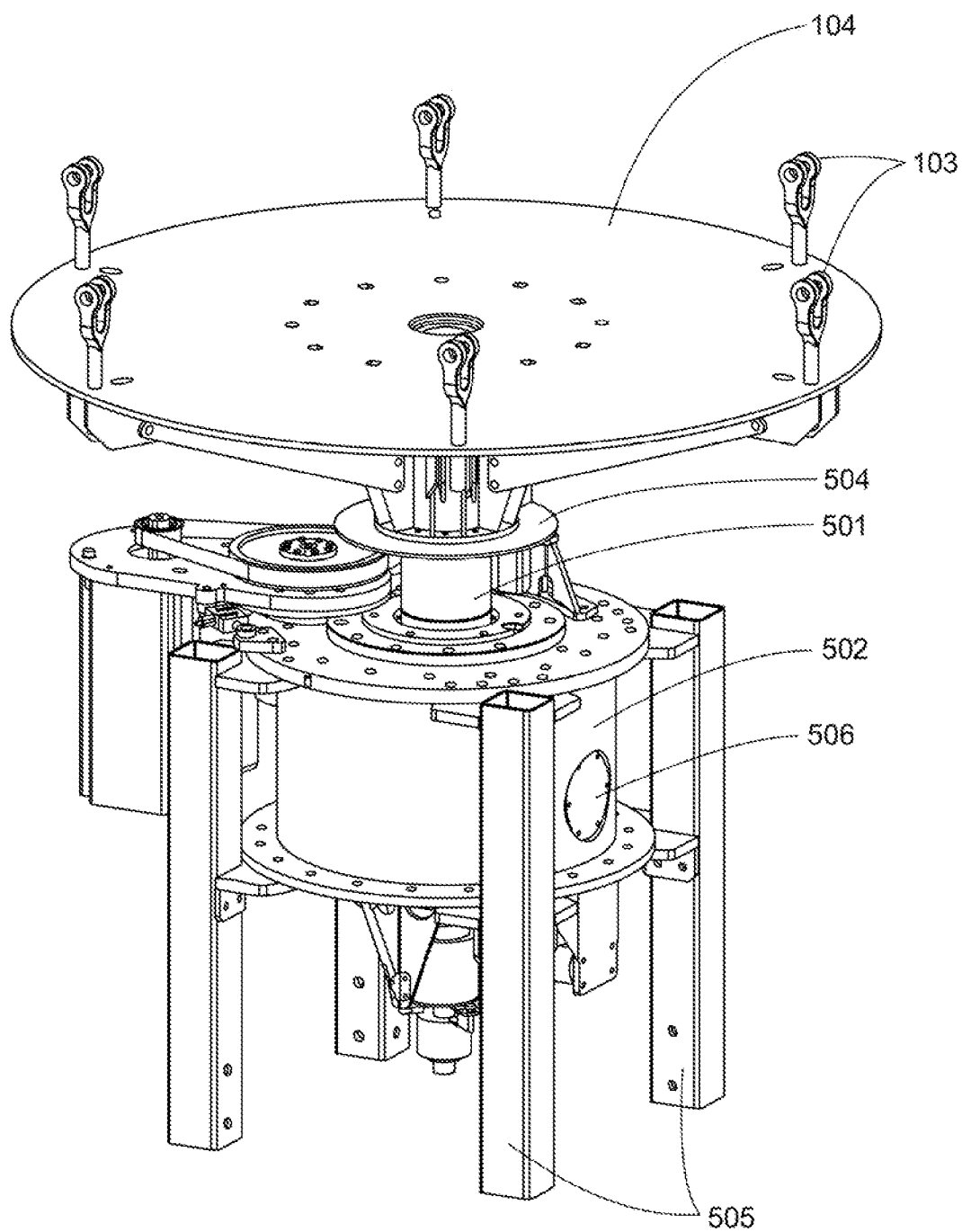


FIG. 5

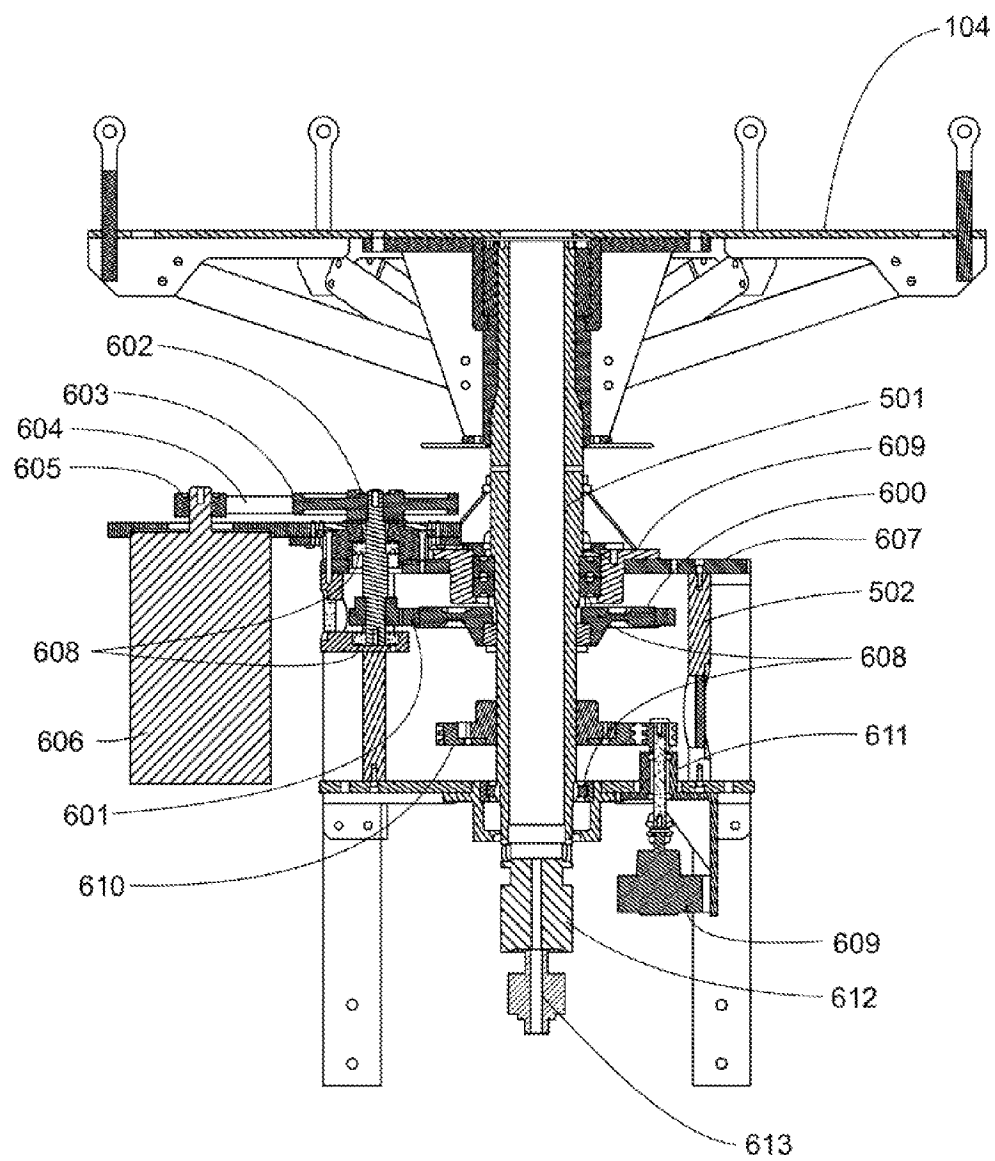


FIG. 6

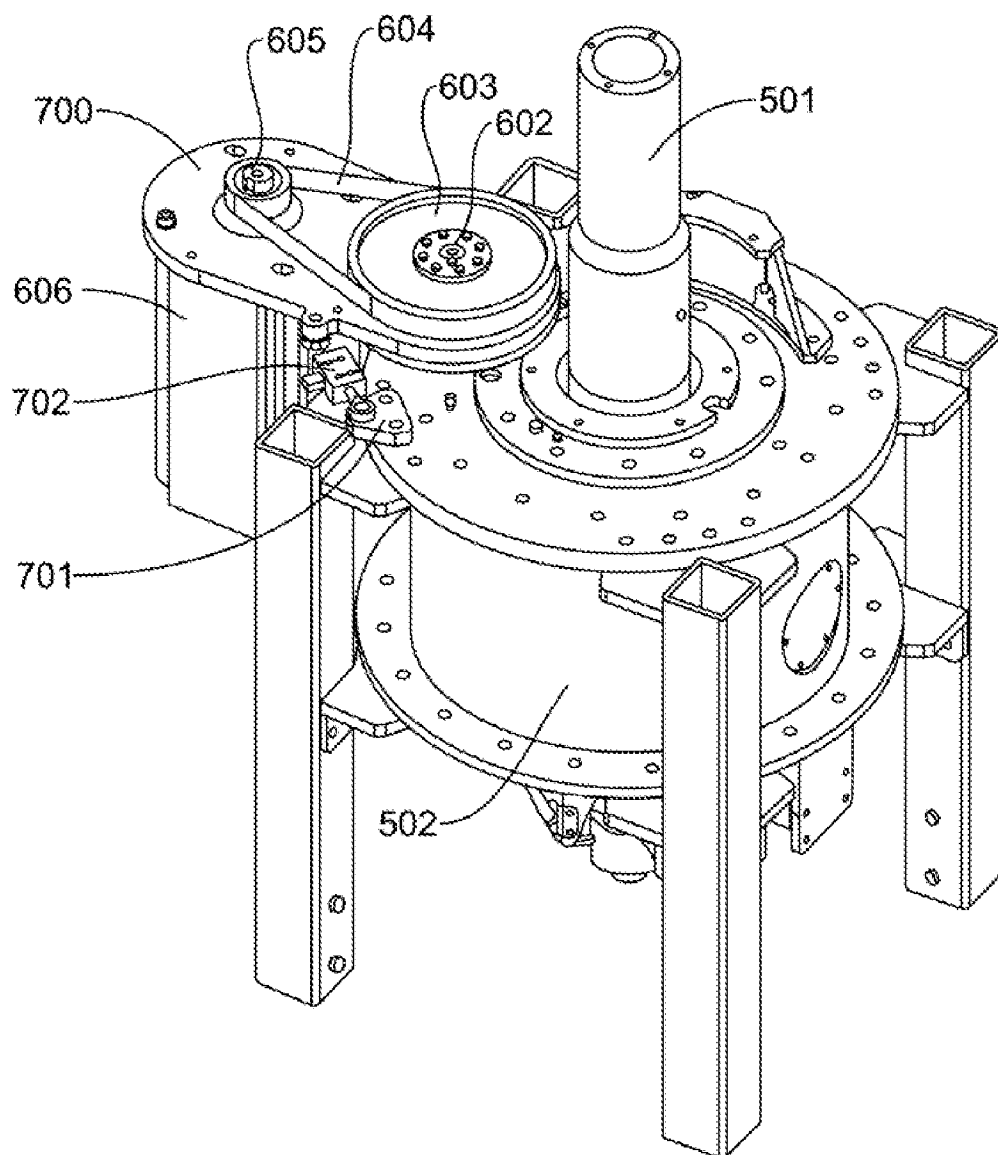
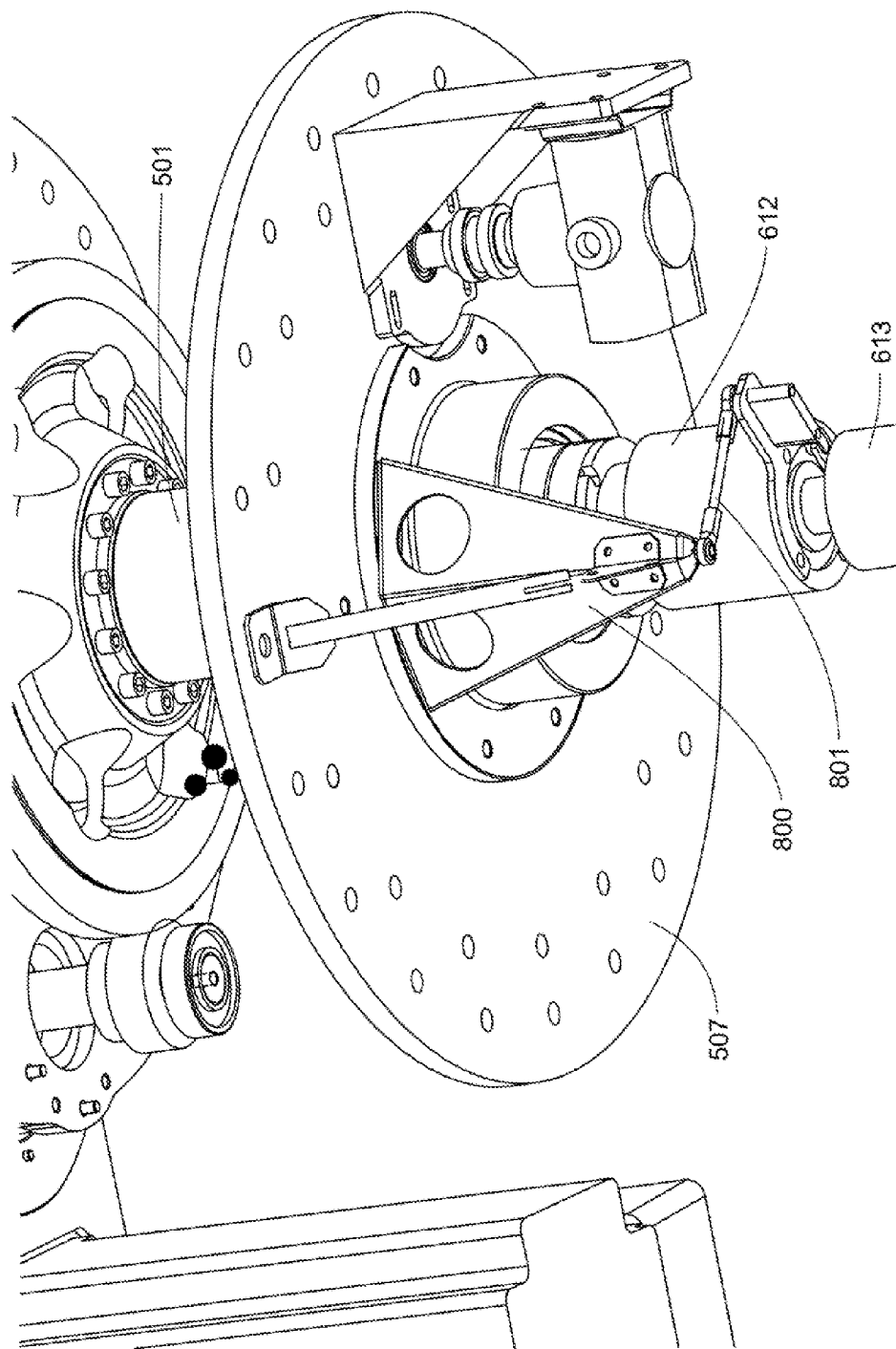


FIG. 7



8
G
L

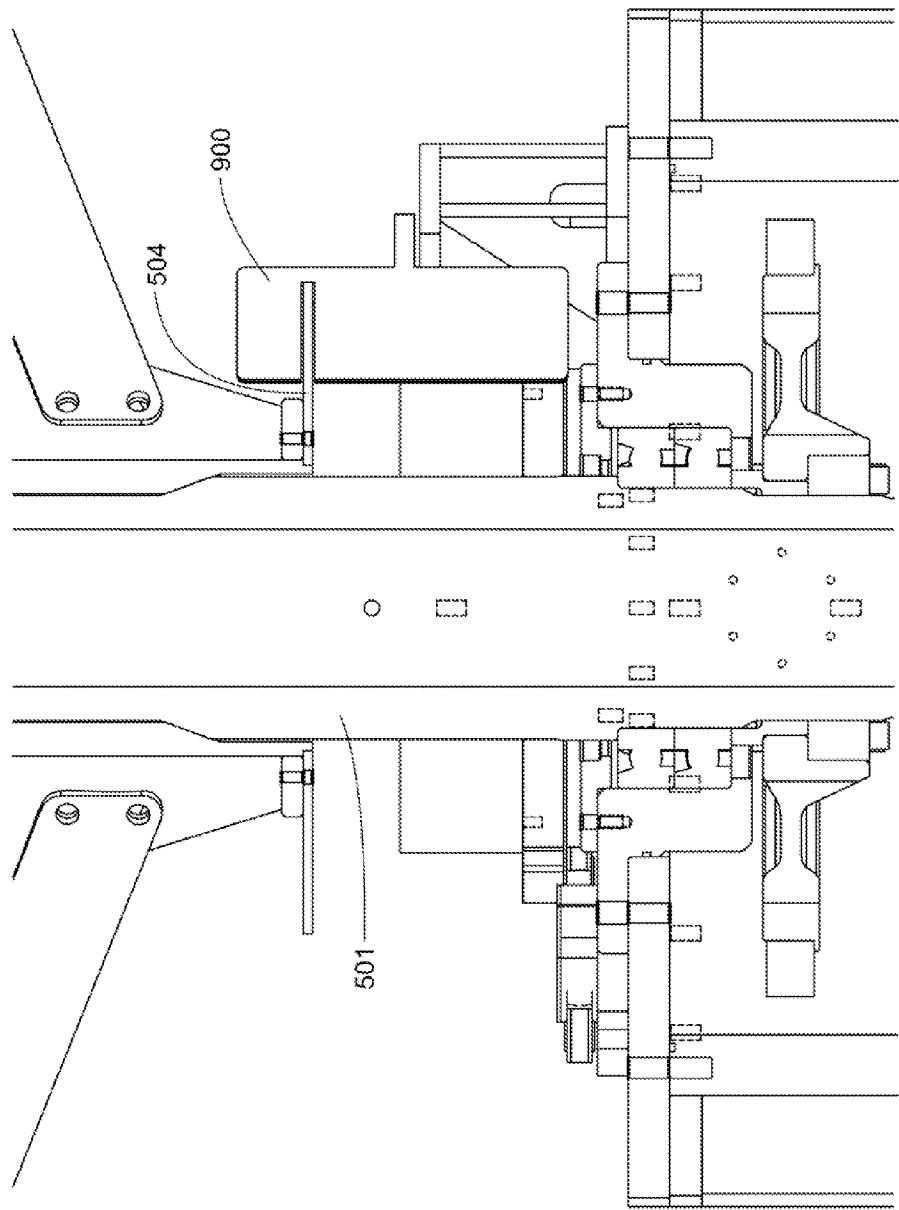


FIG. 9

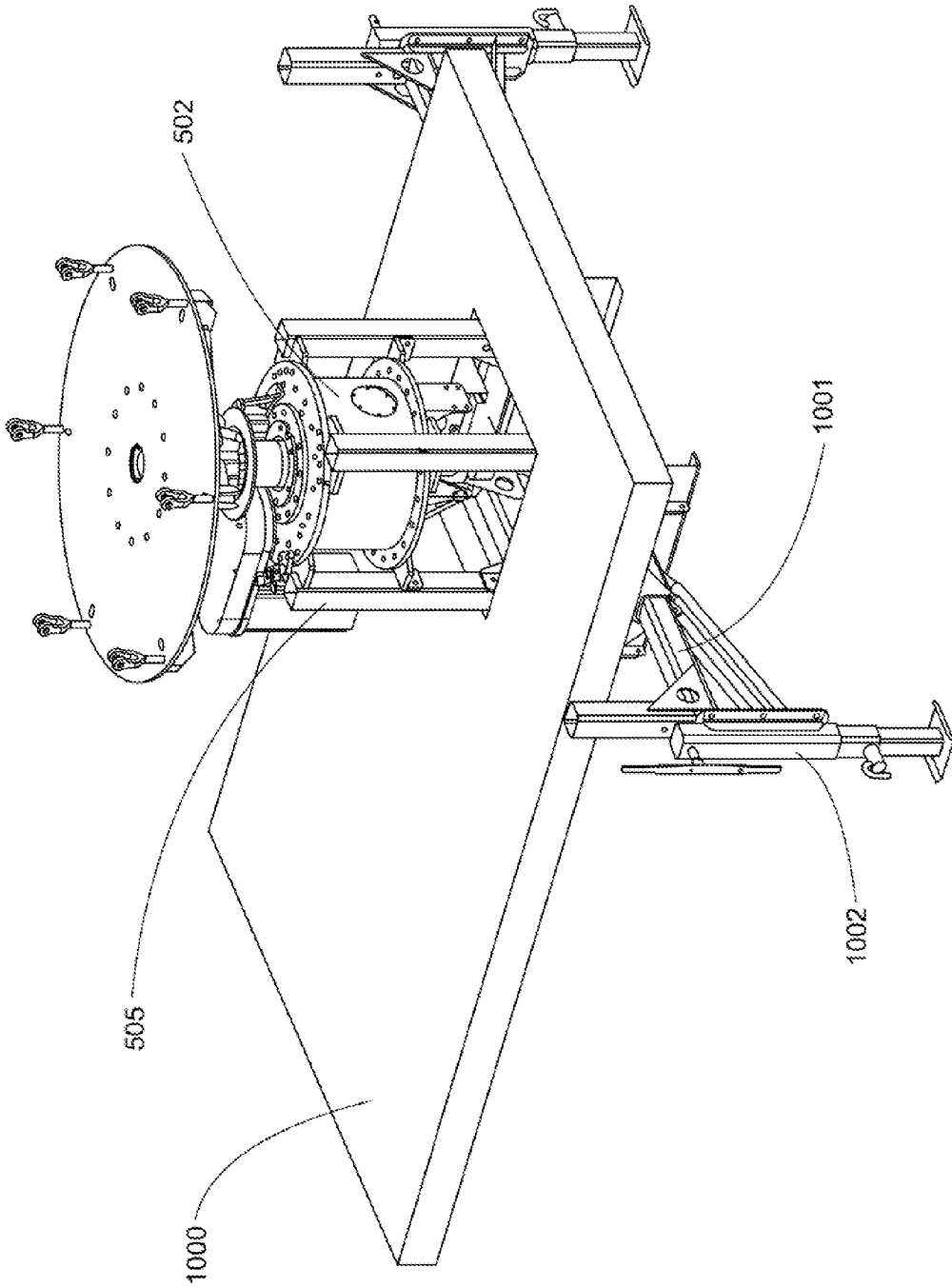


FIG. 10

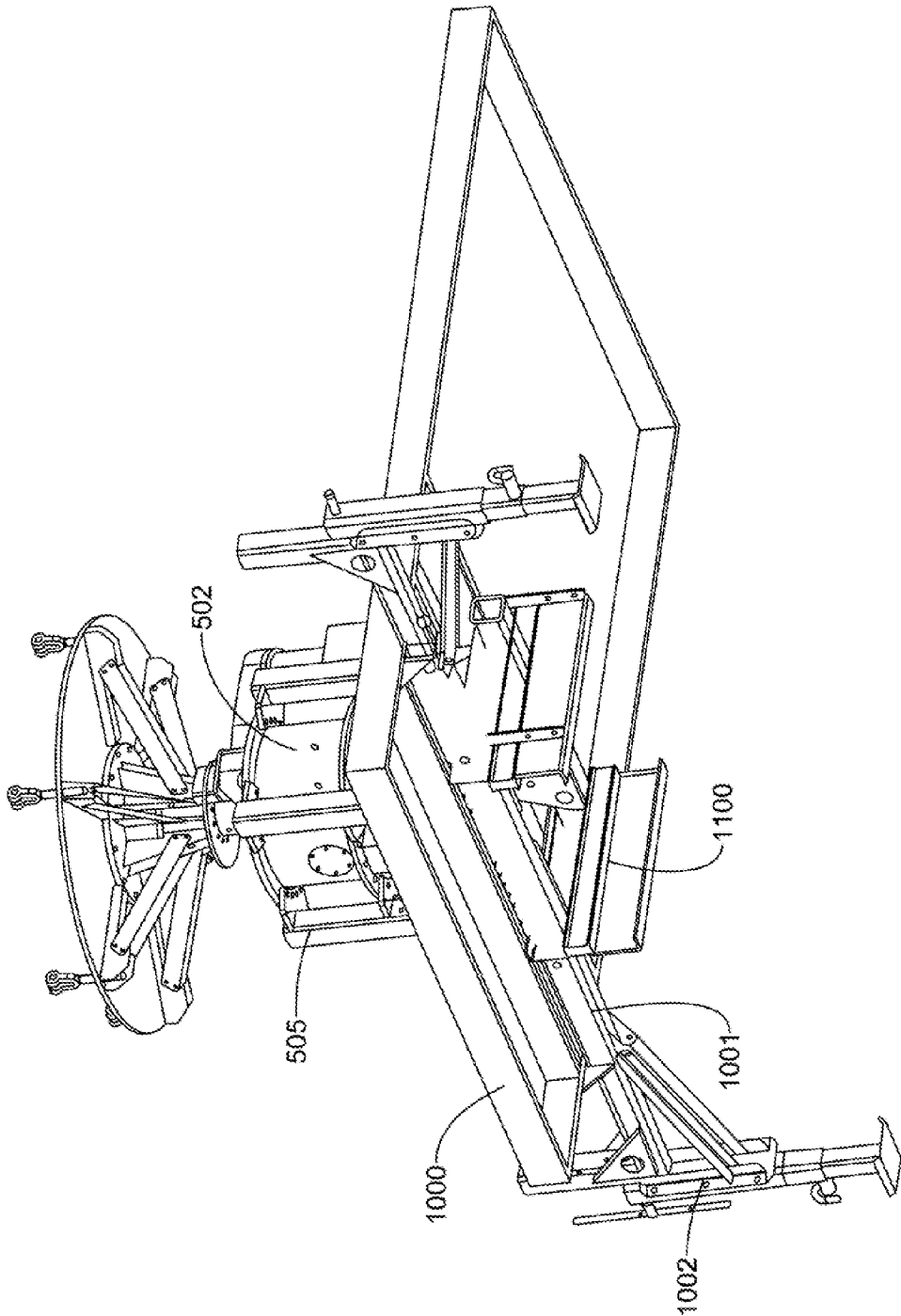
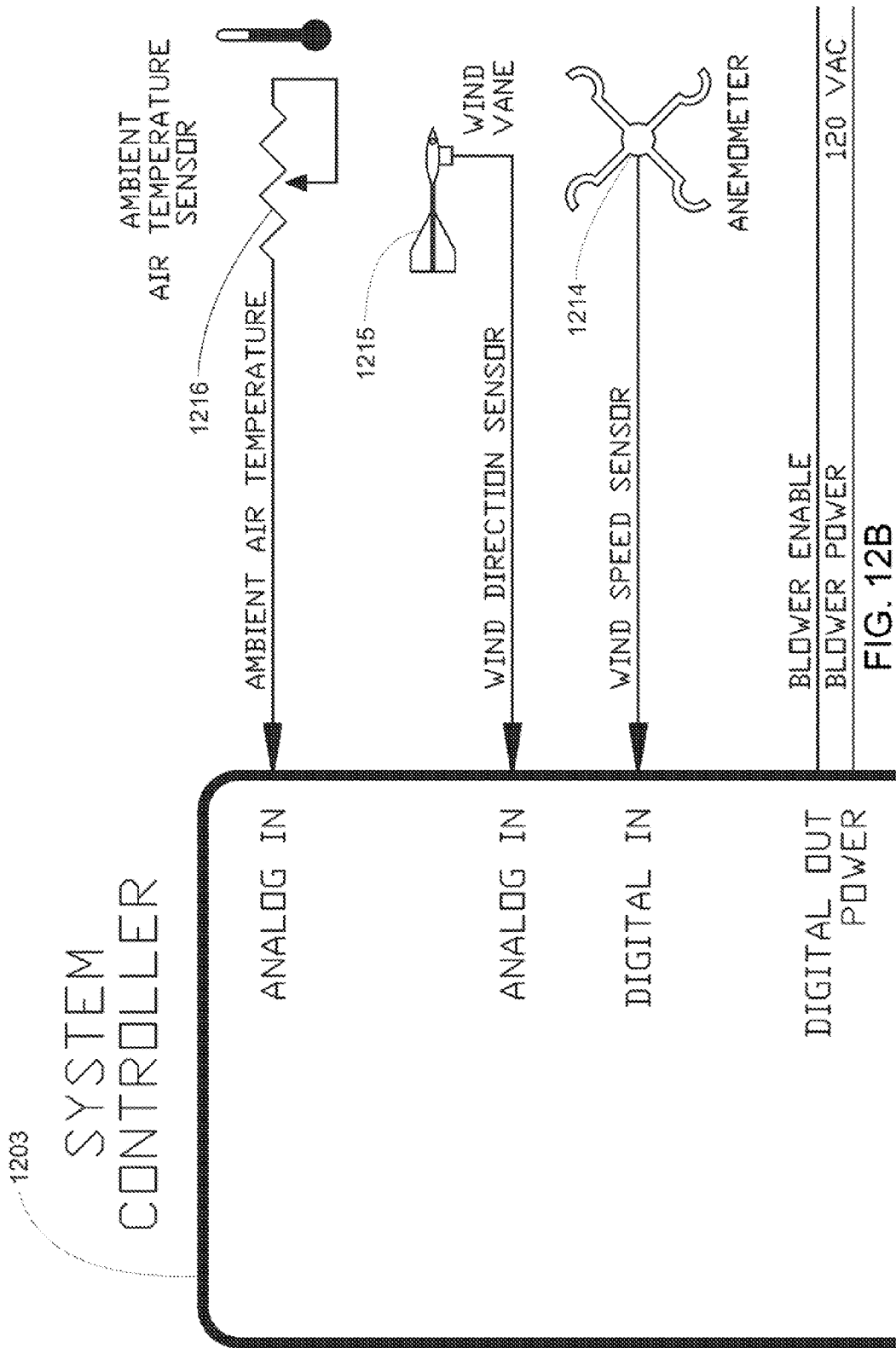


FIG. 11

FIG. 12B	FIG. 12C	FIG. 12D	FIG. 12E
FIG. 12F	FIG. 12G	FIG. 12H	FIG. 12I
FIG. 12J	FIG. 12K	FIG. 12L	FIG. 12M
FIG. 12N	FIG. 12O		

FIG. 12A



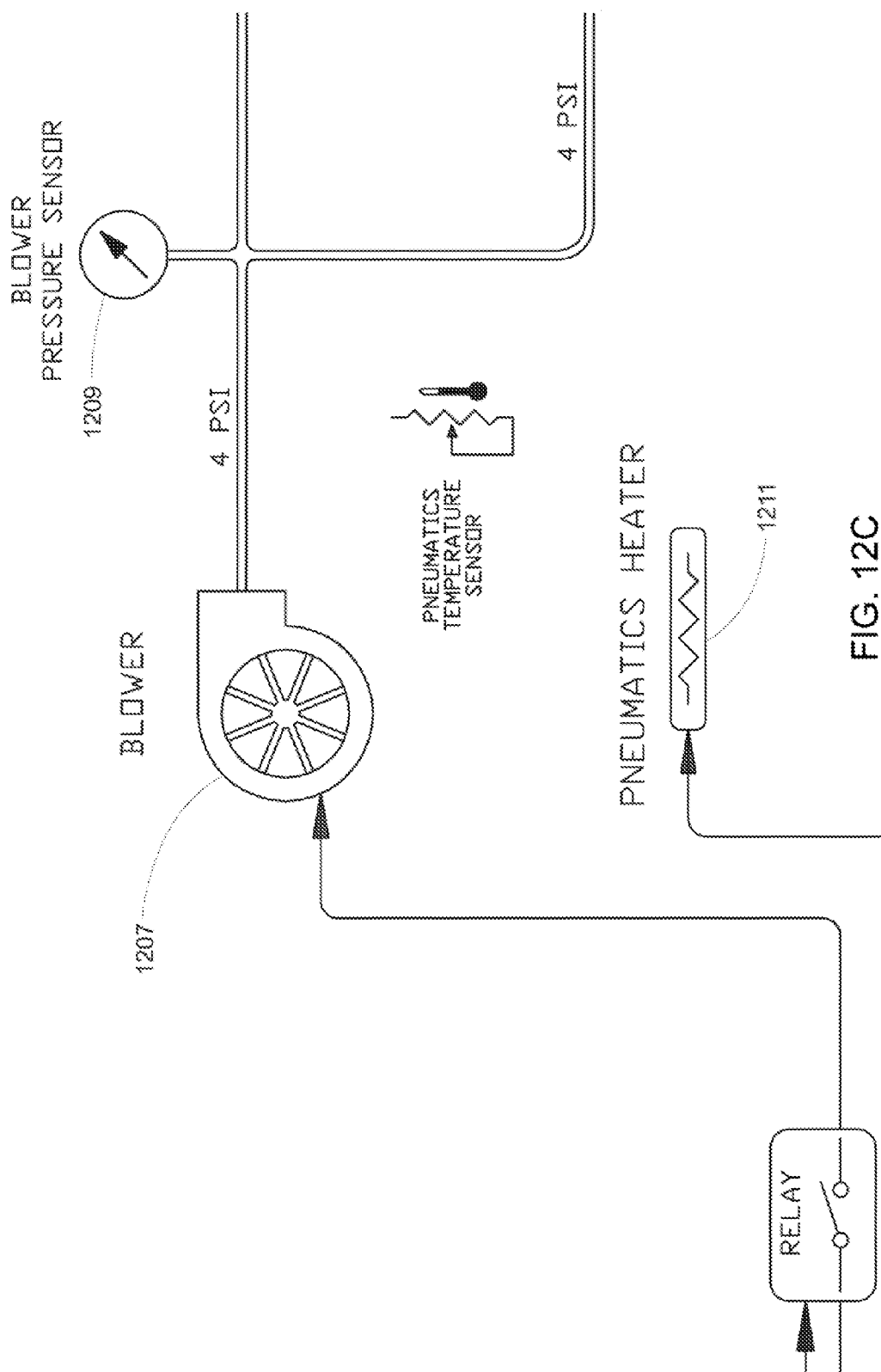


FIG. 12C

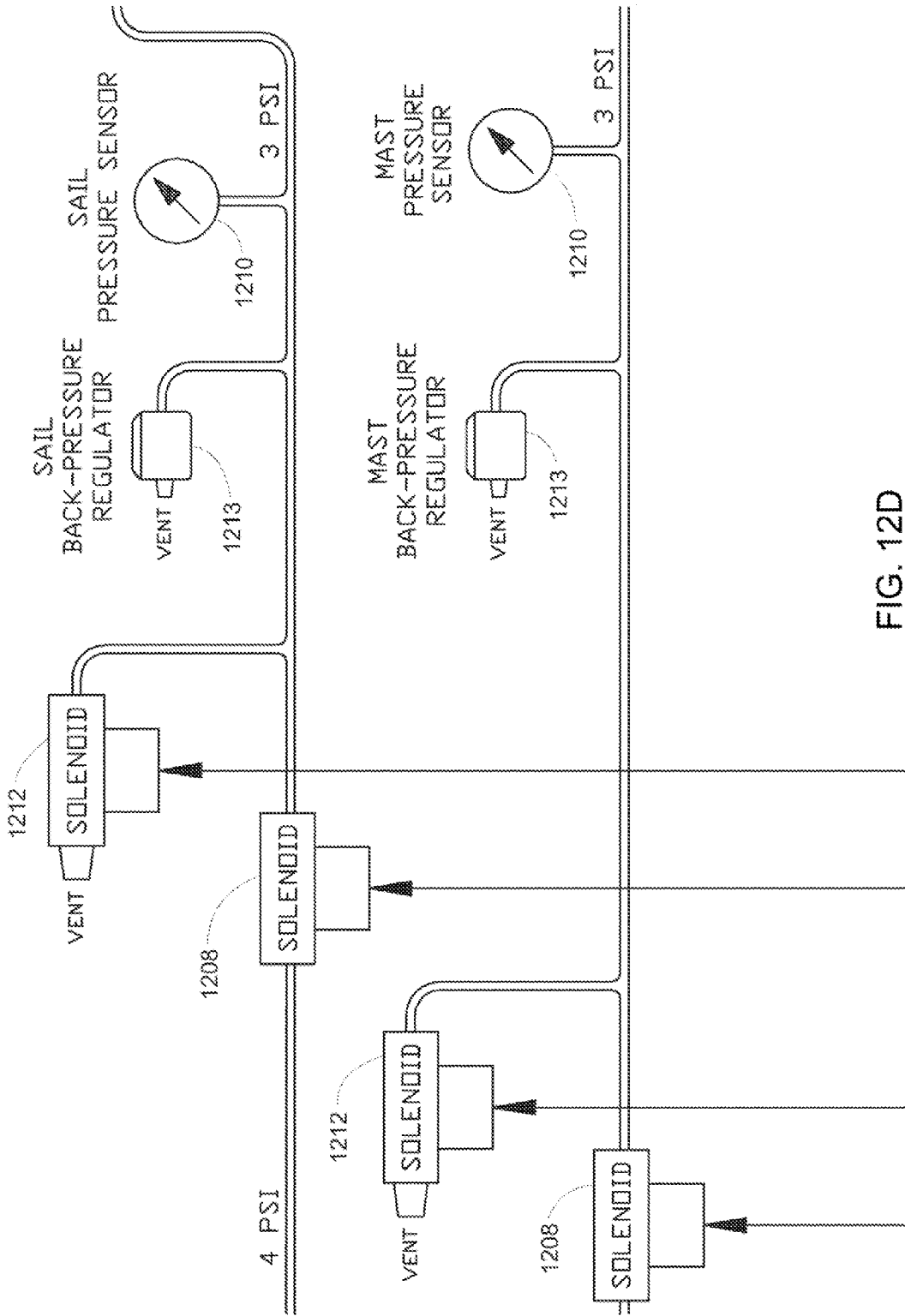


FIG. 12D



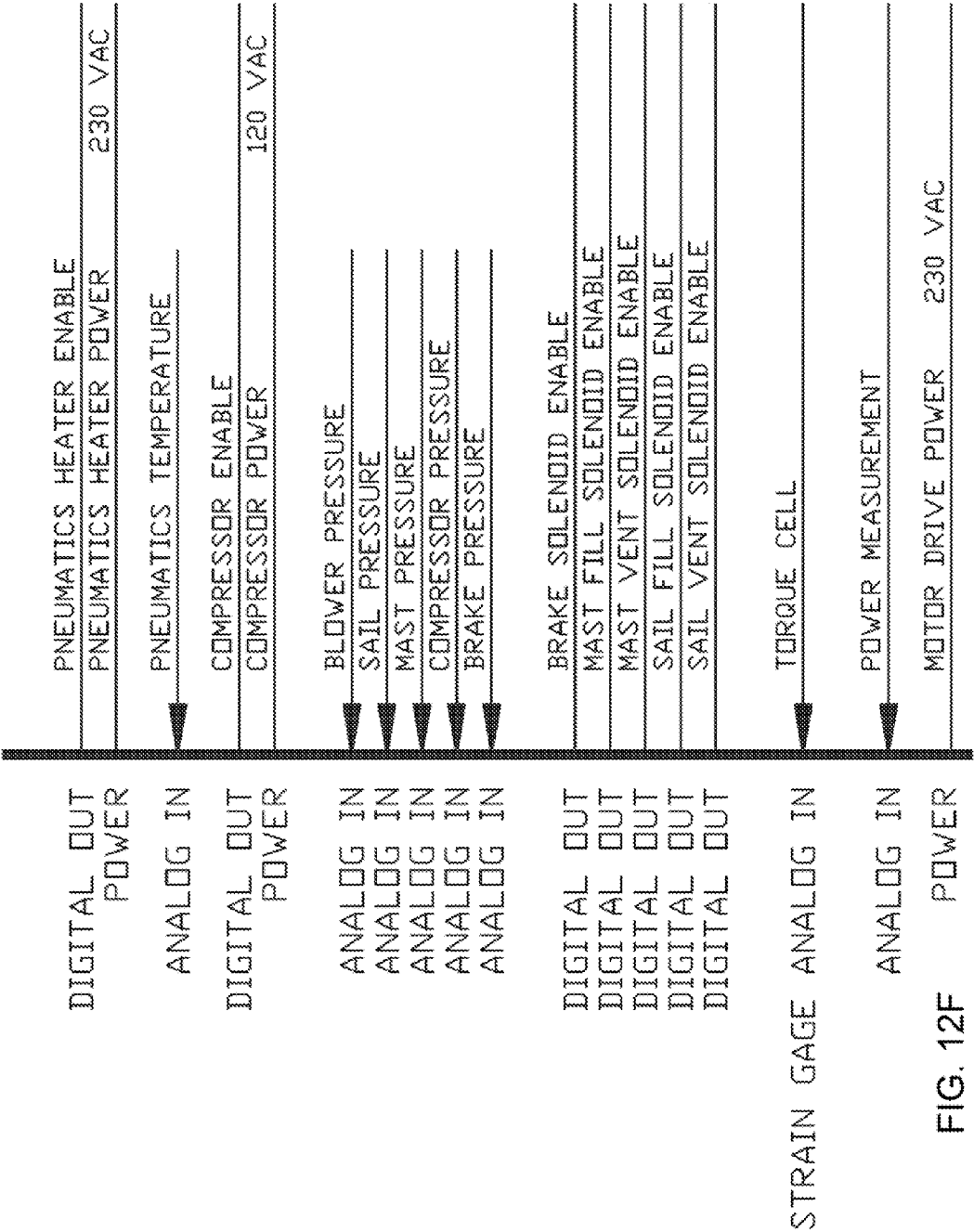


FIG. 12F

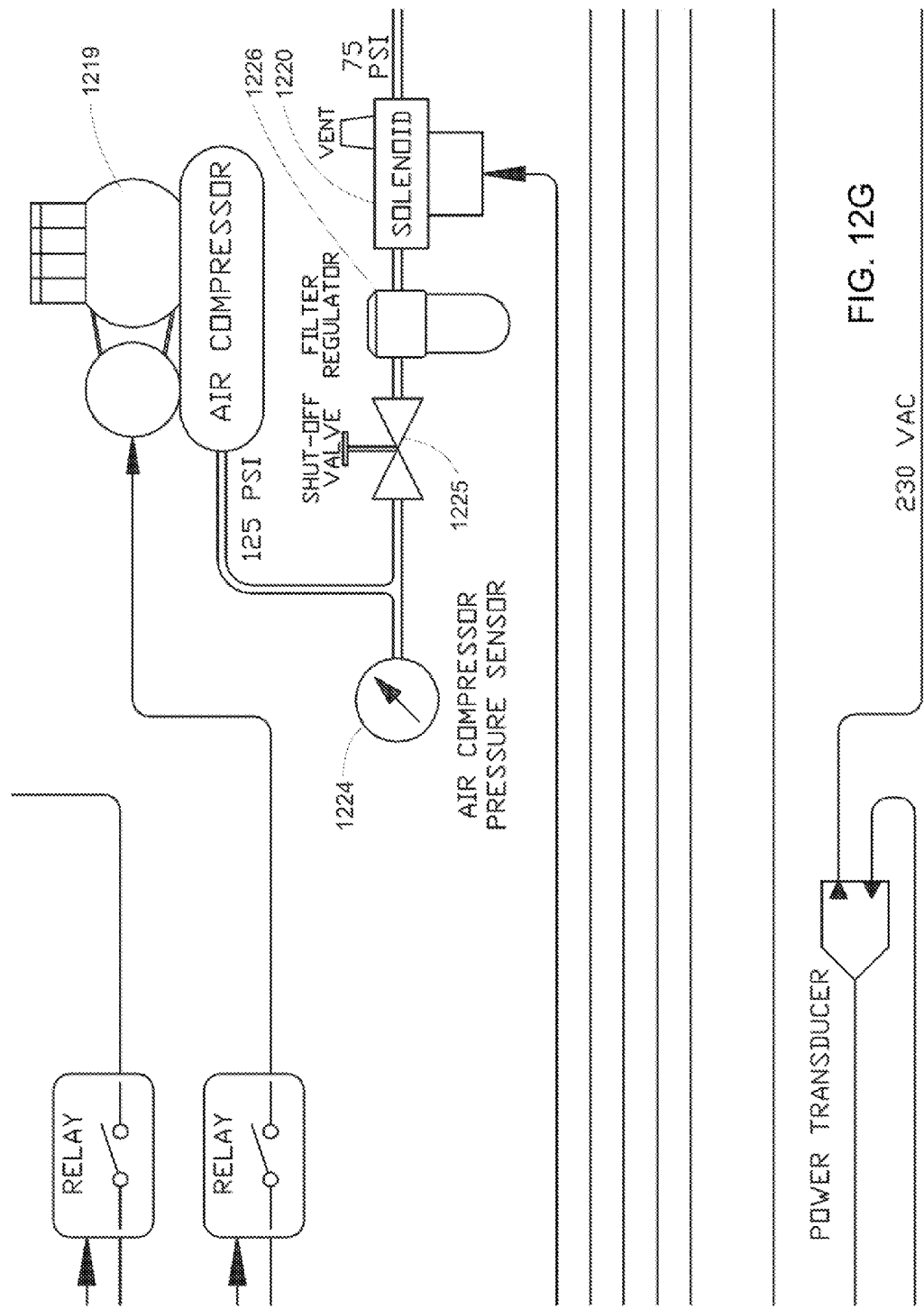
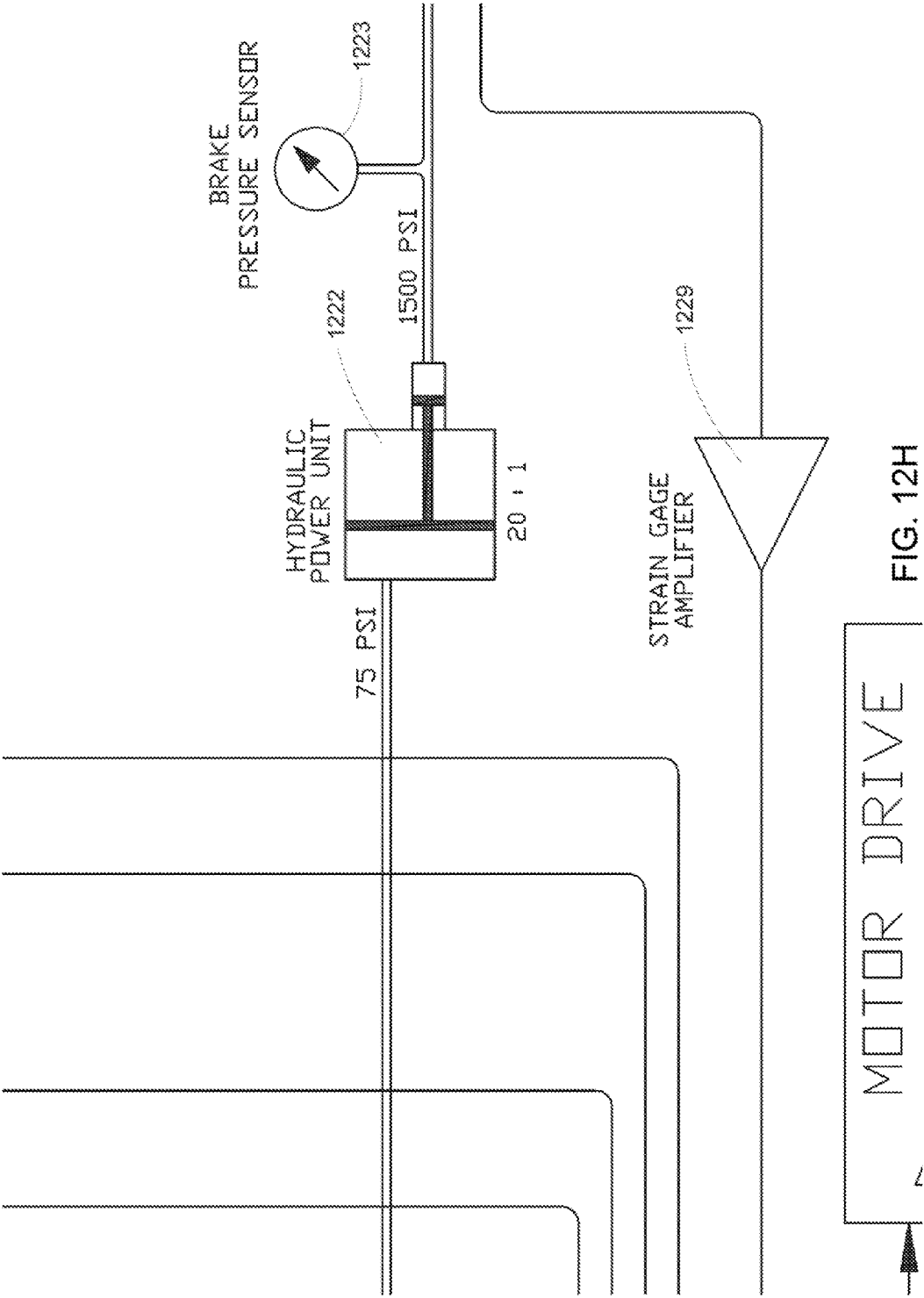
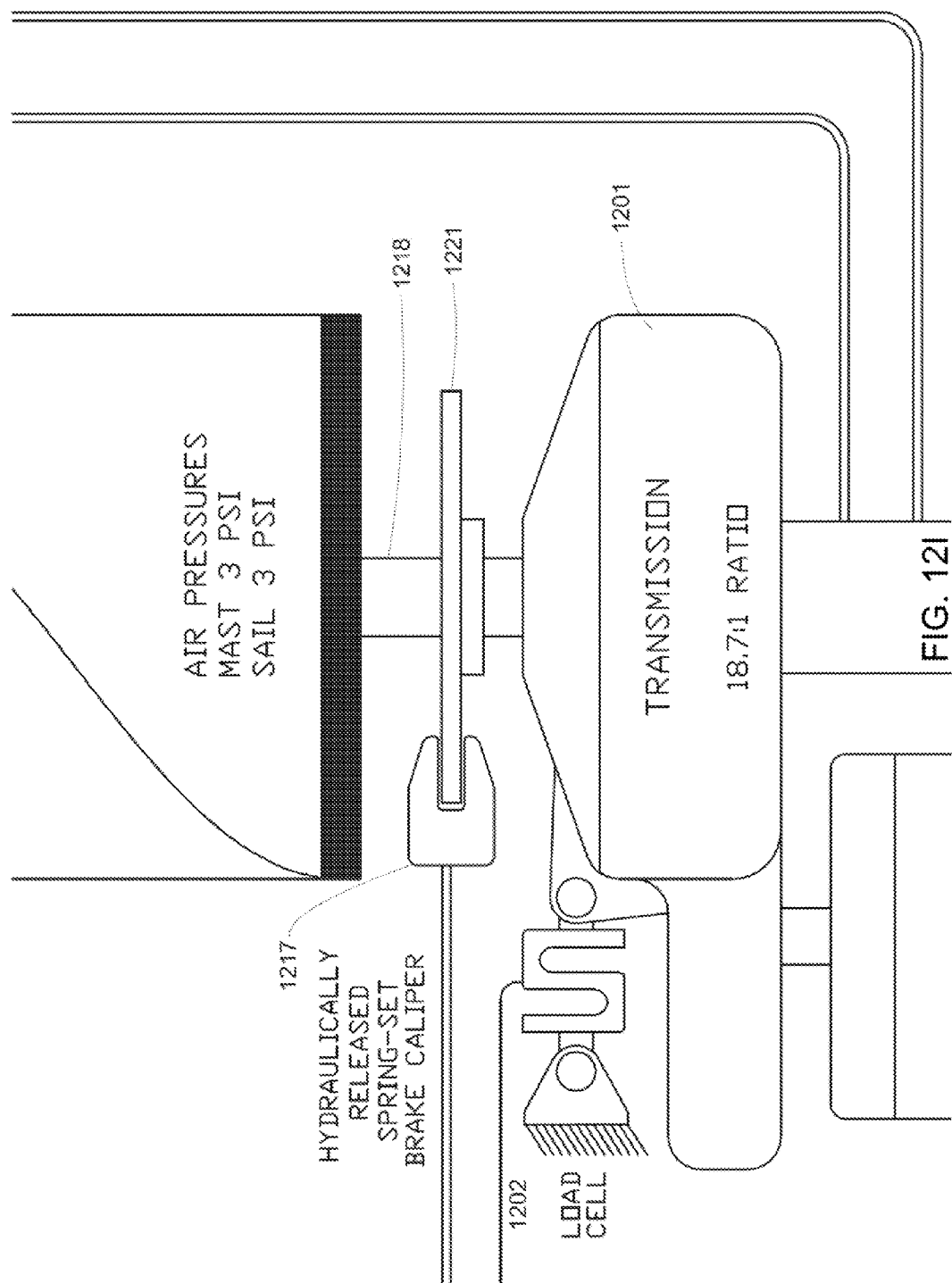


FIG. 12G





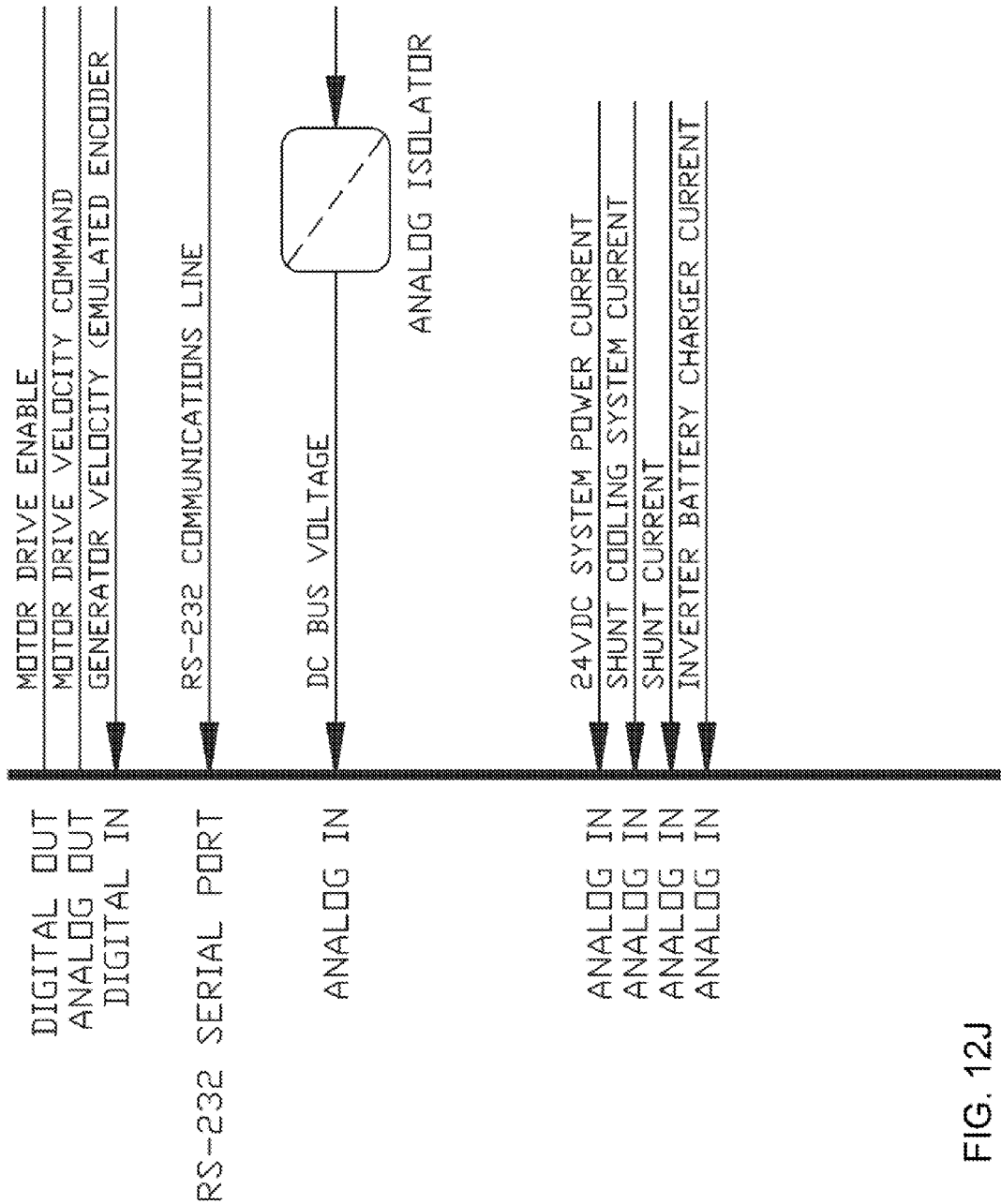


FIG. 12J

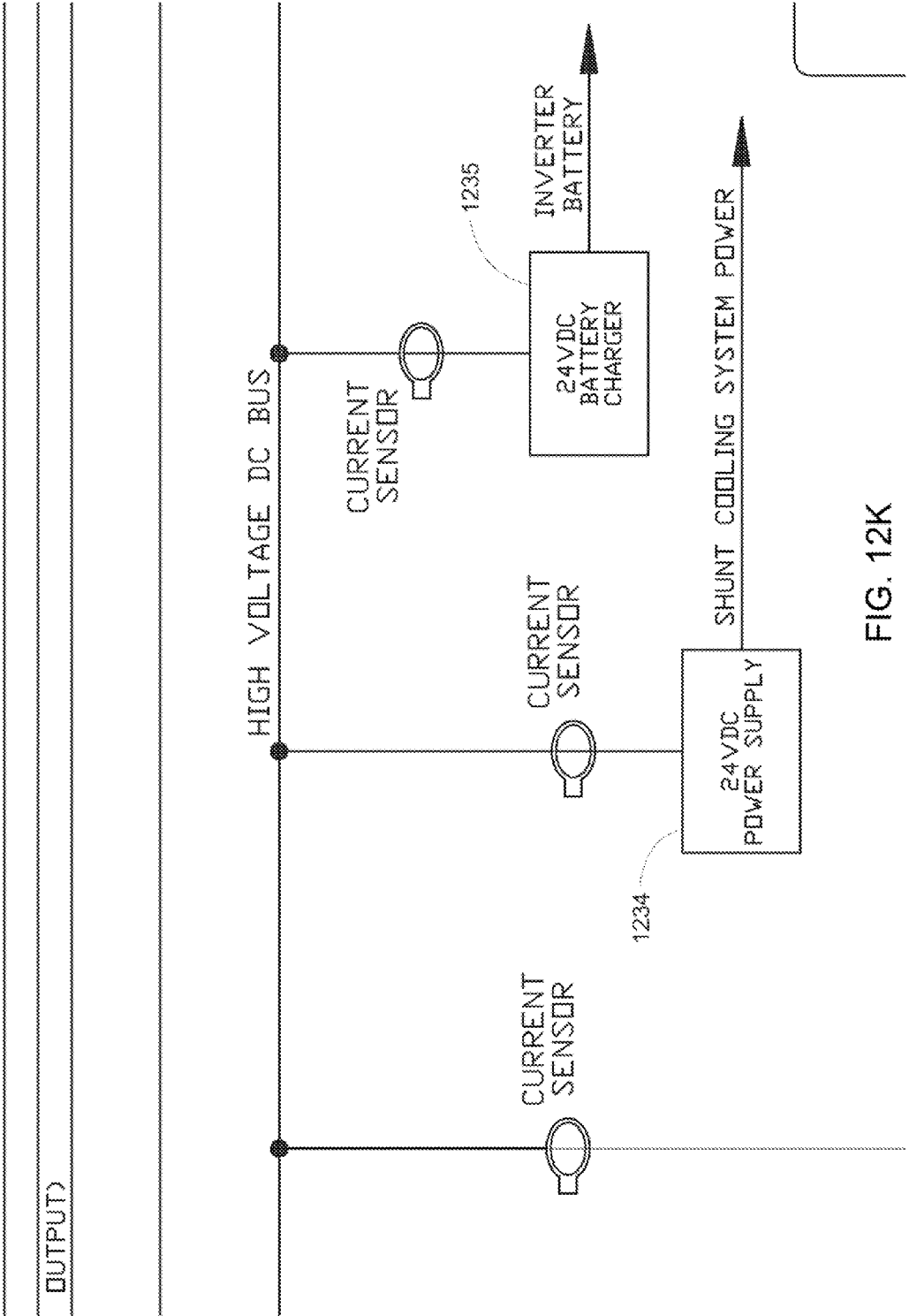


FIG. 12K

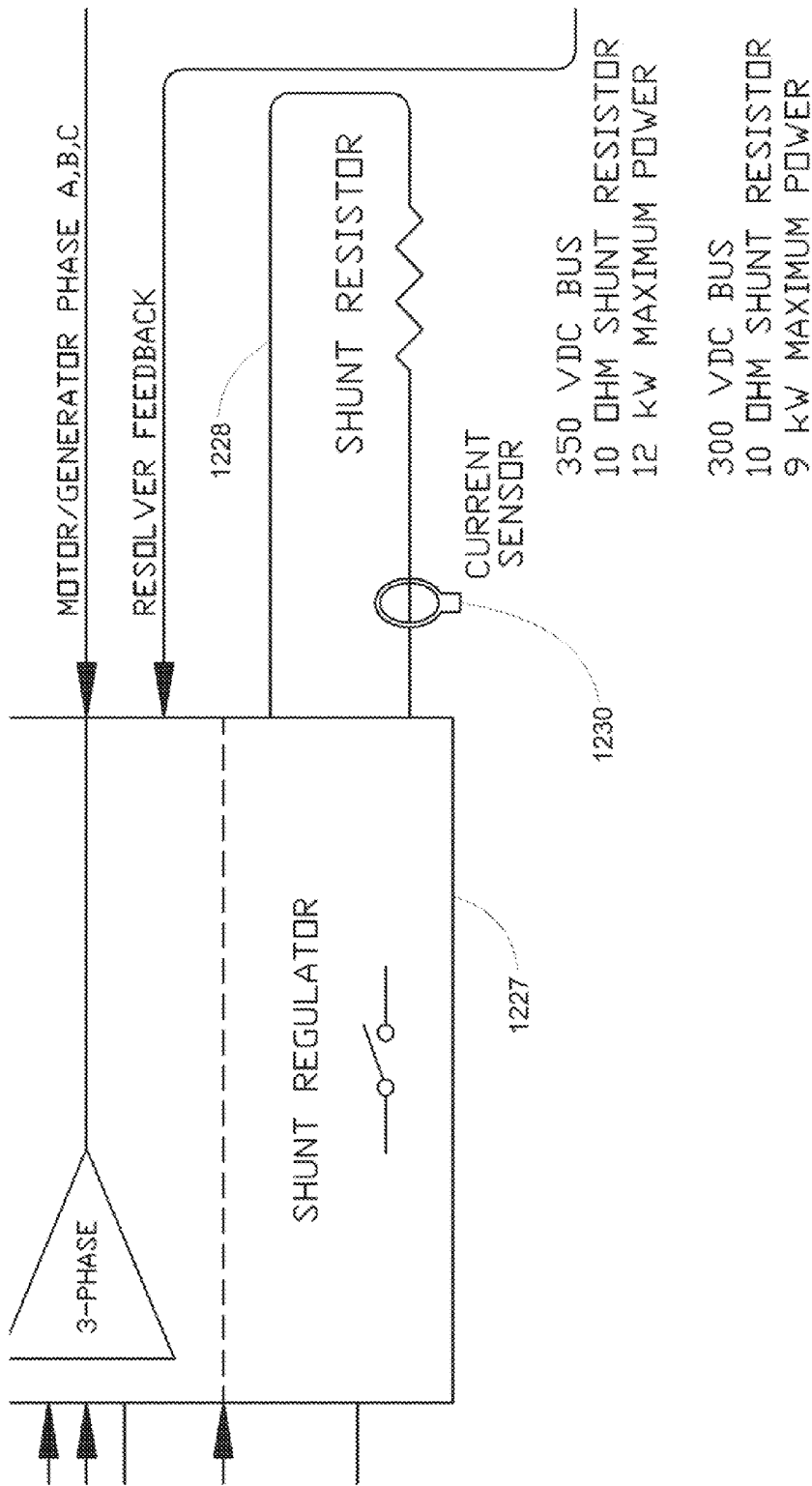


FIG. 12L

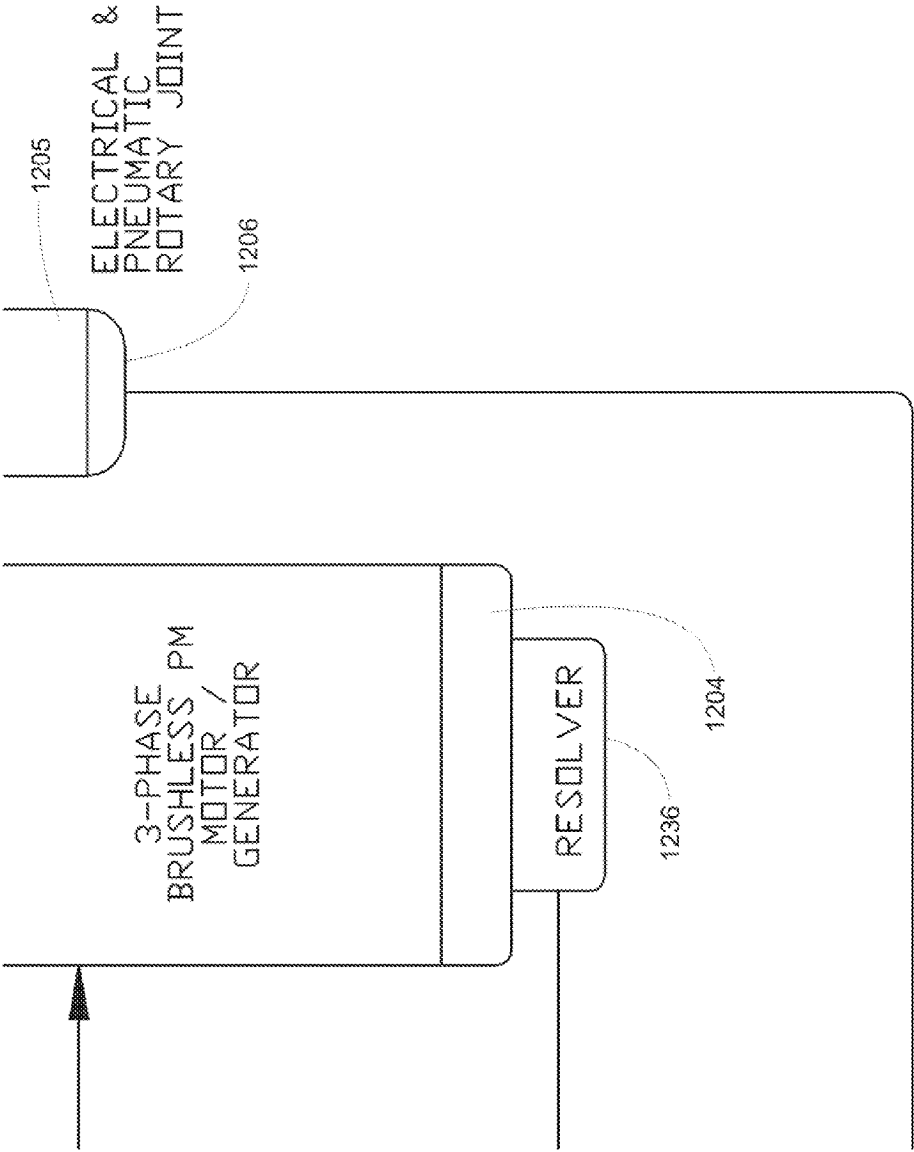


FIG. 12M

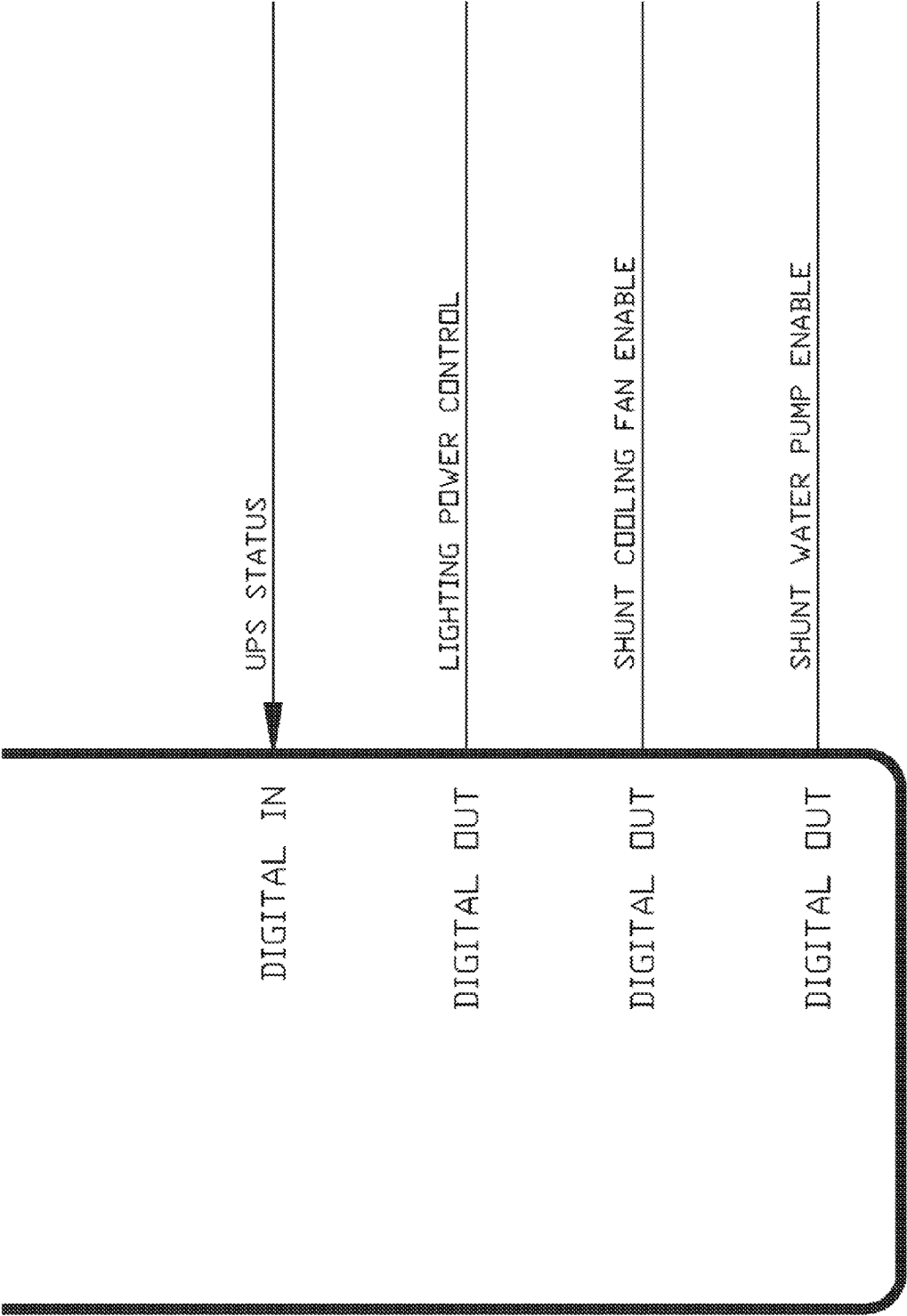


FIG. 12N

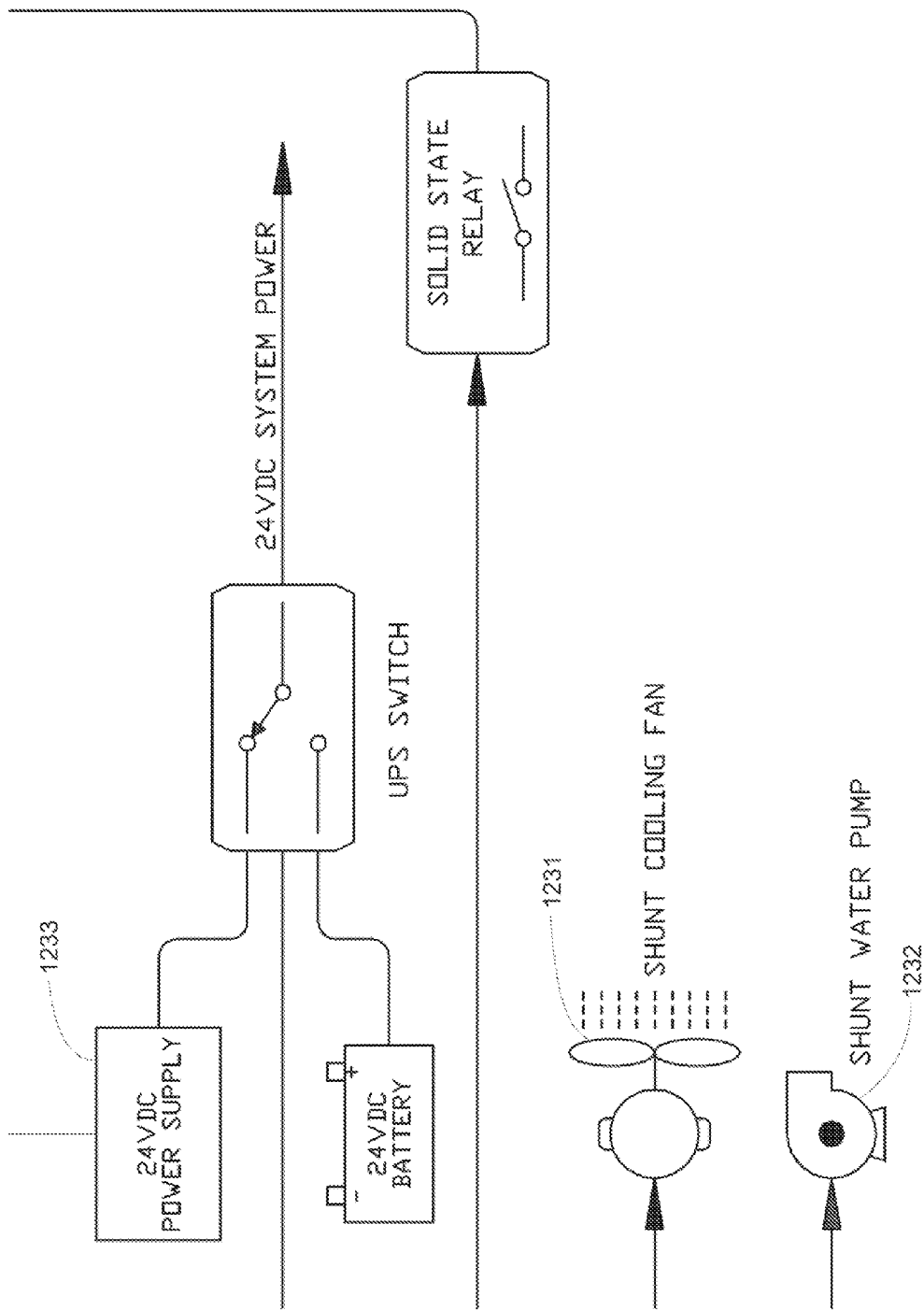


FIG. 120

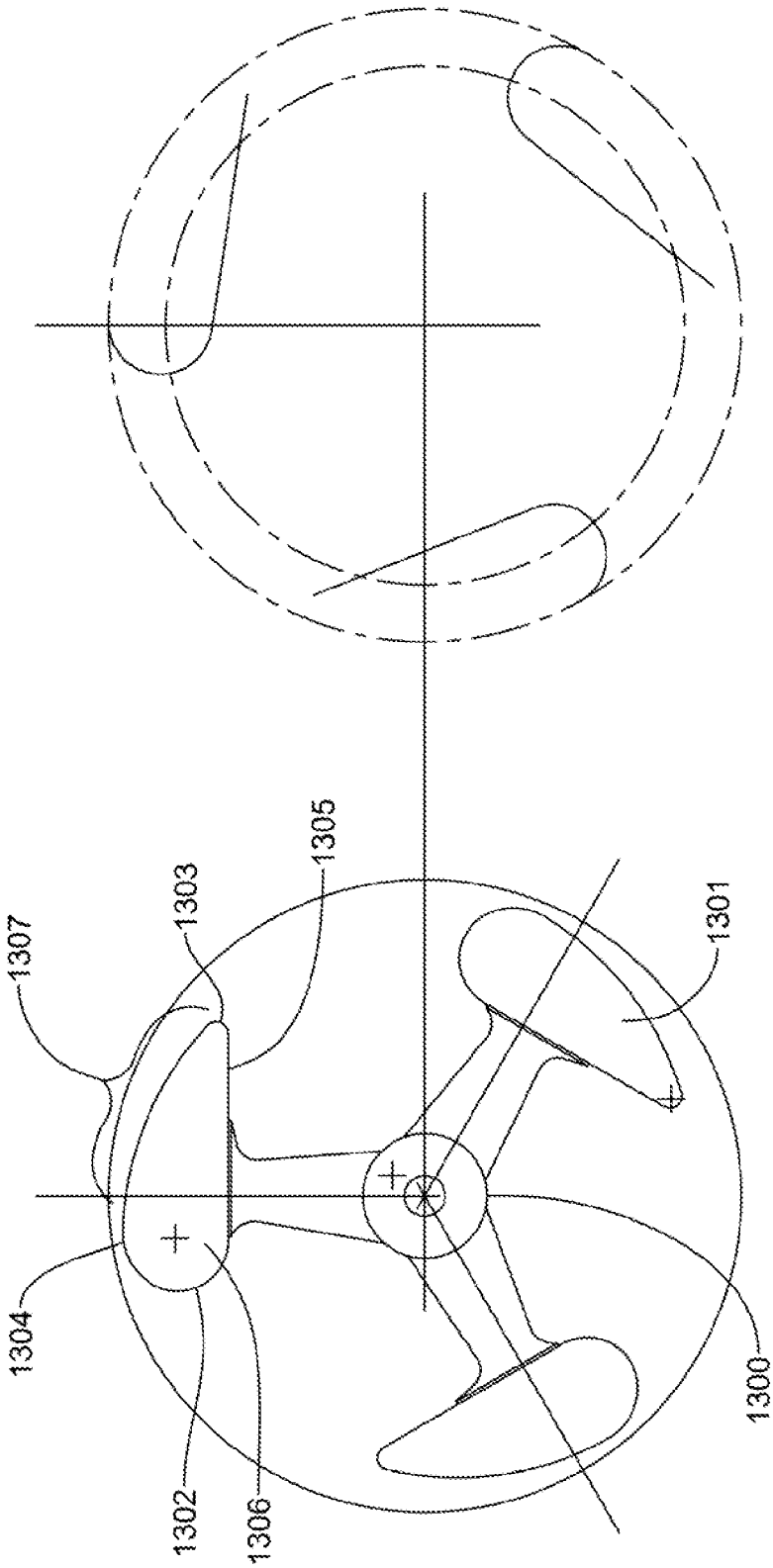


FIG. 13B

FIG. 13A

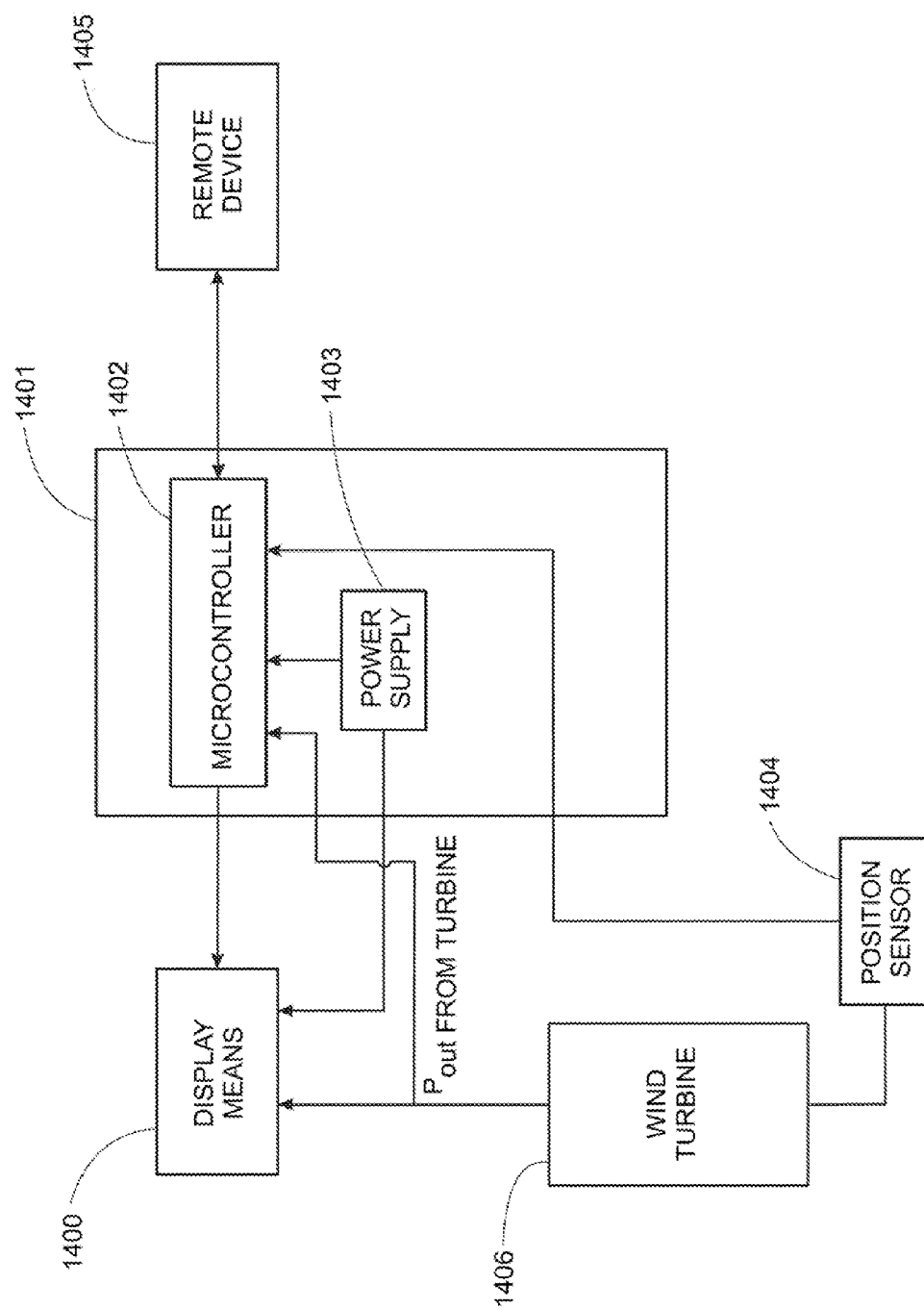


FIG. 14

WIND TURBINE APPARATUS, SYSTEMS AND METHODS

CROSS REFERENCE TO RELATED APPLICATIONS

[0001] The present application is a Non-provisional Application which claims priority from U.S. Provisional Patent Application Ser. No. 61/310,940, filed Mar. 5, 2010 and entitled Inflatable Wind Turbine (Attorney Docket No. 103), which is incorporated herein by reference in its entirety.

TECHNICAL FIELD

[0002] The present disclosure relates to wind turbines and more particularly, to wind turbines and systems and methods for wind turbines.

BACKGROUND INFORMATION

[0004] A wind turbine is a device which converts the energy of wind into electrical energy. This method of generating electrical power may be beneficial to the environment for many reasons, including, but not limited to, that it consumes from a small amount to no fuel and emits from a small amount to no air pollution, unlike many fossil fuel power sources. One type of wind turbine is a horizontal axis wind turbine. These types of turbines typically include a main rotor shaft with large blades and electrical generator at the top of a tower. To turn the blades, the rotor may be pointed into the wind.

SUMMARY

[0005] In accordance with one aspect of the present invention, a wind turbine is disclosed. The wind turbine includes one or more of the embodiments described herein.

[0006] In accordance with one aspect of the present invention, a wind turbine is disclosed. The wind turbine includes a vertical axis inflatable sail.

[0007] In accordance with one aspect of the present invention, a control system for a wind turbine is disclosed.

[0008] In accordance with one aspect of the present invention, a wind turbine is disclosed. The wind turbine includes comprising an inflatable portion comprising one or more blades and a device for rotatably and/or rotatably driving the inflatable portion at a predetermined rate for a predetermined time.

[0009] Some embodiments of this aspect of the invention may include one or more of the following. Wherein the inflatable portion comprising one or more separately inflatable sections. Wherein the wind turbine further includes a display system comprising a plurality of light emitting diodes. Wherein the plurality of light emitting diodes is powered by energy generated by the wind turbine. Wherein the wind turbine further includes a control system configured to control the inflation and deflation of the inflatable portion. Wherein the control system further configured to command the device to rotatably drive the inflatable portion based on wind speed. Wherein the control system further configured to command the device to rotatably drive the inflatable portion based on temperature. Wherein the control system further configured to rotatably drive the inflatable portion based on weather conditions. Wherein the wind turbine further includes a hydraulic brake system wherein the hydraulic brake system is a fail safe brake system.

[0010] In accordance with one aspect of the present invention, a wind turbine system is disclosed. The system includes a wind turbine including an inflatable portion comprising one

or more blades and a device connected to the inflatable portion. The device for rotatably driving the inflatable portion at a predetermined rate for a predetermined time. The system also includes a mobile transportation unit connected to the device.

[0011] Some embodiments of this aspect of the invention may include one or more of the following. Wherein the inflatable portion comprising one or more separately inflatable sections. Wherein the system further includes a display system comprising a plurality of light emitting diodes. Wherein the plurality of light emitting diodes is powered by energy generated by the wind turbine. Wherein the mobile transportation unit comprising one or more batteries and the one or more batteries receive energy input from the wind turbine. Wherein the system further includes a control system configured to control the inflation and deflation of the inflatable portion. Wherein the system further includes a control system configured to command the device to rotatably drive the inflatable portion based on wind speed. Wherein the control system further configured to command the device to rotatably drive the inflatable portion based on temperature. Wherein the control system further configured to command the device to rotatably drive the inflatable portion based on weather conditions. Wherein the system further includes a hydraulic brake system wherein the hydraulic brake system is a fail safe brake system.

[0012] These aspects of the invention are not meant to be exclusive and other features, aspects, and advantages of the present invention will be readily apparent to those of ordinary skill in the art when read in conjunction with the appended claims and accompanying drawings.

BRIEF DESCRIPTION OF THE DRAWINGS

[0013] These and other features and advantages of the present invention will be better understood by reading the following detailed description, taken together with the drawings wherein:

[0014] FIG. 1 is a view of one embodiment of an inflatable vertical axis wind turbine sail;

[0015] FIG. 2 is a view of one embodiment of an inflatable vertical axis wind turbine sail;

[0016] FIG. 3 is a view of one embodiment of an inflatable vertical axis wind turbine sail;

[0017] FIG. 4 is a view of one embodiment of an inflatable vertical axis wind turbine sail;

[0018] FIG. 5 is a view of one embodiment of a transmission;

[0019] FIG. 6 is a cross sectional view of one embodiment of a transmission;

[0020] FIG. 7 is a view of one embodiment of a transmission;

[0021] FIG. 8 is a view of one embodiment of a brake;

[0022] FIG. 9 is a cross sectional view of one embodiment of a transmission;

[0023] FIG. 10 is a view of one embodiment of a transmission on a platform;

[0024] FIG. 11 is a view of one embodiment of a transmission on a platform;

[0025] FIG. 12 is a diagram of one embodiment of an inflatable vertical axis wind turbine and a control system for the inflatable vertical axis wind turbine;

[0026] FIGS. 13A and 13B are views of one embodiment of a vertical axis wind turbine; and

[0027] FIG. 14 is a diagram of one embodiment of a display system.

DETAILED DESCRIPTION OF THE EXEMPLARY EMBODIMENTS

[0028] Various embodiments include a wind turbine system including an inflatable portion which may include an inflatable rotor portion. An inflatable rotor, also referred to as an inflatable sail, imparts many advantages onto the system, which may include, but are not limited to, one or more of the following. The inflatable sail may be inflated and/or deflated using a control system. This makes installation of the system easier than conventional wind turbines, as well, the system may be easily transported and/or relocated. In some embodiments, the inflatable sail may be connected to a platen which may be attached to a motor vehicle and/or movable trailer and/or a moveable vehicle. In some embodiments, the system may be attached to a flat bed portion of a truck which may increase the ease of transport.

[0029] Transporting and/or moving a wind turbine may be advantageous for many reasons, including, but not limited to, the ability to move the wind turbine based on weather patterns and/or predictions. Thus, where a conventional wind turbine is installed in a particular location and relocation is a highly involved process, where the particular location of install experiences low wind and/or inadequate wind for energy generation and/or preferring amount of energy generation, and/or experiences weather that may be harmful to the wind turbine, that wind turbine may fail to meet a predetermined need and/or be harmed by the weather. However, in various embodiments of an inflatable sail wind turbine, the inflatable sail wind turbine, experiencing non-optimal weather conditions, may be moved/relocated to an area with more beneficial weather conditions and/or safer weather conditions.

[0030] Various embodiments of the inflatable sail wind turbine may additionally present advantages in that the sail is tight weight. Thus, the sail may be turned more easily by the wind. As well, the inflatable sail wind turbine may be installed in various locations that a heavier and/or larger conventional wind turbine may not, for example, but not limited to, on the roof of buildings. In some embodiments, the inflatable sail wind turbine may, in addition to an energy generation device, serve as an advertisement and/or billboard device. As discussed in more detail below, in some embodiments, the inflatable sail wind turbine may include one or more display systems which may include graphics and/or text and/or images. In some embodiments, these display systems may include light emitting diodes (LEDs), however, in some embodiments, the display system may include screen printed displays. In some embodiments, the inflatable sail wind turbine may generate sufficient energy to power the display systems. In some embodiments, the inflatable sail may include a graphic and/or text screen printed onto the sail.

[0031] In some embodiments of the inflatable sail wind turbine, the system may determine inflate and deflate commands based on one or more, but not limited to, the following: wind speed, wind direction, temperature, and/or weather predictions. On board anemometer and wind vanes may provide data related to wind speed and wind direction respectively. In some embodiments, temperature may be used to calibrate the anemometer. In various embodiments, inflation of the inflatable sail may be accomplished using a blower, which, in some embodiments, may be an regenerative blower. Pressure sensors may be used by a control system to monitor the air

pressure in the sail and determine whether additional air should be added (inflation) or air should be removed (deflation). In some embodiments, the control system may use predetermined thresholds to determine whether to inflate and/or deflate. Again, the control system may use the weather conditions and/or prediction in the control scheme for determining whether to inflate and/or deflate. In some embodiments, the system includes at least one back pressure regulator. In some embodiments the back pressure regulator may include a preset pressure threshold. In some embodiments, where the pressure exceeds the threshold, the system will vent to atmosphere. This method and system may be used to prevent popping of the inflated sail.

[0032] In some embodiments, the system may include an air compressor. In some embodiments, the system may use an air compressor from a nearby building, for example, from a building in which the inflatable sail wind turbine is installed on the roof.

[0033] In some embodiments, the system may include a hydraulic brake system. The hydraulic brake, in some embodiments, may be powered by a hydraulic power unit. Thus, in some embodiments, the brake system includes a pressurized hydraulic brake. In some embodiments, where power is not longer powering the solenoids in the brake system (which control the calipers, for example), the brake is actuated and thus the turbine stops spinning. In some embodiments, the system includes at least one brake pressure sensor. This brake pressure sensor may send pressure data to the control system and the control system may use this data to determine whether the solenoid is on and whether the system has sufficient pressure to mechanically release the brake. Thus, this design may prevent destruction of the transmission. Thus, in some embodiments, the system includes a fail safe braking system.

[0034] Some embodiments of the system include a measurement of the torque on the transmission using a strain gauge/load cell. The strain gauge/load cell communicates information regarding the torque on the transmission to the controller. Additionally, the system may measure the RPM of the turbine using a resolver on the motor ("motor resolver"). Thus, the motor resolver communicates information relating to RPM to the controller. Thus, the controller receives information regarding torque and RPM and therefore may calculate/computer/measure the power generation of the wind turbine system.

[0035] In some embodiments of the system, the controller determines whether to turn the inflatable sail using power as a function of at least the wind speed. Thus, the wind turbine in some embodiments of the system may turn using both wind energy and power from the system. The amount of power and the speed the controller commands the sail to turn may be determined using one or more inputs, which may include, but is not limited to, wind speed, wind direction, weather patterns, current weather, weather predictions and/or temperature. In some embodiments, the system includes a 24V power supply, however, in various embodiments, the power supply may vary.

[0036] In some embodiments, the energy generated by the inflatable sail wind turbine may be used to power one or more system, which may include, but are not limited to, the display system and/or the wind turbine itself. In some embodiments, the energy generated may be used to cool the system (shunt

cooling system) and/or to heat water by circulating water through the system to dissipate the power the wind turbine is generating.

[0037] In various embodiments, the system includes a communication system which may include a wireless router in some embodiments. The communication system may be used in some embodiment for remote data collection, remote control of the system and/or web cam to determine current weather and/or status of the system. Thus, in some embodiments, the system includes complete remote control and data logging. In some embodiments, the system may be run at an optimal level using inputs which include, but are not limited to, wind speed, temperature, power output of the system by load cell/RPM and/or pure power output, and in some embodiments, using this information, the system may allow the sail to change RPM to attain an optimal/peak power level. In some embodiments, the system may determine the peak power at various wind speeds.

[0038] Various embodiments of the system include a method for self-starting the wind turbine. In some embodiments, using input, for example, wind speed, the control system may determine whether to turn the rotor/sail and/or to allow only the wind to turn the rotor/sail. In some embodiments, the system may use input from at least one pressure sensor to determine whether to power on the system. In various embodiments, the system may use historical data to determine the most optimal conditions for turning the power on to the rotor/sail and/or when to start turning the rotor/sail using the power from the system. The system may turn the rotor/sail at any RPM desirable, therefore, using historical data to determine the optimal time and the optimal RPM may improve and/or optimize the overall power generation of the system.

[0039] In some embodiments, the system may be powered using rechargeable power sources, e.g., batteries. In some embodiment, the rechargeable power sources may be recharged by the energy generated by the wind turbine. In some embodiments, the wind turbine may be electrically connected/in electrical communication with another device/apparatus which may include, but is not limited to, an electric vehicle. In some embodiments, a vehicle and/or trailer in which the wind turbine is connected may include one or more rechargeable batteries which may power one or more device, including, but not limited to, the engine, and these one or more rechargeable batteries may be charged by the energy generated by the inflatable sail wind turbine system. However, in various embodiments, the energy generated by the inflatable sail wind turbine may be used to power any device/system/apparatus.

[0040] Described herein is wind turbine including an inflatable portion. In some embodiments, described herein is a vertical axis wind turbine including an inflatable portion which may be, in some embodiments, an inflatable rotor, which may be termed for purposes of this disclosure, an inflatable sail. Although various embodiments of the sail are disclosed herein, other embodiments are contemplated. The sail may have any number of blades. Further, the sail may include one or more separately inflatable sections. Also, within each of the one of more sections of the sail, the sail may include one or more inflatable bladders or sub-sections. The one or more inflatable bladders may be any shape, size or orientation, including, but not limited to, horizontal, vertical, diagonal, rectangular, round and square.

[0041] As discussed below, the wind turbine includes a control system. Although various embodiments are described

below, these are exemplary embodiments serving as examples of a wind turbine control system as it may be used with respect to an inflatable vertical axis wind turbine. However, in other embodiments, one or more embodiments of one or more components of the control system described herein may be used to control one or more horizontal axis wind turbines. Thus, the scope of the disclosure may not be limited to vertical axis wind turbines.

[0042] As described in the various embodiments below, the exemplary embodiment of the vertical axis wind turbine includes an inflatable sail. In some embodiments, the inflatable may be connected to and/or mounted to and/or attached to a device which rotatably drives the sail at a predetermined rate for a predetermined time. In some embodiments, a timer may be included and in some embodiments, the timer may rotatably drive the sail at a predetermined rate during predetermined hours on predetermined days, e.g., at 10 RPM from 7 am-10 pm Monday through Friday and/or from 9 am-11 pm Saturday and Sunday, however, these are mere examples, any schedule may be preset and/or any predetermined schedule may be used. In other embodiments, the device may rotatably drive the sail at a minimal/threshold rate, and this drive may cease once a control system determines that there is enough wind to drive the sail at or above the minimum/predetermined rate. The minimum rate may be preprogrammed and may be changed using the control system. In some embodiments, during those hours when the sail is not being actively driven at a predetermined rate, the sail may be driven by the wind. And, in some embodiments, during this time, the wind energy may be used to charge a power source that drives the sail. In other embodiments, during those hours when the sail is not being actively driven at a predetermined rate, the sail may be deflated.

[0043] In other embodiments, and in some modes, the sail may be driven at a predetermined rate without regard for wind speed. The drive may be powered by one or more batteries, which may/may not be charged by the wind turbine. In some embodiments, the drive may be powered by electric power available from the grid. In some embodiments, the drive may be powered by a battery that may be charged through any means, including, but not limited to, one or more of the following: wind, solar, grid electric power, and steam.

[0044] In some embodiments, the control system or system controller may wirelessly communicate with a remote machine through one or more modes of wireless communications including, but not limited to, internet and cell. Thus, the wind turbine system controller may be controlled and/or monitored from a remote location. The system controller/control system may be programmed with one or more various algorithms that may respond to one or more inputs, including, but not limited to, one or more of the sensors on the wind turbine, weather reports, weather forecasts, and satellite weather images. The input parameters, the processing of those input parameters and the output commands may, in some embodiments, be changed and thus, the control system may be changed remotely. Additionally, the controls system may be located in a controls center which may control one or more wind turbines. For each wind turbine, the algorithms may be different, or the same, and may be altered or changed either separately or together. In some embodiments, updated controls software may be uploaded to a controls server which controls one or more wind turbines. A centralized system for controlling wind turbines may be beneficial for one or more reasons. In some embodiments, the control system may

include algorithms to detect trends which may be fed into the controls. In some embodiments, the control system may perform a number of start-up tests to determine optimal speed ratios including, but not limited to, optimal tip speed ratios. With respect to sensors and inputs, the control system may receive input signals which may be associated with, but is not limited to, one or more of the following: wind speed, wind direction, wind density/air density, air pressure, and temperature. In some embodiments, the control system may control the RPM of the sail to reach an optimal peak power level. As the peak power level may vary depending on one or more factors, peak power RPM may be determined through start-up testing and may be saved such that the system may recognize the same pattern in the future. In some embodiment, where a pattern is not recognized by the control system, the system may perform a number of tests during that pattern to determine one or more peak performance ratios/values.

[0045] In some embodiments, the sail may include one or more advertisements and/or messages. In some embodiments, two or more wind turbines may be linked together in the same location and synchronized with respect to rotations per minute.

[0046] In some embodiments, the wind turbine may be connected to a building, a geological feature, for example, a hill top and/or a rock formation. However, in some embodiments, the wind turbine may be mobile. As shown and described herein, in some embodiments, the wind turbine may be connected to a truck or a trailer. Thus, the wind turbine may be fully portable. Further, in some embodiments, the energy generated by the wind turbine may be used to charge one or more batteries on the truck or trailer and in turn, these one or more batteries on the truck or trailer may be used to charge another battery, e.g., a car battery. In some embodiments, the truck and/or trailer battery may be charged by the wind turbine.

Inflatable Sail

[0047] Referring to FIG. 1, a perspective view of an inflatable vertical axis wind turbine sail is shown. In one embodiment, the inflatable vertical axis wind turbine sail may be comprised of an inflatable mast **100** and at least two inflatable blades **101** coupled to the mast **100**. Although two (2) inflatable blades may be used, in some embodiments three (3) inflatable blades may be used. However, in other embodiments, more than 3 or less than 2 blades may be used. Additional blades may be desirable in some embodiments due to the increased support the inflatable blades may provide the inflatable mast. In some embodiments, the inflatable vertical axis wind turbine sail may be shaped like a drag-type wind turbine such as, but not limited to, a Savonius rotor. In such embodiments, the mast **100** may be a conical shape. The conically-shaped mast may have an approximate diameter of two (2) feet at the top and five (5) feet at the bottom and a height of approximately twelve (12) feet. Further, in such embodiments, the blades **101** may have a diameter of twelve (12) feet. In another embodiment, the mast **100** and the blades **101** may be made from a fabric such as, but not limited to, polyethylene terephthalate fabric. In some embodiments, other materials may be used to make the mast and blades. In such embodiments, the polyethylene terephthalate fabric may be sewn to divide the blades **101** into a plurality of cells **106**. Further, in such embodiments, a bladder (not shown) may be inserted inside each cell **106** in the blade **101** and inside the mast **100** to hold pressurized gas/air. In some embodiments,

the bladder may be made of urethane. In some embodiments, other materials may be used to make the bladder including, but not limited to, any material that may hold gas/air, which may include, but is not limited to, one or more of the following: PVC/vinyl, Mylar, and/or polyethylene. In some embodiments, bladder material, for example, urethane may be laminated to the sail material, which may include, but is not limited to, nylon.

[0048] In some embodiments, a fitting **105** may be coupled to each bladder to allow air to be pumped into and released from the bladder. In some embodiments, it may be desirable to fill the bladders at the top to promote even filling of the bladder. In some embodiments, it may be desirable to provide foam supports at the top of the bladder to promote even filling of the bladder. Zippers **108** may be placed in the fabric to allow for access to the bladders. In some embodiments, the bladders may be suspended within the cells **106** and mast **100** by tying the bladder to the fabric at the top of the cell **106** and by tying the bladder to the fabric at the top of the mast **100**. In some embodiments, the mast **100** and blades **101** may be made out of nylon fabric that has been sealed to be air tight. The mast **100** may be coupled a platen **104**. In some embodiments, the mast **100** may include nylon webbing **102** sewn into the fabric. In some embodiments, clevis fasteners **103** may be bolted into the platen **104**. The clevis fasteners **103** may then be coupled to the nylon webbing with a pin **107**.

[0049] Referring to FIG. 2, in some embodiments, the inflatable vertical axis wind turbine sail may include inflatable supports **200** configured to form a tripod and at least two inflatable blades, for example, blades **201** coupled to the supports. The tripod may have openings **202** which would allow wind to vent through the center of the sail and duct the wind between the downwind and upwind blades, thereby reducing drag on the upwind blades and improving the efficiency of the inflatable vertical axis wind turbine sail. In one embodiment, the inflatable supports **200** and the blades **201** may be made from a fabric such as, but not limited to, polyethylene terephthalate fabric. In some embodiments, other materials may be used to make the inflatable supports and blades. In such embodiments, the polyethylene terephthalate fabric may be sewn to divide the blades **201** into a plurality of cells **203**. Further, in such embodiments, a bladder (not shown) may be inserted inside each cell **203** in the blade **201** and the supports **200** to hold pressurized air. The bladder may be made of urethane. In some embodiments, other materials may be used to make the bladder. A fitting **204** may be coupled to each bladder to allow air to be pumped into and released from the bladder. In some embodiments, it may be desirable to fill the bladders at the top to promote even filling of the bladder. In some embodiments, it may be desirable to provide foam supports at the top of the bladder to promote even filling of the bladder. Zippers **205** may be placed in the fabric to allow for access to the bladders. However, in other embodiments, various mechanisms other than zippers may be used. The bladders may be suspended within the cells **203** and supports **200** by tying the bladder to the fabric at the top of the cells **203** and by tying the bladder to the fabric at the top of the supports **200**. Alternatively, the supports **200** and blades **201** may be made out of nylon fabric that has been sealed to be air tight. The supports **200** may be coupled a platen **104**.

[0050] Referring to FIG. 3, rigid supports **310** may be attached to the mast **300** to prevent buckling. The rigid supports **310** may be aligned either vertically (shown) or horizontally (not shown) on the mast **300**. Further, in some

embodiments, rigid supports **309** may be attached to the blades **301** to prevent buckling of the blades. The rigid supports **309** may be aligned either vertically (not shown) or horizontally (shown) on the mast **300**. In such embodiments, the mast **300** and the blades **301** may be made from a fabric such as, but not limited to, polyethylene terephthalate fabric. In some embodiments, other materials may be used to make the mast and blades. In such embodiments, the polyethylene terephthalate fabric may be sewn to divide the blades **301** into a plurality of cells **306**. Further, in such embodiments, a bladder (not shown) may be inserted inside each cell **306** in the blade **301** and the mast **300** to hold pressurized air. The bladder may be made of urethane. In some embodiments, other materials may be used to make the bladder. A fitting **305** may be coupled to each bladder to allow air to be pumped into and released from the bladder. In some embodiments, it may be desirable to fill the bladders at the top to promote even filling of the bladder. In some embodiments, it may be desirable to provide foam supports at the top of the bladder to promote even filling of the bladder. Zippers **308** may be placed in the fabric to allow for access to the bladders. The bladders may be suspended within the cells **306** and mast **300** by tying the bladder to the fabric at the top of the cell **306** and by tying the bladder to the fabric at the top of the mast **300**. Alternatively, the mast **300** and blades **301** may be made out of nylon fabric that has been sealed to be air tight. The mast **300** may be coupled a platen **104**. In one embodiment, the mast **300** may have nylon webbing **302** sewn into the fabric. Clevis fasteners **103** may be bolted into the platen **104**. The clevis fasteners **103** may then be coupled to the nylon webbing with a pin **107**.

[0051] Referring to FIG. 4, the inflatable vertical axis wind turbine sail may be comprised of an inflatable mast **400**, a base section **401**, a top section **402**, and at least two inflatable blades **403** coupled to the mast **400**, base section **401** and the top section **402**, wherein the mast **400** connects to the top section **402** at the first end of the mast **400** and connects to the base section **401** at the second end of the mast **400**. The blades may be comprised of inflatable channels **404** with fabric sections **405** extending between the each channel **404**. In one embodiment, the channels **404** in the blades are in fluid communication with the mast **401**, so that air may be pumped into the mast and then flow into the channels. In another embodiment, the mast **400** and the blades **401** may be made from a fabric such as, but not limited to, polyethylene terephthalate fabric. In some embodiments, other materials may be used to make the mast and the blades. In such embodiments, a bladder (not shown) may be inserted inside each channel **404** in the blade **401** and inside the mast **400** to hold pressurized air. The bladder may be made of urethane. In some embodiments, other materials may be used to make the bladder. Alternatively, the mast **400** and blades **401** may be made out of nylon fabric that has been sealed to be air tight. The base section **401** may be coupled a platen (not shown, shown as **104** in FIG. 1).

Transmission

[0052] Referring to FIG. 5, a perspective view of a transmission is shown. In some embodiments, the platen **104** may be coupled to the main shaft **501** of the transmission **502**. In such embodiment, clevis fasteners **103** may be used to attach the inflatable vertical axis wind turbine sail (not shown, shown in FIGS. 1, 2, 3, 4, and as **1200** in FIG. 12) to the platen **104**. In another embodiment, a brake disk **504** may be coupled to the main shaft **501**. Support legs **505** may be attached to the

transmission **502**. Inspection ports **506** may be included on the transmission **502** to allow the internal components of the transmission **502** to be viewed from the outside.

[0053] Referring to FIG. 6, an internal view of the transmission **502** is shown. The main shaft **501** may be coupled to a first stage drive gear **600**. The main shaft **501** may also be rotatably coupled to the transmission case **607**. Bearings **608**, supported by a bearing mount **609**, may be used to allow the main shaft **501** to rotate in the transmission case **607**. The first stage drive gear **600** may be engaged with a pinion gear **601** which may be coupled to the first end of a pinion shaft **602**. A second stage drive gear **603** may be coupled to the second end of the pinion shaft **602**. The pinion shaft **602** may be rotatably coupled to the transmission case using bearings **608**. In one embodiment, the second stage drive gear **603** may be engaged with a pulley **605** coupled to a motor **606**. In some embodiments, it may be desirable for the motor **606** to be a variable-speed, high-efficiency brushless permanent magnet motor such as, but not limited to, an industrial servo motor. In some embodiments, a belt **604** may be used to connect the second stage drive gear **603** to the pulley **605**. As incident winds contacts the blades of the inflatable vertical axis wind turbine sail, the inflatable vertical axis wind turbine sail may rotate about the longitudinal axis of the mast. Since the mast may be coupled to the platen **104** which may be coupled to the main shaft **501**, the main shaft **501** may rotate about its longitudinal axis and drive the first stage drive gear **600**. In some embodiments, it may be desirable for the first stage drive gear **600** to be larger than the pinion gear **601**, in order to convert the slower rotation of the blades into a quicker rotation that may be capable of driving the motor **606** and producing electricity.

[0054] In some embodiments, an oil pump **609** may be coupled to the transmission case **607** via a feedthrough **611** and configured to transmit oil to the bearing **608**. The oil pump **609** may be coupled to fittings (not shown) on the main shaft bearings **608** via tubes (not shown). Oil may be pumped through the tubes and into the transmission **502**. A chain sprocket **610** may be coupled to the oil pump **609** and drives the oil pump **609**. The oil may flow down the bearings **608**, main shaft **501**, and gears and collect at the bottom of the transmission **502**. The oil may then flow through fittings (not shown) in the bottom of the transmission **502** into a collection tank (not shown) where it may be pumped back into the transmission **502**. In further embodiments, a pneumatic rotary joint **612** may be coupled to the transmission case **607** and the main shaft **501**. In another embodiment, a blower (not shown, shown as **1207** in FIG. 12) may be connected to the pneumatic rotary joint **612**. Air may be pumped through the main shaft **501** and into tubes that connect from the main shaft **501** to the fittings on the inflatable vertical axis wind turbine sail and mast so that the inflatable sail may be inflated. In yet another embodiment, valves connected in-line with the blower may be opened to deflate inflatable sail. In yet further embodiments, an electric rotary joint **613** may be coupled to the transmission case **607** and the main shaft **501**. The electric rotary joint may be used to provide electricity to components such as, but not limited to, sensors, motors, strain gauges, or lighting on the inflatable vertical axis wind turbine.

[0055] Referring to FIG. 7, a perspective view of the transmission is shown. In one embodiment, a motor plate **700** may be coupled to the pinion shaft **602**. In such embodiments, the motor plate **700** may be able to rotate about the longitudinal axis of the pinion shaft **602**. The motor **605** may be coupled to

the motor plate **700**. In yet another embodiment, a bracket **701** may be coupled to the transmission **502**. A strain gauge **702** may be coupled between the motor plate **700** and the bracket **701**. As such when the pinion shaft **602** rotates, the motor plate **700** may experience the same torque as the pinion shaft **602**. The torque on the motor plate **700** may cause it to rotate about the longitudinal axis of the pinion shaft **602**. This force may be measured by the strain gauge **702** and may be used to compute the torque produced by the transmission **502**. In some embodiments, this means of measuring the torque may be desirable, since it may be relatively inexpensive, since it may require fewer parts than other means of measuring torque. Moreover, since the strain gauge may be outside the transmission and not coupled directly to the main shaft, the strain gauge may be easily replaced if parts fail. Measuring the torque prior to the motor **606** also eliminates the need to assess the effects of the inefficiencies of the motor in the mechanical power computations for the inflatable vertical axis wind turbine. Note that this does not preclude the use of other methods of measuring torque such as, but not limited to, using strain gauges coupled directly to the main shaft or using pressure sensors coupled between the gears to measure the force between the teeth of the gears.

[0056] Referring to FIG. 8, a bottom view of the transmission is shown. In one embodiment, a bracket **800** may be coupled to the pneumatic rotary joint **612** and electrical rotary joint **613** to keep the pneumatic rotary joint **612** and electrical rotary joint **613** stationary while the main shaft **501** may be rotating. The bracket **800** may be coupled to the pneumatic rotary joint **612** and electrical rotary joint **613** via a threaded rod **801**. The bracket **800** may also be coupled to the transmission casing **507**.

[0057] Referring to FIG. 9, a cross section of the brake disk **504** and main shaft **501** are shown. In other embodiments, a hydraulic caliper brake **900** may be provided to control the speed of the main shaft. The hydraulic caliper brake **900** may be coupled to an air compressor (not shown, shown as **1219** in FIG. 12) and held open or closed by compressed air. However, the hydraulic caliper brake **900** may also be coupled to a hydraulic power unit **1222** (not shown, shown as **1222** in FIG. 12). Therefore, the brake **900** may be actuated by the air compressor **1219** and/or the hydraulic power unit **1222**. In other embodiments, the brake **900** may be actuated by an electronic actuator. A solenoid valve (not shown, shown as **1220** in FIG. 12) may be used to regulate the air pressure from the air compressor. In some embodiments, it may be desirable to have the hydraulic caliper brake **900** configured to be in the closed position when the solenoid valve is closed (or in other words the brake may be held in the open position by the compressed air when the solenoid is opened), so that if power is lost to the solenoid valve when the system is running, the hydraulic caliper brake **900** may engage the brake disk **504** and stop the main shaft **501**. In some embodiments, it may be desirable to have the brake disk **504** and hydraulic caliper brake **900** located on the main shaft **501**. If, for example, the hydraulic caliper brake was located on the motor and the belt connecting the second stages drive gear and the pulley were to fail, then the hydraulic caliper brake would no longer be able to stop the inflatable vertical axis wind turbine sail. By placing the brake disk **504** on the main shaft **501**, the main shaft **501** may be stopped, regardless of whether other components such as gears or belts have failed. Note that this does not limit the use of the hydraulic caliper brake to only the main shaft

and the hydraulic caliper brake may be used at other locations on the transmission or on the motor.

Mobile Transportation

[0058] Referring to FIG. 10, the transmission **502** may be coupled to a platform **1000**. In some embodiments, the platform may be the frame of a vehicle such as, but not limited to, a truck. Alternatively, the platform may be the frame of a trailer. To support and stabilize the platform, outriggers **1001** may be coupled to the **1000** platform. In some embodiments, it may be desirable to have adjustable platform legs **1002** coupled to the outriggers to increase the stability of the platform **1000**. Leg supports **505** on the transmission **502** may be coupled to the platform. Alternatively the leg supports **505** may be coupled to the outriggers **1001**. Referring to FIG. 11, the outriggers **1001** may be directly coupled to the frame **1100** of the platform **1000**.

Control System

[0059] Referring to FIG. 12, an inflatable vertical axis wind turbine and a system for controlling the inflatable vertical axis wind turbine is provided. In one embodiment, the inflatable vertical axis wind turbine **1200** may be rotatably coupled to a transmission **1201**. A load cell **1202** may be coupled to the transmission and configured to measure the torque output of the transmission and send the torque measurement data to the system controller **1203**. The system controller may be a cRIO controller made by National Instrument, Inc. A strain gauge amplifier **1229** may be used to amplify the signal sent from the load cell **1202** to the system controller. The transmission **1201** may also be rotatably coupled to a brushless permanent magnet motor **1204**. As incident winds contact the blades of the inflatable vertical axis wind turbine **1200**, the inflatable vertical axis wind turbine **1200** rotates. Since the inflatable vertical axis wind turbine **1200** may be coupled to the transmission **1201** which in turn may be coupled to the motor, the rotation of the inflatable vertical axis wind turbine **1200** may drive the brushless permanent magnet motor **1204** which produces electricity.

[0060] A pneumatic rotary joint **1205** may be coupled to the transmission **1201**. In another embodiment, a blower **1207** may be connected to the pneumatic rotary joint **1205**. Air may be pumped through the pneumatic rotary joint **1205** and into the inflatable vertical axis wind turbine **1200**. The air may be regulated by inline solenoid valves **1208**, based on pressure readings from a blower pressure sensor **1209** and pressure sensors for the inflatable vertical axis wind turbine **1200**. In one embodiment, the blower **1207** provides air to the blades and the mast of the inflatable vertical axis wind turbine **1200**. The solenoid valves **1208** may be controlled via the system controller **1203** to fill the blades and the mast at different pressures with different solenoid valves **1208** to control air flow into each. In such embodiments, the system controller **1203** may be programmed to fill the mast with air first and then fill the blades. Alternatively, the system controller **1203** may be programmed to fill the mast and the blades simultaneously. In another embodiment, the blades and the mast may be filled to the same pressures. A heater **1211** may be provided to heat the enclosure housing, i.e., the housing for the pneumatics/hydraulics system. The heater **1211**, in some embodiments, heats the solenoids **1208**, **1212** and **1220**, pressure regulators **1213**, **1226** and hydraulic power unit **1222**.

[0061] In yet another embodiment, solenoid valves **1212** may be opened to release air from the inflatable vertical axis wind turbine **1200**. Further, back-pressure regulators **1213** may be used to release the pressure mechanically into the atmosphere when the pressure exceeds a threshold pressure for the regulator. In some embodiments, the blower **1207** may be used to release air from the inflatable vertical axis wind turbine **1200**.

[0062] An anemometer **1214** may be provided to measure wind speed. In yet another embodiment, a wind vane **1215** may be provided to measure the directionality of the wind. In further embodiments, a temperature sensor **1216** may be used to measure the ambient air temperature. The ambient air temperature may be used to compute air density. Since air density affects the calibration of the anemometer **1214**, and power output of the inflatable vertical axis wind turbine **1200**, the temperature measurement may be used to recalibrate anemometer to correct for changes in ambient air temperature.

[0063] In yet further embodiments, an electrical rotary joint **1206** may be coupled to the transmission **1201**. The system controller **1203** may be communicatively coupled to the electrical rotary joint **1206** and fed through the main shaft **1218** to provide power to other electrical systems or components on the vertical axis wind turbine **1200** such as, but not limited to, sensors, motors, strain gauges, or lighting on the inflatable vertical axis wind turbine.

[0064] A hydraulic caliper brake **1217** may be provided to control the speed of the main shaft **1218**. The hydraulic caliper brake **1217** may be coupled to an air compressor **1219** and held open by compressed air. In one embodiment, a portable air compressor may be used. Alternatively, a stationary air compressor located in a building may be used. A solenoid valve **1220** may be used to regulate the air pressure from the air compressor. In some embodiments, it may be desirable to have the hydraulic caliper brake **1217** configured to be in the closed position when the solenoid valve **1220** is closed (or in other words the brake may be held in the open position by the compressed air when the solenoid is opened), so that if power is lost to the solenoid valve when the system is running, the hydraulic caliper brake **1217** may engage the brake disk **1221** and stop the main shaft **1218**.

[0065] A hydraulic power unit **1222** may be used to increase the pressure of the air sent from the air compressor to the hydraulic caliper brake **1217**. Pressure sensors **1223**, **1224** may be used to monitor the pressure of the air from the air compressor and the hydraulic pressure in the hydraulic power unit. A shut-off valve/quick-exhaust valve **1225** may be included to cut off air to the hydraulic caliper brake **1217** in the event the solenoid fails and/or for servicing the wind turbine **1200**. A filter regulator **1226** may be provided to remove contaminants from the compressed air.

[0066] In some embodiments, it may be desirable to have the brake disc **1221** and hydraulic caliper brake **1217** located on the main shaft **1218**. If, for example, the hydraulic caliper brake **1217** was located on the motor and the connection between the transmission and motor failed, then the hydraulic caliper brake **1217** would no longer be able to stop the main shaft **1218**. By placing the brake disc **1221** on the main shaft **1218**, the system may be stopped regardless of whether the connection between the transmission **1201** and motor **1204** failed. Note that this does not limit the use of the hydraulic

caliper brake to only the main shaft and the hydraulic caliper brake may be used at other locations on the transmission or on the motor.

[0067] A motor drive **1227** may be provided. The motor drive **1227**, in some embodiments, may be a four quadrant servo-amplifier. In some embodiments, the motor drive **1227** controls power to and from the DC bus of the system controller **1203**. The motor drive may use a standard RS232 signal to communicate with the DC bus of the system controller **1203**. However, in some embodiments, the motor drive **1227** may use an analog/digital signal to communicate with the DC bus of the system controller **1203**. A resolver **1236** may be rotatably coupled to the motor **1204** and communicatively coupled to the motor drive **1227**. The resolver **1236** may measure the position of the motor **1204** and transmit this data to the motor drive **1227**. Using the rotational speed of the motor and the torque measurements from the load gauge **1202**, the overall power generation of the system may be calculated. A shunt resistor **1228** may be connected to the motor drive **1227** to convert the output power from the motor **1204** and regulate the DC bus voltage. In some embodiments, the shunt resistor may be located in a water tank for maintaining the temperature of the shunt resistor **1228**, which, in some embodiments, may provide cooling to the shunt resistor **1228**, and the water may be circulated by a shunt water pump **1232**. A shunt cooling fan **1231** such as, but not limited to a radiator may be provided to cool the shunt resistor **1228**. Current sensors **1230** may be used to measure voltage and current in the shunt.

[0068] In some embodiments, additional power that is not dissipated by the shunt resistor may be transmitted through the high voltage DC bus to power other system components **1233** and the shunt cooling system **1234**. Moreover, additional power that is not dissipated by the shunt resistor **1228** may be transmitted through the high voltage DC bus to a battery charger **1235**. Using an inverter (not shown) power may be used to charge batteries such as, but not limited to, a vehicle battery. Alternatively, the inverter may be used to plug the system into an electrical power grid, so the system may supply power to the grid or to a home.

[0069] The system controller **1203** may be programmed to open the solenoid valves **1212** to deflate the inflatable vertical axis wind turbine **1201** at certain wind speeds, in order to prevent buckling. The system controller **1203** may also be programmed to turn on the blower **1207** and open the solenoid valves **1208** to inflate the inflatable vertical axis wind turbine **1200** when a particular minimum air speed, necessary to produce power, may be obtained. Moreover, the system controller may be programmed to only operate when a certain user-defined threshold of power may be produced. The system controller may also be programmed to operate the motor (and draw power from the system) and rotate the inflatable vertical axis wind turbine **1200** when there is no wind or not enough wind to generate power for the system.

[0070] The system controller **1203** may also be programmed to record and store data such as, but is not limited to, ambient air temperature, wind speed, wind directionality, blower pressure, blades and mast pressure, air compressor pressure, brake pressure, torque generated by the transmission, shunt current and voltage, motor speed, current and voltage sent to the battery charger, shunt cooling system, and other system components. Based on this data, optimal power outputs may be determined for given weather conditions. The system controller **1203** may store these optimal weather conditions and be programmed to inflate inflatable vertical axis

wind turbine **1200** and release the hydraulic caliper brake **1217** when the optimal conditions are met. The system controller **1203** may also be programmed with heuristic algorithms and attempt to autonomously operate the motor **1204** at various speeds and rotate the inflatable vertical axis wind turbine **1200** and measure the power output for the system at given speeds in order to find the optimal wind turbine speed for producing the maximum power in a given set of weather conditions.

[0071] In some embodiment, wireless communication may be communicatively coupled to the system controller **1203**. In some embodiments, a wireless router (not shown) may be communicatively coupled to the system controller **1203**. However, in other embodiments, any type of wireless communications may be used. For illustrative purposes only, the wireless router embodiment is described herein. The wireless router may transmit data recorded by the system controller to a remote server or computer. In some embodiments, the wireless communications may be between any machine and the system controller, including, but not limited to, a smart phone, a laptop, a net book, a cell phone, a PDA, etc. In some embodiments, the system controller **1203** may be wirelessly communicatively coupled to a remote server and/a remote control center. However, for illustrative purposes only, a remote computer is described. Some of the data that may be collected and transmitted include, but is not limited to, ambient air temperature, wind speed, wind directionality, blower pressure, blades and mast pressure, air compressor pressure, brake pressure, torque generated by the transmission, shunt current and voltage, motor speed, current and voltage sent to the battery charger, shunt cooling system, and other system components. Moreover, the wireless router may be coupled to a camera and transmit images and video from the camera to a remote computer. Recorded data such as, but not limited to, the voltage and the current in the shunt resistor, may be recorded and plotted against wind speed and weather conditions.

[0072] From the remote computer, a user may input commands to the system controller including, but not limited to speed commands for the motor, commands to engage or disengage the hydraulic caliper brake, and commands to inflate or deflate the inflatable vertical axis wind turbine. The wireless router may receive information such as, but not limited to, weather advisories and the system controller may be programmed to inflate or deflate the inflatable vertical axis wind turbine or engage or disengage the hydraulic caliper brake based on the information.

Display System

[0073] Various embodiments of the wind turbine apparatus, systems and methods described herein may include a mechanism for generating an image on the blades of a wind turbine and/or a display system. The system may utilize the persistence of vision to generate images as the wind turbine rotates. As the blades of the wind turbine rotate, the display means, coupled to the blades, may be turned on or off in synchronization with the rotation of the blades. As the blade passes the field of view of an observer, the display means may be on or off and the observer may see the image displayed. The image produced by the blade may persist for a period of time after the image is shown. As the next blade rotates and passes by the field of view of the observer, another image may be displayed, and the persistence of vision allows the images to appear continuous. The images generated may include, but

are not limited to, pictures, text, symbols, numbers, the date and time, weather forecasts, traffic information, and advertising.

[0074] The system may include a plurality of display means, such as, but not limited to, a plurality of light-emitting diodes (LEDs), coupled to the blades or airfoils of the turbine. Moreover, other types of display means may be used, alone or in combination with other display means, including, but not limited to, cathode-ray tubes, organic light-emitting diodes (OLEDs), liquid crystal displays (LCDs), plasma displays, or any other display means that produce visible light. In various embodiments, the display means may vary in size and color and different combinations of display means may be used. In addition, the system may be configured to have any number of displays arranged in any number of rows or columns necessary to display an image.

[0075] A control system may be used to control the display means. In some embodiments the control system may include, but is not limited to, a microcontroller communicatively coupled to the display means and a power supply which may power the display means and the control system. The microcontroller may include, but is not limited to, a processor, a memory block, and an I/O block. The connection between the microcontroller and the display means may be a wired or wireless connection in various embodiments. In certain embodiments, the control system and display means may be powered by the energy produced by the wind turbine. With respect to the microcontroller, an algorithm may be programmed into the microcontroller to control and adjust when the display means turn on and off, so as to produce an image based on persistence of vision. The algorithm may also vary when the display means are turned on and off based on the rotation of the turbine, to ensure that the image is visible regardless of the speed of the wind turbine. The control system may further include a positioning sensor that detects the position of the wind turbine as it rotates, so as to measure the speed of the rotation. The positioning sensor may then transmit the position and speed data to the microcontroller, to be used in determining when to turn the display means on and off.

[0076] Further, the control system may vary the intensity and brightness of the displays based on the time of day to increase the visibility of the image. The control system may change the images over time based on a pre-determined time-frame (i.e. Image A is displayed for 30 minute and then Image B is displayed for 30 minutes) and/or based on the time of the day or the day of the week (i.e. Image A is displayed between 12:00 AM to 11:59 AM and Image B is displayed from 12:00 PM to 11:59 PM).

[0077] Although an image may be generated when the wind turbine is rotating, in alternative embodiments, an image may be generated when the wind turbine is not rotating. In such embodiments, the display means may generate a stationary image or the image may “move” along the displays (i.e. text may scroll across the display means).

[0078] In various embodiments, the microcontroller may be communicatively coupled to a remote device such as, but not limited to, a remote computer, mobile device, and/or router. A user may use the remote device to transmit commands to the microcontroller, such as but not limited to, commands to changing the image shown, and/or commands to turn off the display means. Further, the remote device may receive data from the microcontroller.

[0079] Persistence of vision refers to a visual phenomenon that is responsible for the continuity of rapidly presented visual images. When an image is presented to the human eye, there is a brief retinal persistence of the first image. If a second image is shown rapidly after the first, the brain is unaware of the momentary lapse between images due to the persistence of the first image. The persistence of the first image fills in the momentary lapse between the first and second image, thereby making the images appear continuous. This phenomenon is what allows for the images in animation, movies, and television to seem continuous. Persistence of vision may also allow for images to be displayed on rotating objects.

[0080] Referring now to FIG. 14, a method, system and apparatus of generating an image on the blades of a wind turbine is shown. The system may include, in some embodiments, at least one/a plurality of display means/mechanisms 1400. In one embodiment, the display means 1400 includes at least one/a plurality of light-emitting diodes (LEDs) coupled to the blades of a wind turbine. Moreover, other types of display means may be used, alone or in combination, including, but not limited, cathode-ray tubes, organic light-emitting diodes (OLEDs), liquid crystal displays (LCDs), and/or plasma displays. In addition, in various embodiments, the system may be configured to have any number of displays arranged in any number of rows or columns necessary to display an image.

[0081] A control system 1401 may also be used to control the sequencing of the display means 1400. The control system 1401 may include a microcontroller 1402 for sequencing the display means 1400, and power supply 1403 for the display means and microcontroller. The microcontroller may further include a processor, a memory block, and an I/O block. In some embodiments, the control system 1401 and display means 1400 may be powered by the energy produced by the wind turbine 1406. In some embodiments, the means of generating an image on the blades of a wind turbine may be integrated into other control systems such as, but not limited to, the control system described herein. In such embodiments, the display means 1400 may be communicatively coupled to and controlled by the system controller, for example, in some embodiments, the controller may be as shown as 1203 in FIG. 12. Further, in some embodiments, the display means may be powered by a high voltage DC bus, shown as 1233 in FIG. 12 or it may be powered by a separate power supply. In some embodiments, the methods/mechanisms/means of generating an image on the blades of a wind turbine is not limited to being used in conjunction with the vertical wind turbines described herein and may be used on any vertical or horizontal wind turbine.

[0082] As the blades rotate, the display means may be turned on or off in synchronization with the rotation of the blades, so as to form an image based on the persistence of vision. As a blade passes the field of view of an observer, the display means may be on or off, depending on the image displayed. The image produced by the blade may persist for a period of time. As the next blade rotates and passes by the field of view of the observer, another image may be displayed, and the persistence of vision allows the images to appear continuous. In some embodiments, the image produced may be any one or more images, including, but not limited to, images of text, pictures, and/or symbols. Further, the microcontroller may be programmed into the control system to adjust when the display means turn on and off, so as to produce an image based on persistence of vision. The algo-

rithm may also vary when the display means are turned on and off based on the rotational speed of the turbine, to ensure that the image is visible regardless of the speed of the wind turbine. The microcontroller may be used to change the image of text, picture, and symbols based on user input or the microcontroller may be pre-programmed to automatically adjust or change the image. Although the system described may be used to generate images while the turbine is rotating, in some embodiments, an image may be generated also and/or when the wind turbine is stationary. In such embodiments, the display means may generate a stationary image or the image may "move" along the displays (i.e. text may scroll across the display means).

[0083] In some embodiments, the system may further include a positioning sensor 1404 that detects the position of the wind turbine as it rotates, so as to measure the speed of the rotation. The positioning sensor may then transmit the position and speed data to the microcontroller, to be used in determining when to turn the display means on and off. In some embodiments, the microcontroller may be communicatively coupled to a remote device 1405 such as, but not limited to a remote computer, mobile device, or router. In some embodiments, the remote device may transmit commands to the microcontroller and may receive data from the microcontroller such as, but not limited to, the speed of the wind turbine.

Self-Starting System

[0084] In various embodiments, a self-starting vertical axis wind turbine may be used. The system may include a support and airfoils coupled to the support. The wind turbine may have any number of airfoils. The airfoils may be configured to have a cavity between the upper and lower camber which is in fluid communication with the wind, via one or more apertures on the lower or upper camber. Wind may impinge the cavity via the apertures and directly impart a force on the airfoil, thereby rotating the airfoil about the support. Furthermore, the airfoil may also function like a lift-type blade and generate lift as the airfoil rotates about the support. As such, the turbine is capable of self-starting without the use of a motor. It should be noted that the cavity and apertures may be any shape, size or orientation. Further, the shape, size or orientation of the cavity and apertures may vary in various embodiments depending, for example, but not limited to, the desired aerodynamic properties of the airfoil. Moreover, the cavity and apertures may be configured to minimize the turbulent wake behind the trailing edge of the airfoil as it rotates about the support. Note that in some embodiments, the wind turbine may also use a motor, machine, or other source to self-start.

[0085] With respect to the airfoils, in various embodiments, the airfoils may also have any shape, size, configuration, or orientation including, but not limited to, asymmetrical, symmetrical, or flat-bottomed configurations. The airfoils may be constructed from a material such as, but not limited, to aluminum or fiberglass. In some embodiments, other materials may be used to make the turbine including, but not limited to, any material that may sustain exposure to wind. Further, the airfoils may be constructed from multiple sections that are coupled together. In other embodiments, parts of or the entirety of the rotor may be inflatable.

Lift-Type Rotor

[0086] There are two types of vertical axis wind turbines: lift-type and drag-type. Lift-type rotors typically have at least

two airfoils coupled to a support. Generally, an airfoil is designed such that the air that passes along the upper camber is at a greater speed than the lower camber. As a result, a pressure differential is created across the airfoil, thereby generating upward lift. In a lift-type wind turbine, as the airfoils rotate about the support, the pressure differential created across the airfoil will generate lift which will cause the airfoils to rotate about the support. However, the rotor must be moving in order to generate lift. As a consequence, if the rotor is stationary, it cannot generate lift and the lift-type rotor cannot self-start regardless of how high the wind speed is.

[0087] In some embodiments, one method of starting the rotor is to use an external force from a motor or other source to start the rotor, at which point the airfoils will rotate and generate lift and the rotor may then maintain the rotation without any other external forces being applied from a motor. Another method of self-starting a lift-type rotor is to use blades that can pivot. The blades may be pivoted so that they are perpendicular to the wind, in order to generate drag and start the turbine. However, there are some disadvantages to this approach. Typically, the blade pivot mechanism is complex and cumbersome to assemble and increases the weight on the armature or frame coupling the blade to the central support. Furthermore, sensors may be needed to control the pivot of the blades as it rotates, which can increase the cost and complexity of the system. Some examples of lift-type rotors include Darrieus rotors, and Giromills.

[0088] In contrast to lift-type rotors, drag-type rotors are able to self-start. In drag-type rotors, at least two blades are coupled to a support. The blades are typically flat or curved blades. Incoming wind may impinge the blades of the rotor and directly impart a force on the blades thereby rotating the blades about the support. As such, drag-type rotors can be self-starting without the use of a motor. Described below is a lift-type vertical axis wind turbine that may self-start without the need for an external force from a motor or other machine to start the rotor.

[0089] Referring to FIGS. 13A-13B, views of one embodiment of a vertical axis wind turbine is shown. In one embodiment, the vertical axis wind turbine may be comprised support **1300** and at least two airfoils **1301** coupled to the support **1300**, wherein each airfoil has a leading edge **1302**, a trailing edge **1303**, an upper camber **1304**, and a lower camber **1305**. The lower camber may run continuously from the leading edge to the trailing edge and the upper camber may run from the leading edge and extend toward, but not connect to, the trailing edge. In some embodiments, the upper camber may run continuously from the leading edge to the trailing edge and the lower camber may run from the leading edge and extend toward, but not connect to, the trailing edge. In some embodiments, the lower camber may run continuously from the leading edge to the trailing edge and the upper camber may run continuously from the leading edge to the trailing edge.

[0090] In some embodiments, a cavity **1306** and may be formed between the upper and lower camber which is in fluid communication with the wind, via one or more apertures **1307** on the lower or upper camber. When the apertures **1307** are facing towards the wind (i.e. as the airfoil is facing leeward), the wind may directly impinge the cavity **1306** via the apertures **1307** on the airfoil and directly impart a force on the cavity and rotate the airfoil. Furthermore, the airfoil may also function like a lift-type blade and generate lift when the airfoil

rotates about the support. In some embodiments, the wind turbine may also use motor, machine, or other source to self-start.

[0091] In some embodiments, the support and airfoils may be completely rigid structures. In other embodiments, the support and airfoil may be completely inflatable. In some embodiments, the support and airfoil may be partially inflatable and partially rigid. Moreover, in various embodiments, the airfoil may also have any shape, size, configuration, or orientation including, but not limited, asymmetrical, symmetrical, and/or flat-bottomed configurations. In various embodiments, the airfoil may be constructed from a material such as, but not limited to, aluminum and/or fiberglass. In addition, the airfoils may include at least one, and in some embodiments, a plurality, of subsections that may be coupled together via various methods such as, but not limited to, welding.

[0092] Although the transmission, mobile transportation unit, display system, and control system described herein may be described in conjunction with the inflatable vertical wind turbine, it should be noted that the self-starting vertical wind turbine described herein, or any vertical wind turbine, may be also used in conjunction with any or all of the components described herein, including, but not limited to, the transmission, mobile transportation unit, display system, and/or control system. By way of example, and not by way of limitation, in some embodiments, the support **1300** may be coupled to the platen (shown as **104** in FIG. 1) which may be coupled to the transmission (shown as **1201** on FIG. 12). The control system (as shown in FIG. 12) in some embodiments may be used to control the speed of the wind turbine.

[0093] While the principles of the invention have been described herein, it is to be understood by those skilled in the art that this description is made only by way of example and not as a limitation as to the scope of the invention. Other embodiments are contemplated within the scope of the present invention in addition to the exemplary embodiments shown and described herein. Modifications and substitutions by one of ordinary skill in the art are considered to be within the scope of the present invention.

What is claimed is:

1. A wind turbine comprising:
 - an inflatable portion comprising one or more blades; and
 - a device for rotatably driving the inflatable portion at a predetermined rate for a predetermined time.
2. The wind turbine of claim 1 wherein the inflatable portion comprising one or more separately inflatable sections
3. The wind turbine of claim 1 further comprising a display system comprising a plurality of light emitting diodes.
4. The wind turbine of claim 3 wherein the plurality of light emitting diodes is powered by energy generated by the wind turbine.
5. The wind turbine of claim 1 further comprising a control system configured to control the inflation and deflation of the inflatable portion.
6. The wind turbine of claim 5 wherein the control system further configured to command the device to rotatably drive the inflatable portion based on wind speed.
7. The wind turbine of claim 6 wherein the control system further configured to command the device to rotatably drive the inflatable portion based on temperature.
8. The wind turbine of claim 5 wherein the control system further configured to rotatably drive the inflatable portion based on weather conditions.

9. The wind turbine of claim 1, the device further comprising a hydraulic brake system wherein the hydraulic brake system is a fail safe brake system.

10. A wind turbine system comprising:

a wind turbine comprising:

an inflatable portion comprising one or more blades; and
a device connected to the inflatable portion, wherein the device fir rotatably driving the inflatable portion at a predetermined rate for a predetermined time; and

a mobile transportation unit connected to the device.

11. The system of claim 10 wherein the inflatable portion comprising and one or more separately inflatable sections

12. The system of claim 10 further comprising a display system comprising a plurality of light emitting diodes.

13. The system of claim 12 wherein the plurality of light emitting diodes is powered by energy generated by the wind turbine.

14. The system of claim 10 wherein the mobile transportation unit comprising one or more batteries and the one or more batteries receive energy input from the wind turbine.

15. The system of claim 10 further comprising a control system configured to control the inflation and deflation of the inflatable portion.

16. The system of claim 10 wherein the control system further configured to command the device to rotatably drive the inflatable portion based on wind speed.

17. The system of claim 16 wherein the control system configured to command the device to rotatably drive the inflatable portion based on temperature.

18. The system of claim 17 wherein the control system further configured to command the device to rotatably drive the inflatable portion based on weather conditions.

19. The system of claim 10 further comprising a hydraulic brake system wherein the hydraulic brake system is a fail safe brake system.

* * * * *